

PN8056

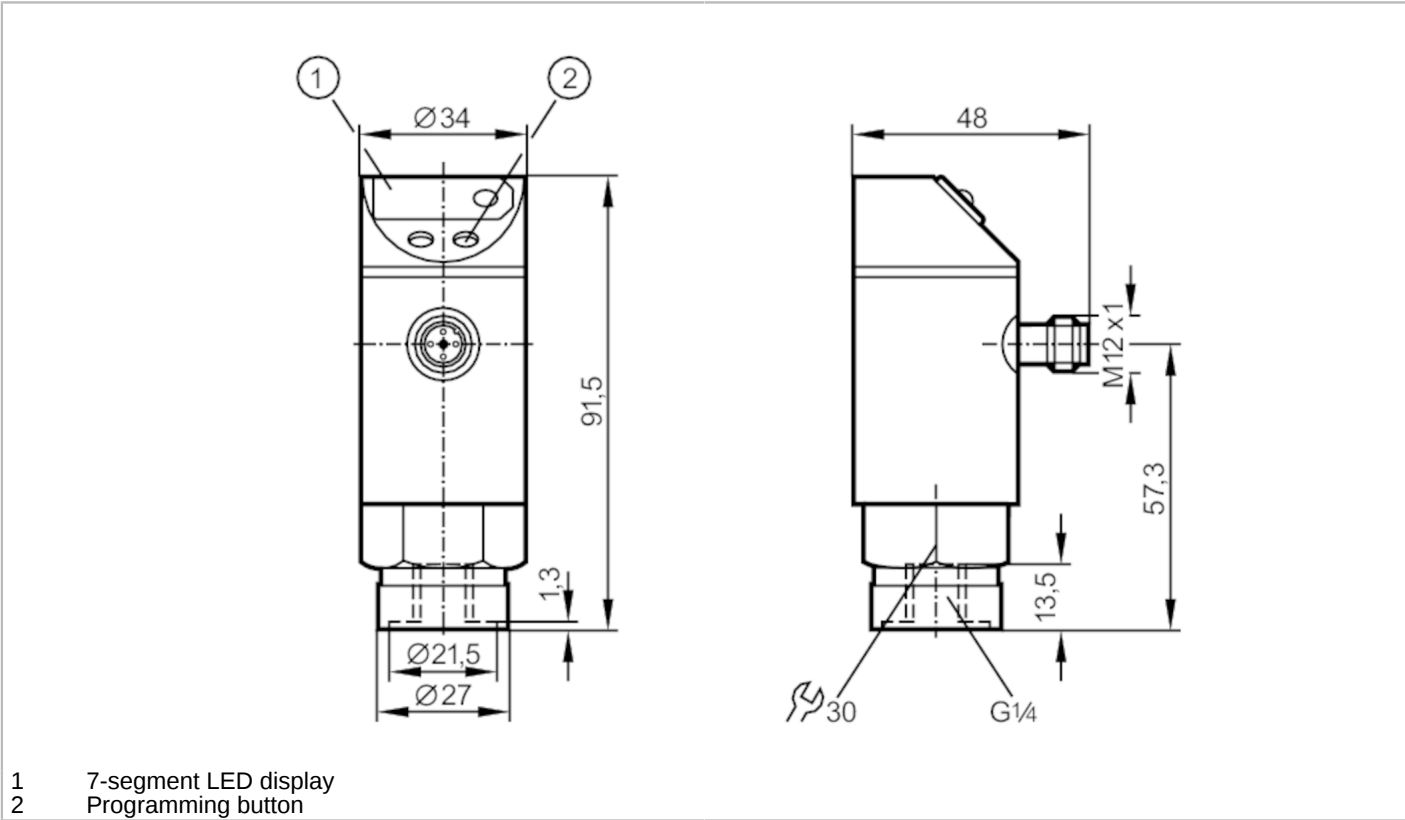


Pressure sensor with display

PN-2,5-RDR14-KFPKG/US/ IV

Article no longer available - archive entry

Alternative articles: PE3006
When selecting an alternative article and accessories please note that technical data may differ!



Product characteristics		
Number of inputs and outputs		Number of digital outputs: 1; Number of analog outputs: 1
Measuring range [bar]		
Process connection		
		threaded connection G 1/4 Internal thread
Application		
Application		for industrial applications
Media		liquids and gases
Medium temperature [°C]		-25...80
Min. bursting pressure [bar]		50
Pressure rating [bar]		20
Electrical data		
Operating voltage [V]		20...30 DC
Current consumption [mA]		< 60
Reverse polarity protection		yes
Power-on delay time [s]		0.2
Integrated watchdog		yes



Pressure sensor with display

PN-2,5-RDR14-KFPKG/US/ IV

Inputs / outputs									
Number of inputs and outputs		Number of digital outputs: 1; Number of analog outputs: 1							
Outputs									
Total number of outputs		2							
Output signal		switching signal; analog signal; (configurable)							
Electrical design		PNP							
Number of digital outputs		1							
Max. voltage drop switching output DC [V]		2							
Permanent current rating of switching output DC [mA]		250							
Number of analog outputs		1							
Analog current output [mA]		4...20							
Max. load [Ω]		500							
Short-circuit protection		yes							
Type of short-circuit protection		yes (non-latching)							
Overload protection		yes							
Measuring/setting range									
Measuring range [bar]		0...2.5							
Set point SP [bar]		0.125...2.5							
Reset point rP [bar]		0.075...2.45							
In steps of [bar]		0.025							
Accuracy / deviations									
Repeatability [% of the final value]		< ± 0,25; (with temperature fluctuations < 10 K)							
Characteristics deviation [% of the final value]		< ± 2,0							
Temperature drift per 10 K		< ± 0.3							
Reaction times									
Switching frequency for a given set response time of one output		Response[ms] time (dAP)	15	20	30	50	90	170	330
		Switching [Hz] frequency	50	35	30	20	15	9	5
Response time [ms]		at rectangular pressure characteristic; Set point (SPx) = 70 %; Reset point (rPx) = 30 %							
Delay time programmable dS, dr [s]		0, 0,2, 0,4,...3							
Software / programming									
Adjustment of the switch point		Programming button							
Operating conditions									
Ambient temperature [°C]		-25...80							
Storage temperature [°C]		-40...100							
Protection		IP 65							

PN8056



Pressure sensor with display

PN-2,5-RDR14-KFPKG/US/ IV

Tests / approvals		
EMC	IEC 801/2 ESD	4 kV CD / 8 kV AD
	IEC 801/3 HF	10 V/m
	IEC 801/4 Burst	2 kV
Shock resistance	DIN IEC 68-2-27	50 g (11 ms)
Vibration resistance	DIN IEC 68-2-6	20 g (10...2000 Hz)
Mechanical data		
Material	stainless steel (1.4404 / 316L); PBT; PC; NBR; EPDM/X; FKM; PTFE	
Materials (wetted parts)	stainless steel (1.4571/316Ti); ceramics; FKM	
Min. pressure cycles	100 million	
Process connection	threaded connection G 1/4 Internal thread	
Displays / operating elements		
Display	Switching status	LED, red
	Function display	7-segment LED display
	Measured values	7-segment LED display
Remarks		
Pack quantity	1 pcs.	

Electrical connection

Connector: 1 x M12; coding: A

