

# PN8050

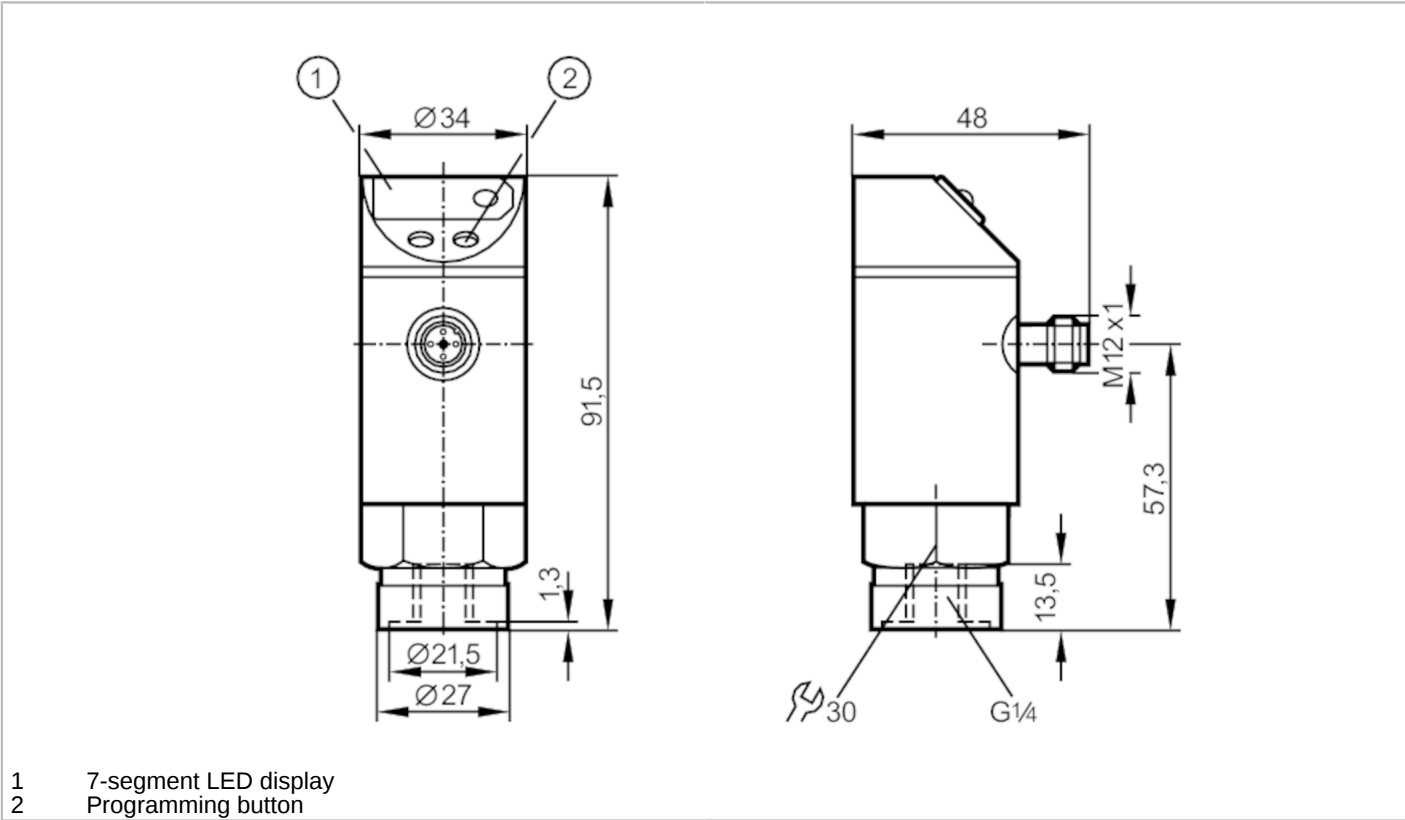


## Pressure sensor with display

PN-400-SDR14-KFPKG/US/ IV

Article no longer available - archive entry

Alternative articles: PE3000  
When selecting an alternative article and accessories please note that technical data may differ!



Product characteristics	
Number of inputs and outputs	Number of digital outputs: 1; Number of analog outputs: 1
Measuring range [bar]	0...400
Process connection	threaded connection G 1/4 Internal thread
Application	
Application	for industrial applications
Media	liquids and gases
Conditionally suitable for	For gaseous media the application is limited to max. 25 bar.
Medium temperature [°C]	-25...80
Min. bursting pressure [bar]	1000
Pressure rating [bar]	600
Type of pressure	relative pressure
Electrical data	
Operating voltage [V]	20...30 DC
Current consumption [mA]	< 60
Reverse polarity protection	yes
Power-on delay time [s]	0.2



## Pressure sensor with display

PN-400-SDR14-KFPKG/US/ /V

Integrated watchdog	yes
<b>Inputs / outputs</b>	
Number of inputs and outputs	Number of digital outputs: 1; Number of analog outputs: 1
<b>Outputs</b>	
Total number of outputs	2
Output signal	switching signal; analog signal; (configurable)
Electrical design	PNP
Number of digital outputs	1
Max. voltage drop switching output DC [V]	2
Permanent current rating of switching output DC [mA]	250
Number of analog outputs	1
Analog current output [mA]	4...20
Max. load [Ω]	500
Short-circuit protection	yes
Type of short-circuit protection	yes (non-latching)
Overload protection	yes
<b>Measuring/setting range</b>	
Measuring range [bar]	0...400
Set point SP [bar]	20...400
Reset point rP [bar]	12...392
In steps of [bar]	4
<b>Accuracy / deviations</b>	
Repeatability [% of the final value]	< ± 0,25; (with temperature fluctuations < 10 K)
Characteristics deviation [% of the final value]	< ± 2,0
Temperature drift per 10 K	< ± 0.3
<b>Reaction times</b>	
Switching frequency for a given set response time of one output	Response[ms] time (dAP)
	15 20 30 50 90 170 330
Response time [ms]	Switching [Hz] frequency
	50 35 30 20 15 9 5
Response time [ms]	at rectangular pressure characteristic; Set point (SPx) = 70 %; Reset point (rPx) = 30 %
Delay time programmable dS, dr [s]	0, 0,2, 0,4,...3
<b>Software / programming</b>	
Adjustment of the switch point	Programming button
<b>Operating conditions</b>	
Ambient temperature [°C]	-25...80
Storage temperature [°C]	-40...100
Protection	IP 67

PN8050



Pressure sensor with display

PN-400-SDR14-KFPKG/US/ /V

Tests / approvals		
EMC	IEC 801/2 ESD	4 kV CD / 8 kV AD
	IEC 801/3 HF	10 V/m
	IEC 801/4 Burst	2 kV
Shock resistance	DIN IEC 68-2-27	50 g (11 ms)
Vibration resistance	DIN IEC 68-2-6	20 g (10...2000 Hz)
Mechanical data		
Material	stainless steel (1.4404 / 316L); PBT; PC; NBR; EPDM/X; FKM	
Materials (wetted parts)	stainless steel (1.4571/316Ti ); ceramics; FKM	
Min. pressure cycles	100 million	
Process connection	threaded connection G 1/4 Internal thread	
Displays / operating elements		
Display	Switching status	LED, red
	Function display	7-segment LED display
	Measured values	7-segment LED display
Remarks		
Pack quantity	1 pcs.	

Electrical connection

Connector: 1 x M12; coding: A

