

# PN8027

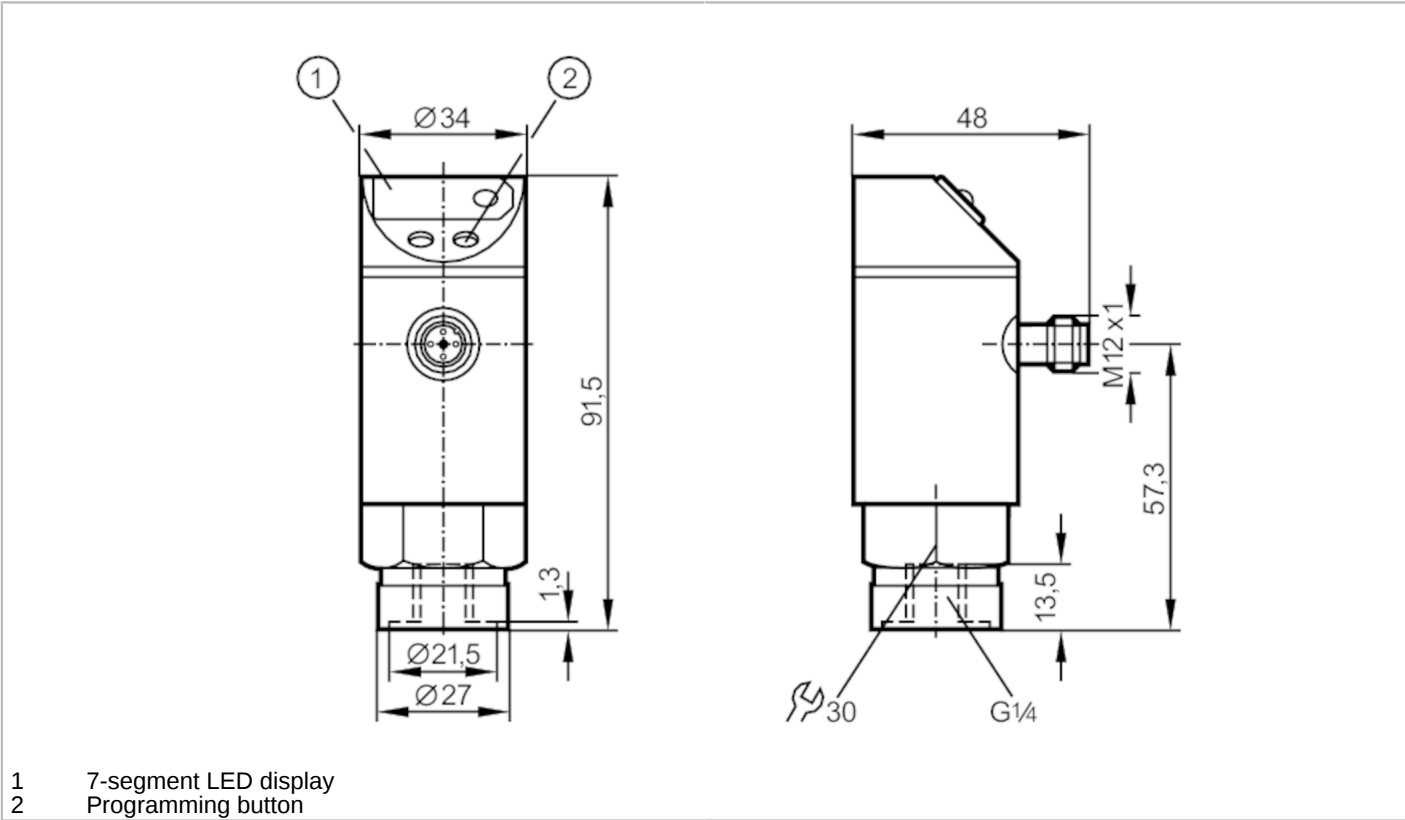


## Pressure sensor with display

PN-001-RBR14-KFPKG/US/ IV

Article no longer available - archive entry

Alternative articles: PN3007  
When selecting an alternative article and accessories please note that technical data may differ!



Product characteristics	
Number of inputs and outputs	Number of digital outputs: 1; Number of analog outputs: 1
Measuring range [bar]	0...1
Process connection	threaded connection G 1/4 Internal thread
Application	
Application	for industrial applications
Media	liquids and gases
Medium temperature [°C]	-25...80
Min. bursting pressure [bar]	30
Pressure rating [bar]	10
Type of pressure	relative pressure
Electrical data	
Operating voltage [V]	20...30 DC
Current consumption [mA]	< 60
Inputs / outputs	
Number of inputs and outputs	Number of digital outputs: 1; Number of analog outputs: 1



## Pressure sensor with display

PN-001-RBR14-KFPKG/US/ /V

Outputs									
Total number of outputs	2								
Output signal	switching signal; analog signal; (configurable)								
Electrical design	PNP								
Number of digital outputs	1								
Max. voltage drop switching output DC [V]	2								
Permanent current rating of switching output DC [mA]	250								
Number of analog outputs	1								
Analog current output [mA]	4...20								
Max. load [Ω]	500								
Measuring/setting range									
Measuring range [bar]	0...1								
Set point SP [bar]	0.05...1								
Reset point rP [bar]	0.03...0.98								
In steps of [bar]	0.01								
Accuracy / deviations									
Switch point accuracy [% of the final value]	< ± 2,0								
Repeatability [% of the final value]	< ± 0,25; (with temperature fluctuations < 10 K)								
Characteristics deviation [% of the final value]	< ± 2,0								
Temperature drift per 10 K	< ± 0.3								
Reaction times									
Switching frequency for a given set response time of one output	Response[ms] time (dAP)	15	20	30	50	90	170	330	
	Switching [Hz] frequency	50	35	30	20	15	9	5	
Response time [ms]	at rectangular pressure characteristic; Set point (SPx) = 70 %; Reset point (rPx) = 30 %								
Delay time programmable dS, dr [s]	0, 0,2, 0,4,...3								
Software / programming									
Adjustment of the switch point	Programming button								
Operating conditions									
Ambient temperature [°C]	-25...80								
Storage temperature [°C]	-40...100								
Protection	IP 65								
Tests / approvals									
EMC	IEC 801/2 ESD				4 kV CD / 8 kV AD				
	IEC 801/3 HF				10 V/m				
	IEC 801/4 Burst				2 kV				

PN8027



Pressure sensor with display

PN-001-RBR14-KFPKG/US/ /V

Mechanical data		
Material	brass nickel-plated; PBT; PC; PA	
Materials (wetted parts)	brass nickel-plated; ceramics; FKM; NBR; EPDM/X	
Min. pressure cycles	100 million	
Process connection	threaded connection G 1/4 Internal thread	

Displays / operating elements		
Display	Switching status	LED, red
	Function display	7-segment LED display
	Measured values	7-segment LED display

Remarks		
Pack quantity	1 pcs.	

Electrical connection

Connector: 1 x M12; coding: A

