

PN3222

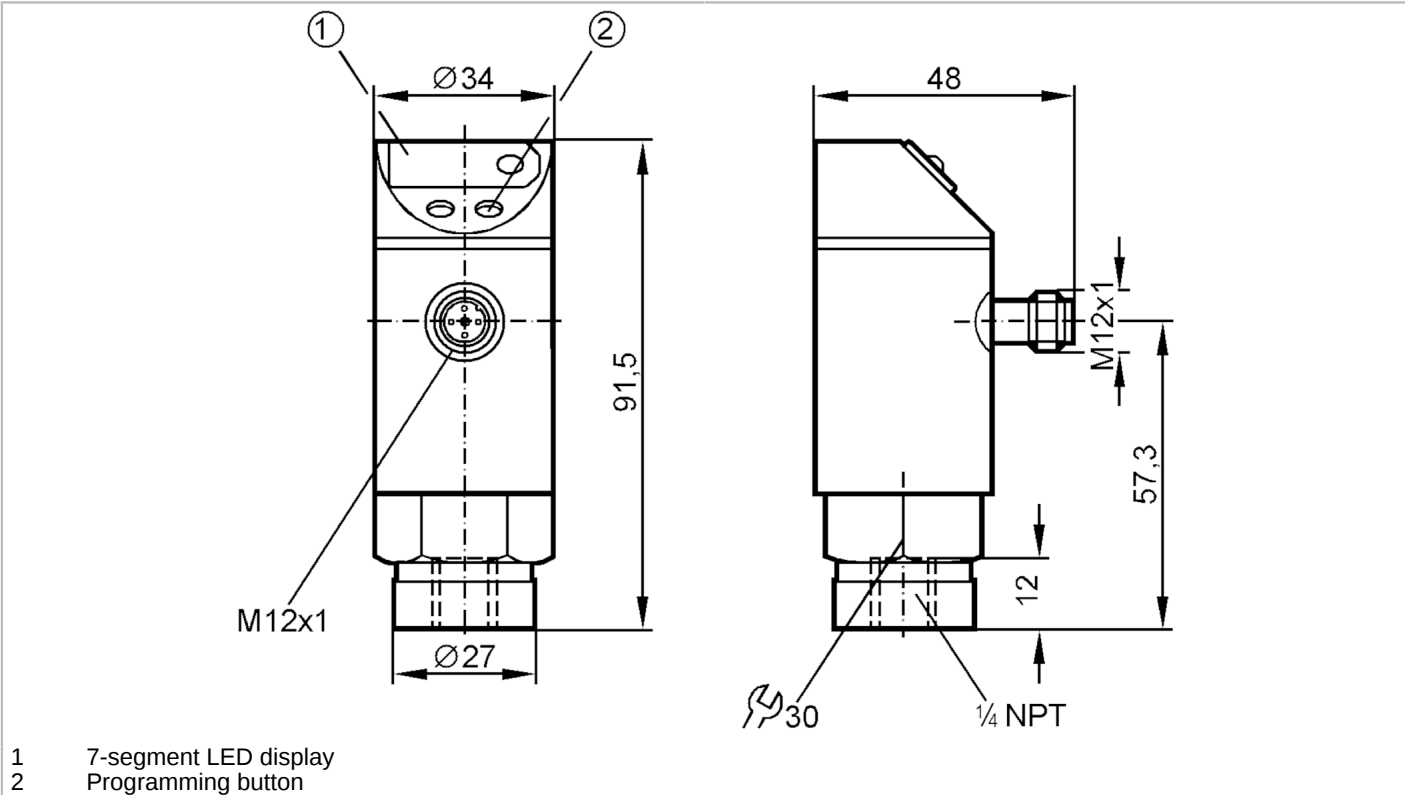


Pressure sensor with display

PN-100PSBN14-KFPKG/US/ IV

Article no longer available - archive entry

Alternative articles: PN2222
When selecting an alternative article and accessories please note that technical data may differ!



Product characteristics		
Number of inputs and outputs		Number of digital outputs: 1; Number of analog outputs: 1
Measuring range [psi]		
Process connection		
		0...1000
		threaded connection 1/4" NPT external thread
Application		
Application		for industrial applications
Media		liquids and gases
Conditionally suitable for		For gaseous media the application is limited to max. 25 bar.
Medium temperature [°C]		-25...80
Min. bursting pressure [psi]		9000
Pressure rating [psi]		4500
Type of pressure		relative pressure
Electrical data		
Operating voltage [V]		20...30 DC
Current consumption [mA]		< 60
Protection class		III
Reverse polarity protection		yes
Power-on delay time [s]		0.2



Pressure sensor with display

PN-100PSBN14-KFPKG/US/ IV

Integrated watchdog	yes										
Inputs / outputs											
Number of inputs and outputs	Number of digital outputs: 1; Number of analog outputs: 1										
Outputs											
Total number of outputs	2										
Output signal	switching signal; analog signal; (configurable)										
Electrical design	PNP										
Number of digital outputs	1										
Max. voltage drop switching output DC [V]	2										
Permanent current rating of switching output DC [mA]	250										
Number of analog outputs	1										
Analog current output [mA]	4...20										
Max. load [Ω]	500										
Short-circuit protection	yes										
Type of short-circuit protection	yes (non-latching)										
Overload protection	yes										
Measuring/setting range											
Measuring range [psi]	0...1000										
Set point SP [psi]	10...999										
Reset point rP [psi]	5...995										
In steps of [psi]	5										
Accuracy / deviations											
Switch point accuracy [% of the final value]	< ± 1,5										
Repeatability [% of the final value]	< ± 0,25; (with temperature fluctuations < 10 K)										
Characteristics deviation [% of the final value]	< ± 1,0										
Temperature drift per 10 K	< ± 0.3										
Reaction times											
Switching frequency for a given set response time of one output	Response time (dAP) [ms]	3	6	10	17	30	60	125	250	500	
	Switching frequency [Hz]	170	80	50	30	16	8	4	2	1	
Response time [ms]	at rectangular pressure characteristic; Set point (SPx) = 70 %; Reset point (rPx) = 30 %										
Delay time programmable dS, dr [s]	0, 0,2,...10, 11,...50										
Max. response time analog output [ms]	3										
Software / programming											
Adjustment of the switch point	Programming button										

PN3222



Pressure sensor with display

PN-100PSBN14-KFPKG/US/ IV

Operating conditions		
Ambient temperature	[°C]	-25...80
Storage temperature	[°C]	-40...100
Protection		IP 67

Tests / approvals		
EMC	EN 61000-4-2 ESD	4 kV CD / 8 kV AD
	EN 61000-4-3 HF radiated	10 V/m
	EN 61000-4-4 Burst	2 kV
	EN 61000-4-6 HF conducted	10 V
Shock resistance	DIN IEC 68-2-27	50 g (11 ms)
Vibration resistance	DIN IEC 68-2-6	20 g (10...2000 Hz)

Mechanical data	
Material	EPDM/X; FKM; NBR; PBT; PC; stainless steel (1.4301 / 304)
Materials (wetted parts)	FKM; ceramics; stainless steel (1.4305 / 303)
Min. pressure cycles	100 million
Process connection	threaded connection 1/4" NPT external thread

Displays / operating elements		
Display	Switching status	LED, red
	Function display	7-segment LED display
	Measured values	7-segment LED display

Remarks	
Pack quantity	1 pcs.

Electrical connection

Connector: 1 x M12; coding: A



Connection

