

# PB7027

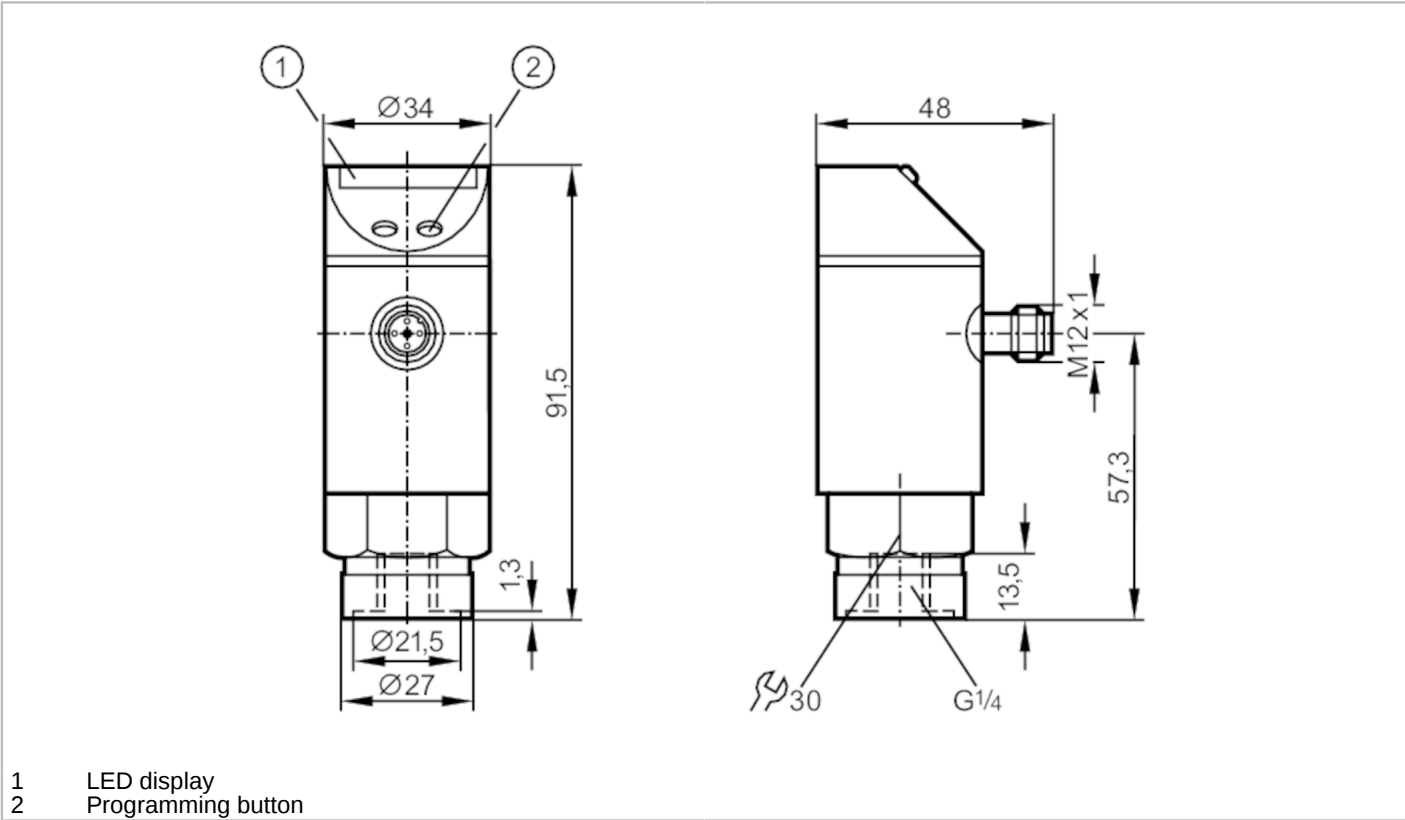


## Pressure sensor with LED bar display

PB-001-RBR14-QFPKG/US/ IV

Article no longer available - archive entry

Alternative articles: PN7007  
When selecting an alternative article and accessories please note that technical data may differ!



Product characteristics		
Number of inputs and outputs		Number of digital outputs: 2
Measuring range [bar]		0...1
Process connection		threaded connection G 1/4 Internal thread
Application		
Application		for industrial applications
Media		liquids and gases
Medium temperature [°C]		-25...80
Min. bursting pressure [bar]		30
Pressure rating [bar]		10
Type of pressure		relative pressure
Electrical data		
Operating voltage [V]		18...30 DC
Current consumption [mA]		< 50
Min. insulation resistance [MΩ]		100; (500 V DC)
Protection class		III
Reverse polarity protection		yes



## Pressure sensor with LED bar display

PB-001-RBR14-QFPKG/US/ IV

Power-on delay time	[s]	0.2
Integrated watchdog		yes
<b>Inputs / outputs</b>		
Number of inputs and outputs		Number of digital outputs: 2
<b>Outputs</b>		
Total number of outputs		2
Output signal		switching signal
Electrical design		PNP
Number of digital outputs		2
Output function		normally open / closed; (configurable)
Max. voltage drop switching output DC	[V]	2
Permanent current rating of switching output DC	[mA]	250
Switching frequency DC	[Hz]	10
Short-circuit protection		yes
Type of short-circuit protection		yes (non-latching)
Overload protection		yes
<b>Measuring/setting range</b>		
Measuring range	[bar]	0...1
Set point SP	[bar]	0.05...1
In steps of	[bar]	0.01
Hysteresis	[bar]	0.02
<b>Accuracy / deviations</b>		
Switch point accuracy [% of the final value]		$< \pm 2,0$
Repeatability [% of the final value]		$< \pm 0,25$ ; (with temperature fluctuations $< 10$ K)
Temperature drift per 10 K		$< \pm 0.3$
<b>Software / programming</b>		
Adjustment of the switch point		Programming button
<b>Operating conditions</b>		
Ambient temperature	[°C]	-25...80
Storage temperature	[°C]	-40...100
Protection		IP 65
<b>Tests / approvals</b>		
EMC	EN 61000-4-2 ESD	4 kV CD / 8 kV AD
	EN 61000-4-3 HF radiated	10 V/m
	EN 61000-4-4 Burst	2 kV
	EN 61000-4-6 HF conducted	10 V
Shock resistance	DIN IEC 68-2-27	50 g (11 ms)
Vibration resistance	DIN IEC 68-2-6	20 g (10...2000 Hz)

PB7027



Pressure sensor with LED bar display

PB-001-RBR14-QFPKG/US/ IV

Mechanical data		
Material	EPDM/X; FKM; NBR; PBT; PC; PTFE; stainless steel (1.4301 / 304)	
Materials (wetted parts)	FKM; ceramics; stainless steel (1.4305 / 303)	
Min. pressure cycles	100 million	
Process connection	threaded connection G 1/4 Internal thread	

Displays / operating elements		
Display	Switching status	2 x LED, yellow
	Measured values	10 x LED, green Resolution 10 % of the final value

Remarks		
Pack quantity	1 pcs.	

Electrical connection

Connector: 1 x M12; coding: A

