

PB5223

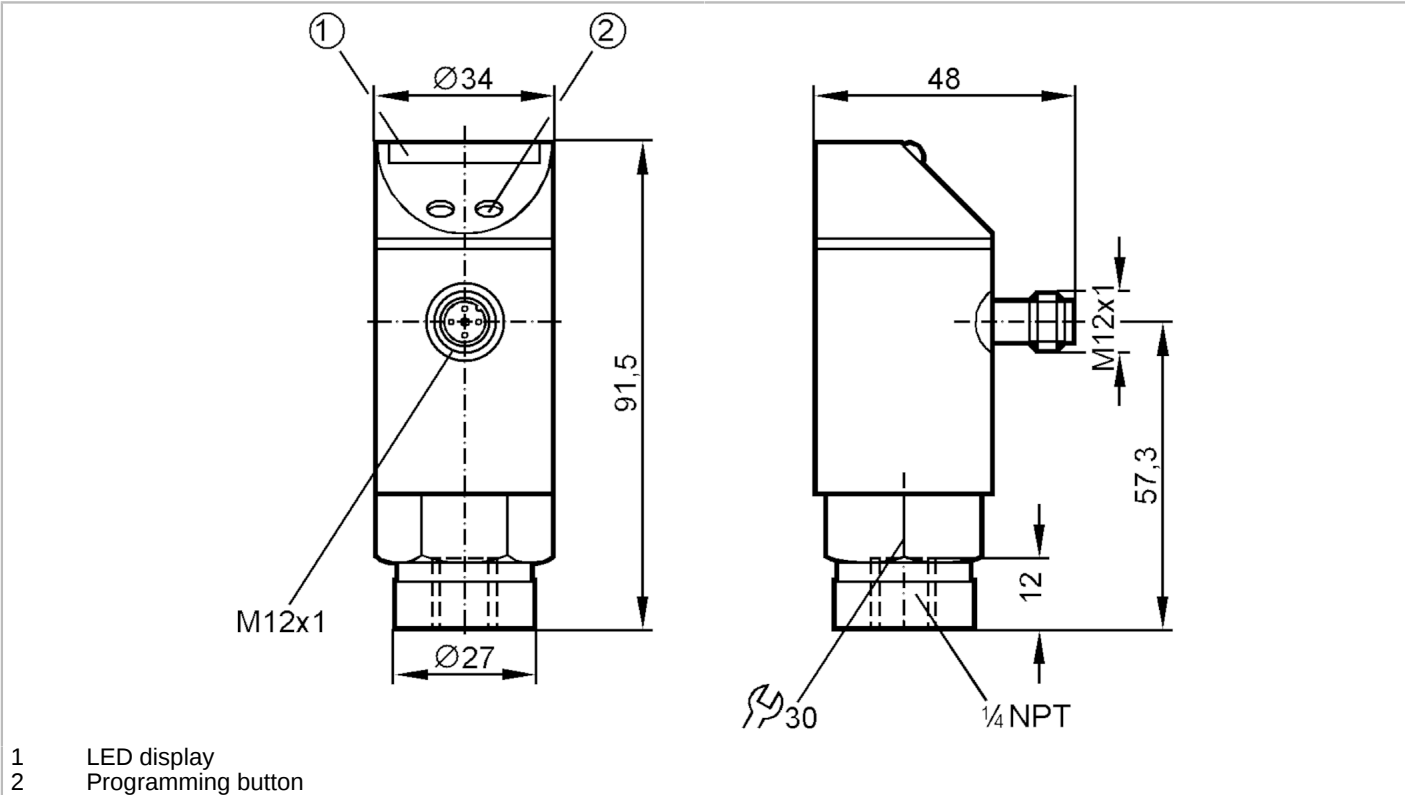


Pressure sensor with LED bar display

PB-040PSBN14-HFPKG/US/ IV

Article no longer available - archive entry

Alternative articles: PN5203
When selecting an alternative article and accessories please note that technical data may differ!



Product characteristics		
Number of inputs and outputs		Number of digital outputs: 1
Measuring range	[psi]	0...400
Process connection		threaded connection 1/4" NPT external thread
Application		
System		gold-plated contacts
Application		for industrial applications
Media		liquids and gases
Medium temperature	[°C]	-25...80
Min. bursting pressure	[psi]	5075
Pressure rating	[psi]	1500
Type of pressure		relative pressure
Electrical data		
Operating voltage	[V]	18...30 DC
Current consumption	[mA]	< 50
Min. insulation resistance	[MΩ]	100; (500 V DC)
Protection class		III
Reverse polarity protection		yes



Pressure sensor with LED bar display

PB-040PSBN14-HFPKG/US/ IV

Power-on delay time	[s]	0.2
Integrated watchdog		yes
Inputs / outputs		
Number of inputs and outputs		Number of digital outputs: 1
Outputs		
Total number of outputs		1
Output signal		switching signal
Electrical design		PNP
Number of digital outputs		1
Output function		normally open / closed; (configurable)
Max. voltage drop switching output DC	[V]	2
Permanent current rating of switching output DC	[mA]	250
Switching frequency DC	[Hz]	10
Short-circuit protection		yes
Type of short-circuit protection		yes (non-latching)
Overload protection		yes
Measuring/setting range		
Measuring range	[psi]	0...400
Set point SP	[psi]	20...400
Reset point rP	[psi]	12...392
In steps of	[psi]	4
Note on hysteresis		adjustable
Accuracy / deviations		
Switch point accuracy	[% of the final value]	< ± 2,0
Repeatability		
Temperature drift per 10 K		< ± 0.3
Software / programming		
Adjustment of the switch point		Programming button
Operating conditions		
Ambient temperature	[°C]	-25...80
Storage temperature	[°C]	-40...100
Protection		IP 65
Tests / approvals		
EMC	EN 61000-4-2 ESD	4 kV CD / 8 kV AD
	EN 61000-4-3 HF radiated	10 V/m
	EN 61000-4-4 Burst	2 kV
	EN 61000-4-6 HF conducted	10 V
Shock resistance	DIN IEC 68-2-27	50 g (11 ms)
Vibration resistance	DIN IEC 68-2-6	20 g (10...2000 Hz)

PB5223



Pressure sensor with LED bar display

PB-040PSBN14-HFPKG/US/ IV

Mechanical data		
Material	EPDM/X; FKM; NBR; PA; PBT; PC; PTFE; stainless steel (1.4301 / 304)	
Materials (wetted parts)	FKM; ceramics; stainless steel (1.4305 / 303)	
Min. pressure cycles	100 million	
Process connection	threaded connection 1/4" NPT external thread	

Displays / operating elements		
Display	Switching status	LED, yellow
	Measured values	10 x LED, green Resolution 10 % of the final value

Remarks	
Pack quantity	1 pcs.

Electrical connection

Connector: 1 x M12; coding: A; Contacts: gold-plated

