

PB5222

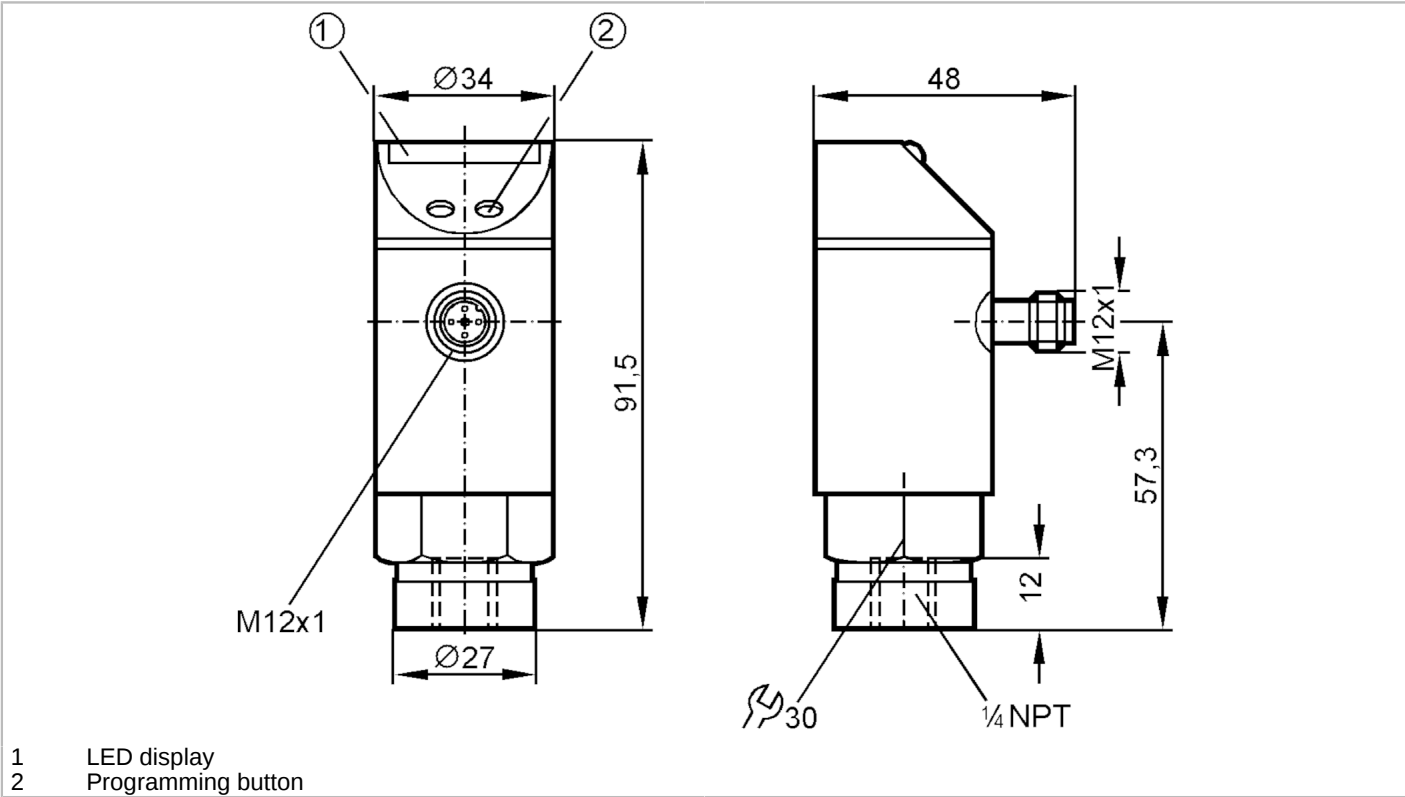


Pressure sensor with LED bar display

PB-100PSBN14-HFPKG/US/ IV

Article no longer available - archive entry

Alternative articles: PN5202
When selecting an alternative article and accessories please note that technical data may differ!



Product characteristics		
Number of inputs and outputs		Number of digital outputs: 1
Measuring range	[psi]	0...1000
Process connection		threaded connection 1/4" NPT external thread
Application		
System		gold-plated contacts
Application		for industrial applications
Media		liquids and gases
Conditionally suitable for		For gaseous media the application is limited to max. 25 bar.
Medium temperature	[°C]	-25...80
Min. bursting pressure	[psi]	9000
Pressure rating	[psi]	4500
Type of pressure		relative pressure
Electrical data		
Operating voltage	[V]	18...30 DC
Current consumption	[mA]	< 50
Min. insulation resistance	[MΩ]	100; (500 V DC)
Protection class		III



Pressure sensor with LED bar display

PB-100PSBN14-HFPKG/US/ IV

Reverse polarity protection	yes
Power-on delay time [s]	0.2
Integrated watchdog	yes

Inputs / outputs

Number of inputs and outputs	Number of digital outputs: 1
------------------------------	------------------------------

Outputs

Total number of outputs	1
Output signal	switching signal
Electrical design	PNP
Number of digital outputs	1
Output function	normally open / closed; (configurable)
Max. voltage drop switching output DC [V]	2
Permanent current rating of switching output DC [mA]	250
Switching frequency DC [Hz]	10
Short-circuit protection	yes
Type of short-circuit protection	yes (non-latching)
Overload protection	yes

Measuring/setting range

Measuring range [psi]	0...1000
Set point SP [psi]	50...1000
Reset point rP [psi]	30...980
In steps of [psi]	10
Note on hysteresis	adjustable

Accuracy / deviations

Switch point accuracy [% of the final value]	$< \pm 2,0$
Repeatability [% of the final value]	$< \pm 0,25$; (with temperature fluctuations < 10 K)
Temperature drift per 10 K	$< \pm 0.3$

Software / programming

Adjustment of the switch point	Programming button
--------------------------------	--------------------

Operating conditions

Ambient temperature [°C]	-25...80
Storage temperature [°C]	-40...100
Protection	IP 65

Tests / approvals

EMC	EN 61000-4-2 ESD	4 kV CD / 8 kV AD
	EN 61000-4-3 HF radiated	10 V/m
	EN 61000-4-4 Burst	2 kV
	EN 61000-4-6 HF conducted	10 V
Shock resistance	DIN IEC 68-2-27	50 g (11 ms)
Vibration resistance	DIN IEC 68-2-6	20 g (10...2000 Hz)

PB5222



Pressure sensor with LED bar display

PB-100PSBN14-HFPKG/US/ IV

Mechanical data		
Material	EPDM/X; FKM; NBR; PA; PBT; PC; PTFE; stainless steel (1.4301 / 304)	
Materials (wetted parts)	FKM; ceramics; stainless steel (1.4305 / 303)	
Min. pressure cycles	100 million	
Process connection	threaded connection 1/4" NPT external thread	

Displays / operating elements		
Display	Switching status	LED, yellow
	Measured values	10 x LED, green Resolution 10 % of the final value

Remarks	
Pack quantity	1 pcs.

Electrical connection

Connector: 1 x M12; coding: A; Contacts: gold-plated

