



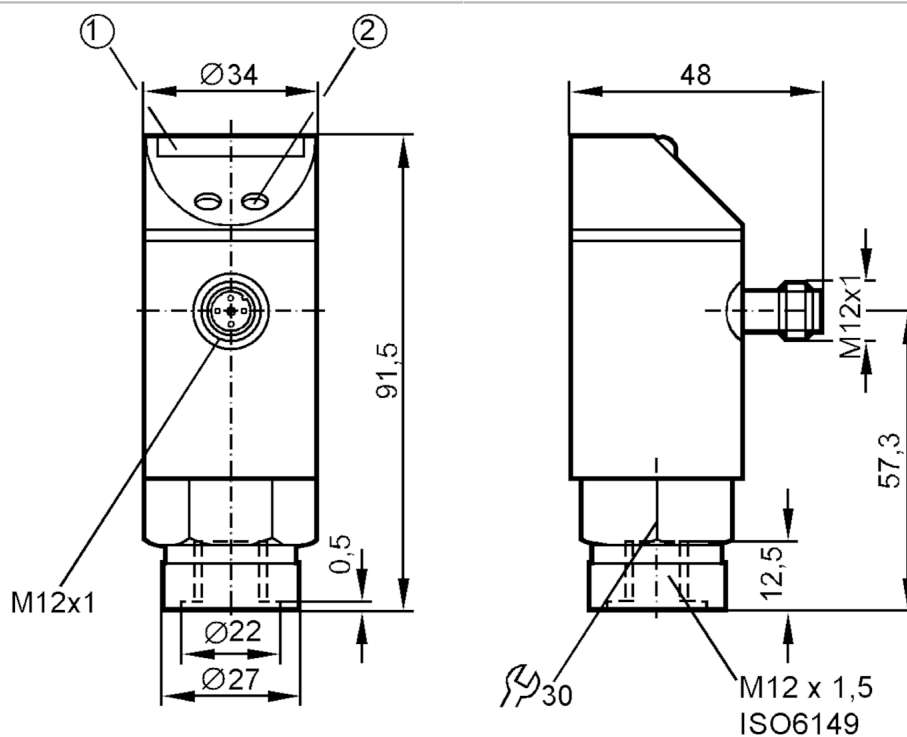
Pressure sensor with LED bar display

PB-100-SBM12-HFPKG/US/ IV

Article no longer available - archive entry

Alternative articles: PN5002

When selecting an alternative article and accessories please note that technical data may differ!



- 1 LED display
2 Programming button



Product characteristics

Number of inputs and outputs	Number of digital outputs: 1
Measuring range [bar]	0...100
Process connection	threaded connection M12 x 1,5 Internal thread ISO 6149

Application

System	gold-plated contacts
Application	for industrial applications
Media	liquids and gases
Conditionally suitable for	For gaseous media the application is limited to max. 25 bar.
Medium temperature [°C]	-25...80
Min. bursting pressure [bar]	650
Pressure rating [bar]	300
Type of pressure	relative pressure

Electrical data

Operating voltage [V]	18...30 DC
Current consumption [mA]	< 50
Min. insulation resistance [MΩ]	100; (500 V DC)
Protection class	III



Pressure sensor with LED bar display

PB-100-SBM12-HFPKG/US/ IV

Reverse polarity protection	yes
Power-on delay time [s]	0.2
Integrated watchdog	yes

Inputs / outputs

Number of inputs and outputs	Number of digital outputs: 1
------------------------------	------------------------------

Outputs

Total number of outputs	1
Output signal	switching signal
Electrical design	PNP
Number of digital outputs	1
Output function	normally open / closed; (configurable)
Max. voltage drop switching output DC [V]	2
Permanent current rating of switching output DC [mA]	250
Switching frequency DC [Hz]	10
Short-circuit protection	yes
Type of short-circuit protection	yes (non-latching)
Overload protection	yes

Measuring/setting range

Measuring range [bar]	0...100
Set point SP [bar]	5...100
Reset point rP [bar]	3...98
In steps of [bar]	1
Note on hysteresis	adjustable

Accuracy / deviations

Switch point accuracy [% of the final value]	$< \pm 2,0$
Repeatability [% of the final value]	$< \pm 0,25$; (with temperature fluctuations < 10 K)
Temperature drift per 10 K	$< \pm 0.3$

Software / programming

Adjustment of the switch point	Programming button
--------------------------------	--------------------

Operating conditions

Ambient temperature [°C]	-25...80
Storage temperature [°C]	-40...100
Protection	IP 67

Tests / approvals

EMC	EN 61000-4-2 ESD	4 kV CD / 8 kV AD
	EN 61000-4-3 HF radiated	10 V/m
	EN 61000-4-4 Burst	2 kV
	EN 61000-4-6 HF conducted	10 V
Shock resistance	DIN IEC 68-2-27	50 g (11 ms)
Vibration resistance	DIN IEC 68-2-6	20 g (10...2000 Hz)

PB5122



Pressure sensor with LED bar display

PB-100-SBM12-HFPKG/US/ IV

Mechanical data		
Dimensions	[mm]	Ø 34 / L = 91.5
Material		EPDM/X; FKM; NBR; PA; PBT; PC; stainless steel (1.4301 / 304)
Materials (wetted parts)		FKM; ceramics; stainless steel (1.4305 / 303)
Min. pressure cycles		100 million
Process connection		threaded connection M12 x 1,5 Internal thread ISO 6149
Displays / operating elements		
Display	Switching status	LED, yellow
	Measured values	10 x LED, green Resolution 10 % of the final value
Remarks		
Pack quantity		1 pcs.

Electrical connection

Connector: 1 x M12; coding: A; Contacts: gold-plated

