

PB5002

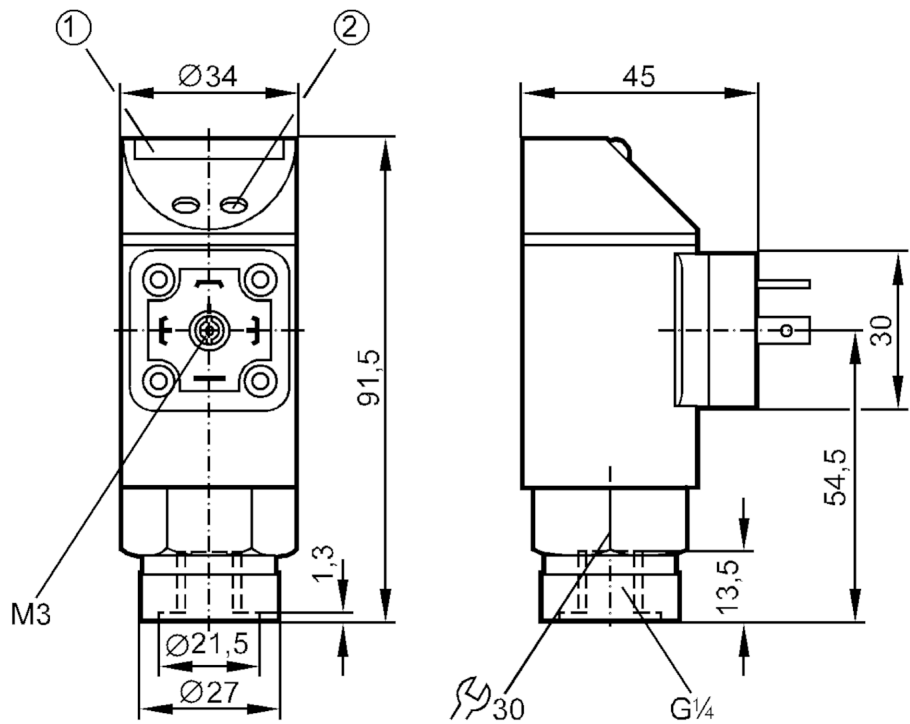


Pressure sensor with LED bar display

PB-100-SBR14-HFPKG/SS/ IV

Article no longer available - archive entry

Alternative articles: PN5002  
When selecting an alternative article and accessories please note that technical data may differ!



- 1 LED display
- 2 Programming button



Product characteristics	
Number of inputs and outputs	Number of digital outputs: 1
Measuring range [bar]	0...100
Process connection	threaded connection G 1/4 Internal thread
Application	
Application	for industrial applications
Media	liquids and gases
Conditionally suitable for	For gaseous media the application is limited to max. 25 bar.
Medium temperature [°C]	-25...80
Min. bursting pressure [bar]	650
Pressure rating [bar]	300
Type of pressure	relative pressure



## Pressure sensor with LED bar display

PB-100-SBR14-HFPKG/SS/ IV


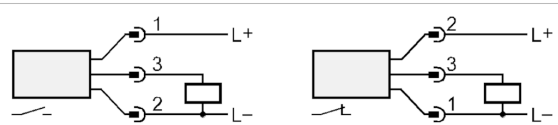
Electrical data		
Operating voltage	[V]	18...30 DC
Current consumption	[mA]	< 50
Min. insulation resistance	[MΩ]	100; (500 V DC)
Protection class		III
Reverse polarity protection		yes
Power-on delay time	[s]	0.2
Integrated watchdog		yes
Inputs / outputs		
Number of inputs and outputs		Number of digital outputs: 1
Outputs		
Total number of outputs		1
Output signal		switching signal
Electrical design		PNP
Number of digital outputs		1
Output function		normally open / closed; (configurable)
Max. voltage drop switching output DC	[V]	2
Permanent current rating of switching output DC	[mA]	250
Switching frequency DC	[Hz]	10
Short-circuit protection		yes
Type of short-circuit protection		yes (non-latching)
Overload protection		yes
Measuring/setting range		
Measuring range	[bar]	0...100
Set point SP	[bar]	5...100
Reset point rP	[bar]	3...98
In steps of	[bar]	1
Note on hysteresis		adjustable
Accuracy / deviations		
Switch point accuracy		< ± 2,0
	[% of the final value]	
Repeatability		< ± 0,25; (with temperature fluctuations < 10 K)
	[% of the final value]	
Temperature drift per 10 K		< ± 0.3
Software / programming		
Adjustment of the switch point		Programming button
Operating conditions		
Ambient temperature	[°C]	-25...80
Storage temperature	[°C]	-40...100
Protection		IP 65

PB5002



Pressure sensor with LED bar display

PB-100-SBR14-HFPKG/SS/ /V

Tests / approvals		
EMC	EN 61000-4-2 ESD	4 kV CD / 8 kV AD
	EN 61000-4-3 HF radiated	10 V/m
	EN 61000-4-4 Burst	2 kV
	EN 61000-4-6 HF conducted	10 V
Shock resistance	DIN IEC 68-2-27	50 g (11 ms)
Vibration resistance	DIN IEC 68-2-6	20 g (10...2000 Hz)
Mechanical data		
Material	EPDM/X; FKM; NBR; PA; PBT; PC; PTFE; stainless steel (1.4301 / 304)	
Materials (wetted parts)	FKM; ceramics; stainless steel (1.4305 / 303)	
Min. pressure cycles	100 million	
Process connection	threaded connection G 1/4 Internal thread	
Restrictor element integrated	no (can be retrofitted)	
Displays / operating elements		
Display	Switching status	LED, yellow
	Measured values	10 x LED, green Resolution 10 % of the final value
Remarks		
Pack quantity	1 pcs.	
Electrical connection		
Connector: 1 x valve type A DIN (DIN EN 175301-803)		
<div></div>		
<div></div>		