

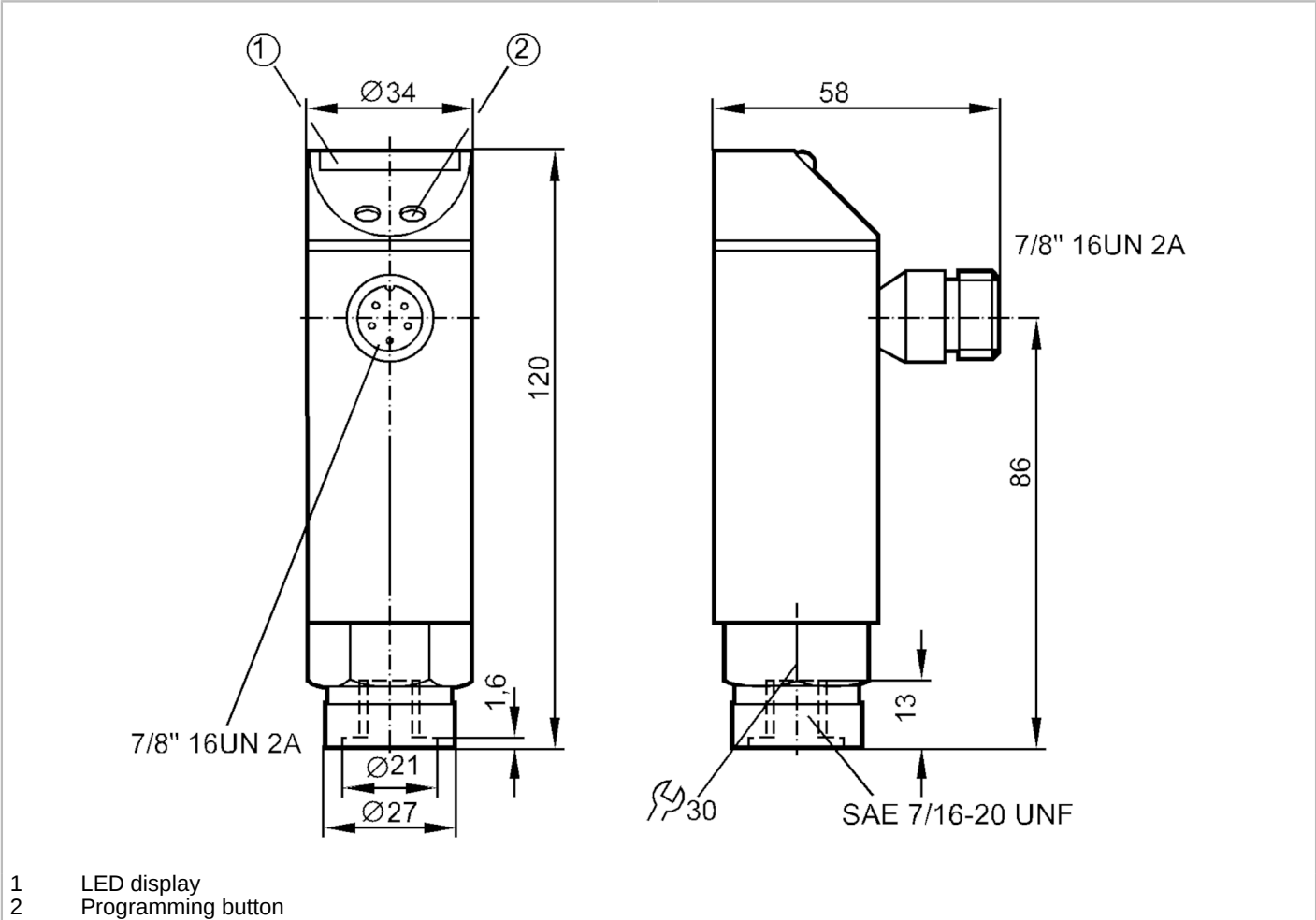
PB4313



Pressure sensor with LED bar display

PB-040PSBU76-HFBOW/LS/ IV

Article no longer available - archive entry



Product characteristics		
Number of inputs and outputs		Number of digital outputs: 1
Measuring range	[psi]	0...400
Process connection		threaded connection 7/16" - 20 UNF Internal thread
Application		
Application		for industrial applications
Media		liquids and gases
Medium temperature	[°C]	-25...70
Min. bursting pressure	[psi]	5075
Pressure rating	[psi]	1500
Type of pressure		relative pressure
Electrical data		
Operating voltage	[V]	102...132 AC
Current consumption	[mA]	20
Protection class		I
Power-on delay time	[s]	0.35



Pressure sensor with LED bar display

PB-040PSBU76-HFBOW/LS/ IV

Integrated watchdog	yes	
Inputs / outputs		
Number of inputs and outputs	Number of digital outputs: 1	
Outputs		
Total number of outputs	1	
Output signal	switching signal	
Number of digital outputs	1	
Output function	normally open	
Max. voltage drop switching output AC [V]	2	
Permanent current rating of switching output AC [mA]	250; ((...70 °C) 1000 (...60 °C) 1500 (...45 °C) 2500 (...20 °C))	
Switching frequency AC [Hz]	10	
Short-circuit protection	no	
Overload protection	no	
Measuring/setting range		
Measuring range [psi]	0...400	
Set point SP [psi]	20...400	
Reset point rP [psi]	12...392	
In steps of [psi]	4	
Note on hysteresis	adjustable	
Accuracy / deviations		
Switch point accuracy [% of the final value]	< ± 2,0	
Repeatability [% of the final value]	< ± 0,25; (with temperature fluctuations < 10 K)	
Temperature drift per 10 K	< ± 0.3	
Software / programming		
Adjustment of the switch point	Programming button	
Operating conditions		
Ambient temperature [°C]	-25...70	
Storage temperature [°C]	-40...100	
Protection	IP 65	
Tests / approvals		
EMC	IEC 801/2 ESD	4 kV CD / 8 kV AD
	IEC 801/3 HF	10 V/m
	IEC 801/4 Burst	2 kV
Shock resistance	DIN IEC 68-2-27	50 g (11 ms)
Vibration resistance	DIN IEC 68-2-6	20 g (10...2000 Hz)
Mechanical data		
Material	EPDM/X; FKM; NBR; PBT; PC; stainless steel (1.4301 / 304)	
Materials (wetted parts)	FKM; ceramics; stainless steel (1.4305 / 303)	
Min. pressure cycles	100 million	
Process connection	threaded connection 7/16" - 20 UNF Internal thread	

PB4313



Pressure sensor with LED bar display

PB-040PSBU76-HFBOW/LS/ IV

Displays / operating elements

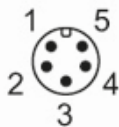
Display	Switching status	LED, yellow
	Measured values	10 x LED, green Resolution 10 % of the final value

Remarks

Pack quantity	1 pcs.
---------------	--------

Electrical connection

Connector: 1 x 7/8"; coding: A



Connection

