

PB4014

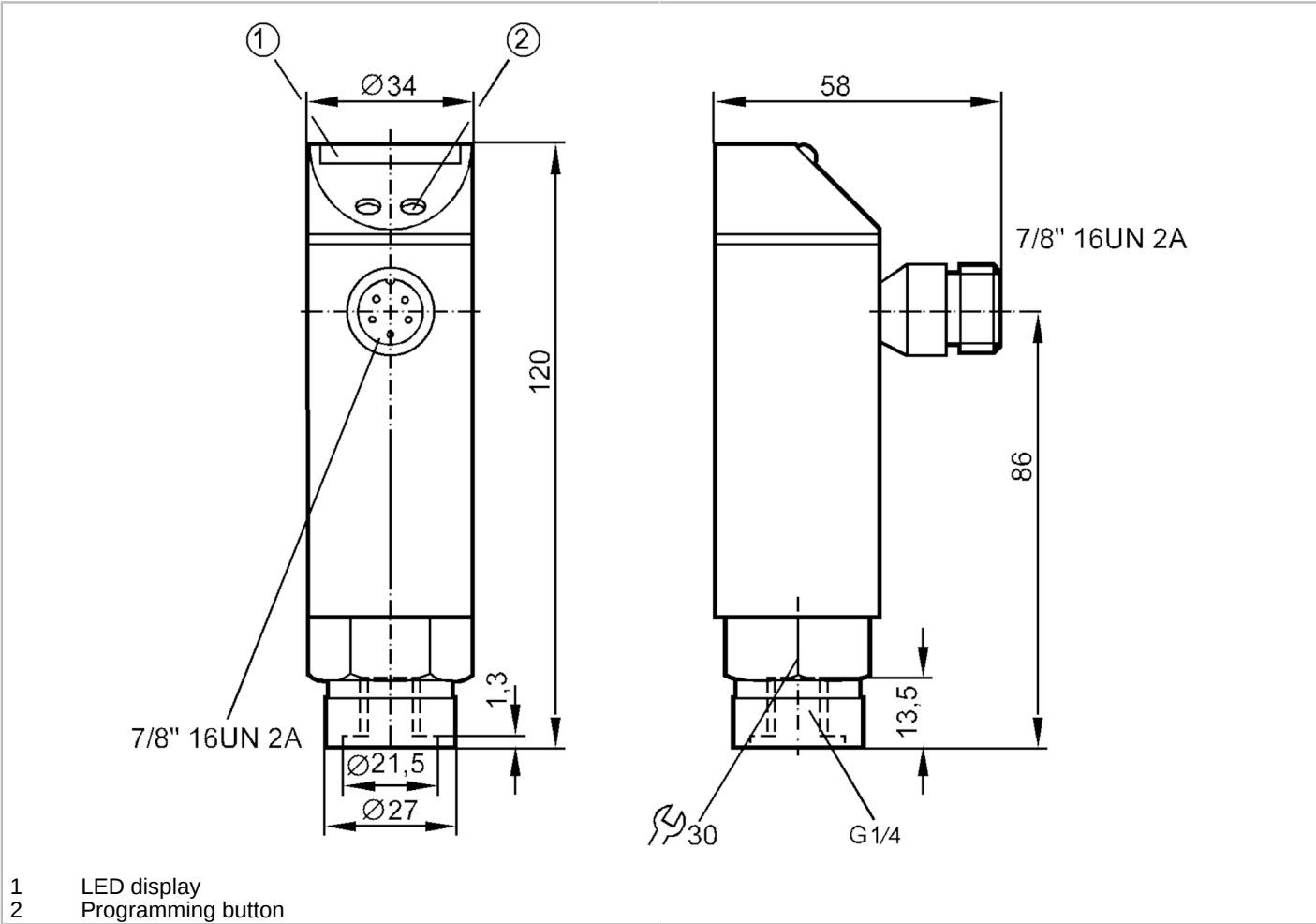


Pressure sensor with LED bar display

PB-010-RBR14-HFBOW/LS/ IV

Article no longer available - archive entry

Alternative articles: PN4224 + E30058  
When selecting an alternative article and accessories please note that technical data may differ!



Product characteristics	
Number of inputs and outputs	Number of digital outputs: 1
Measuring range [bar]	0...10
Process connection	threaded connection G 1/4 Internal thread
Application	
Application	for industrial applications
Media	liquids and gases
Medium temperature [°C]	-25...70
Min. bursting pressure [bar]	150
Pressure rating [bar]	50
Type of pressure	relative pressure
Electrical data	
Operating voltage [V]	102...132 AC



## Pressure sensor with LED bar display

PB-010-RBR14-HFBOW/LS/ /V

Current consumption	[mA]	20
Power-on delay time	[s]	0.35
Integrated watchdog		yes

## Inputs / outputs

Number of inputs and outputs	Number of digital outputs: 1
------------------------------	------------------------------

## Outputs

Total number of outputs	1
Output signal	switching signal
Number of digital outputs	1
Output function	normally open
Max. voltage drop switching output AC	[V] 2
Permanent current rating of switching output AC	[mA] 250; (...70 °C) 1000 (...60 °C) 1500 (...45 °C) 2500 (...20 °C))
Short-circuit protection	no
Overload protection	no

## Measuring/setting range

Measuring range	[bar]	0...10
Set point SP	[bar]	0.5...10
Reset point rP	[bar]	0.3...9.8
In steps of	[bar]	0.1
Note on hysteresis		adjustable

## Accuracy / deviations

Switch point accuracy		< ± 2,0
	[% of the final value]	
Repeatability		< ± 0,25; (with temperature fluctuations < 10 K)
	[% of the final value]	
Temperature drift per 10 K		< ± 0.3

## Software / programming

Adjustment of the switch point	Programming button
--------------------------------	--------------------

## Operating conditions

Ambient temperature	[°C]	-25...70
Storage temperature	[°C]	-40...100
Protection		IP 65

## Tests / approvals

EMC	IEC 801/2 ESD	4 kV CD / 8 kV AD
	IEC 801/3 HF	10 V/m
	IEC 801/4 Burst	2 kV
Shock resistance	DIN IEC 68-2-27	50 g (11 ms)
Vibration resistance	DIN IEC 68-2-6	20 g (10...2000 Hz)

## Mechanical data

Material	EPDM/X; FKM; NBR; PBT; PC; stainless steel (1.4301 / 304)
Materials (wetted parts)	FKM; ceramics; stainless steel (1.4305 / 303)
Min. pressure cycles	100 million

PB4014



Pressure sensor with LED bar display

PB-010-RBR14-HFBOW/LS/ /V

Process connection	threaded connection G 1/4 Internal thread
Restrictor element integrated	no (can be retrofitted)

Displays / operating elements

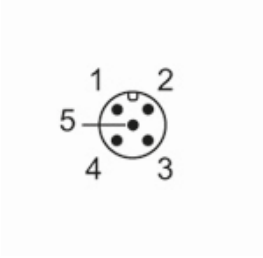
Display	Switching status	LED, yellow
	Measured values	10 x LED, green Resolution 10 % of the final value

Remarks

Pack quantity	1 pcs.
---------------	--------

Electrical connection

Connector: 1 x 7/8"; coding: A



Connection

