



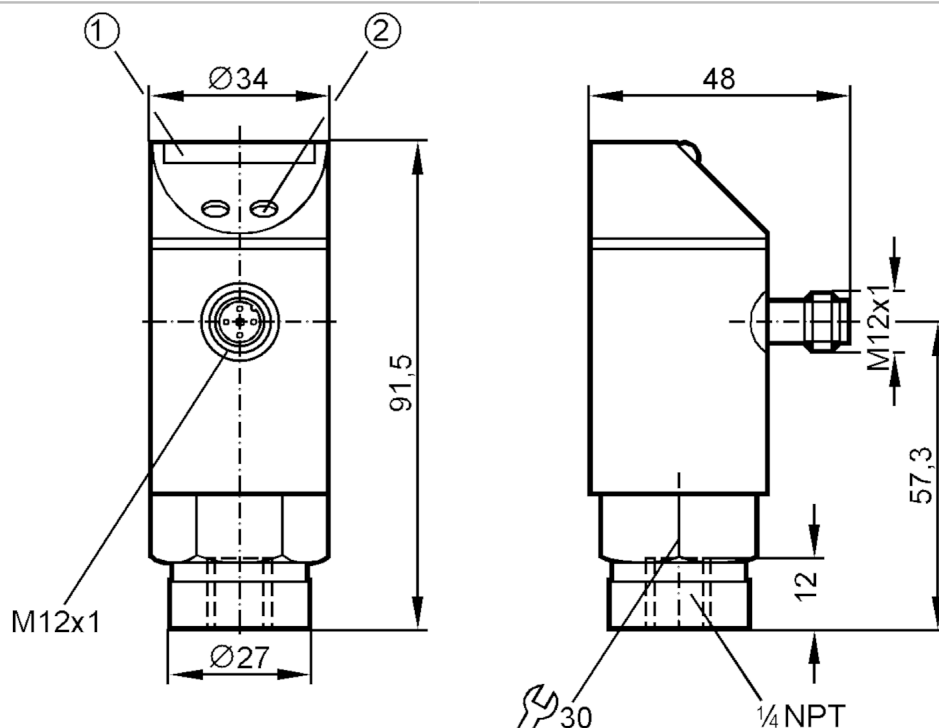
Pressure sensor with LED bar display

PB-010PRBN14-HFNKG/US IV

Article no longer available - archive entry

Alternative articles: PN7204

When selecting an alternative article and accessories please note that technical data may differ!



- 1 LED display
2 Programming button



Product characteristics

Number of inputs and outputs	Number of digital outputs: 1
Measuring range [psi]	0...100
Process connection	threaded connection 1/4" NPT external thread

Application

System	gold-plated contacts
Application	for industrial applications
Media	liquids and gases
Medium temperature [°C]	-25...80
Min. bursting pressure [psi]	2000
Pressure rating [psi]	700
Type of pressure	relative pressure

Electrical data

Operating voltage [V]	18...30 DC
Current consumption [mA]	< 50
Min. insulation resistance [MΩ]	100; (500 V DC)
Protection class	III
Reverse polarity protection	yes



Pressure sensor with LED bar display

PB-010PRBN14-HFNKG/US /V

Power-on delay time	[s]	0.2
Integrated watchdog		yes
Inputs / outputs		
Number of inputs and outputs	Number of digital outputs: 1	
Outputs		
Total number of outputs	1	
Output signal	switching signal	
Electrical design	NPN	
Number of digital outputs	1	
Output function	normally open / closed; (configurable)	
Max. voltage drop switching output DC	[V]	2
Permanent current rating of switching output DC	[mA]	250
Switching frequency DC	[Hz]	10
Short-circuit protection	yes	
Type of short-circuit protection	yes (non-latching)	
Overload protection	yes	
Measuring/setting range		
Measuring range	[psi]	0...100
Set point SP	[psi]	5...100
Reset point rP	[psi]	3...98
In steps of	[psi]	1
Note on hysteresis	adjustable	
Accuracy / deviations		
Switch point accuracy	< ± 2,0	
[% of the final value]		
Repeatability	< ± 0,25; (with temperature fluctuations < 10 K)	
[% of the final value]		
Temperature drift per 10 K	< ± 0.3	
Software / programming		
Adjustment of the switch point	Programming button	
Operating conditions		
Ambient temperature	[°C]	-25...80
Storage temperature	[°C]	-40...100
Protection	IP 65	
Tests / approvals		
EMC	EN 61000-4-2 ESD	4 kV CD / 8 kV AD
	EN 61000-4-3 HF radiated	10 V/m
	EN 61000-4-4 Burst	2 kV
	EN 61000-4-6 HF conducted	10 V
Shock resistance	DIN IEC 68-2-27	50 g (11 ms)
Vibration resistance	DIN IEC 68-2-6	20 g (10...2000 Hz)

PB0224



Pressure sensor with LED bar display

PB-010PRBN14-HFNKG/US /V

Mechanical data		
Material	EPDM/X; FKM; NBR; PA; PBT; PC; PTFE; stainless steel (1.4301 / 304)	
Materials (wetted parts)	stainless steel (1.4305 / 303); ceramics; FKM	
Min. pressure cycles	100 million	
Process connection	threaded connection 1/4" NPT external thread	

Displays / operating elements		
Display	Switching status	LED, yellow
	Measured values	10 x LED, green Resolution 10 % of the final value

Remarks	
Pack quantity	1 pcs.

Electrical connection

Connector: 1 x M12; coding: A; Contacts: gold-plated



Connection

