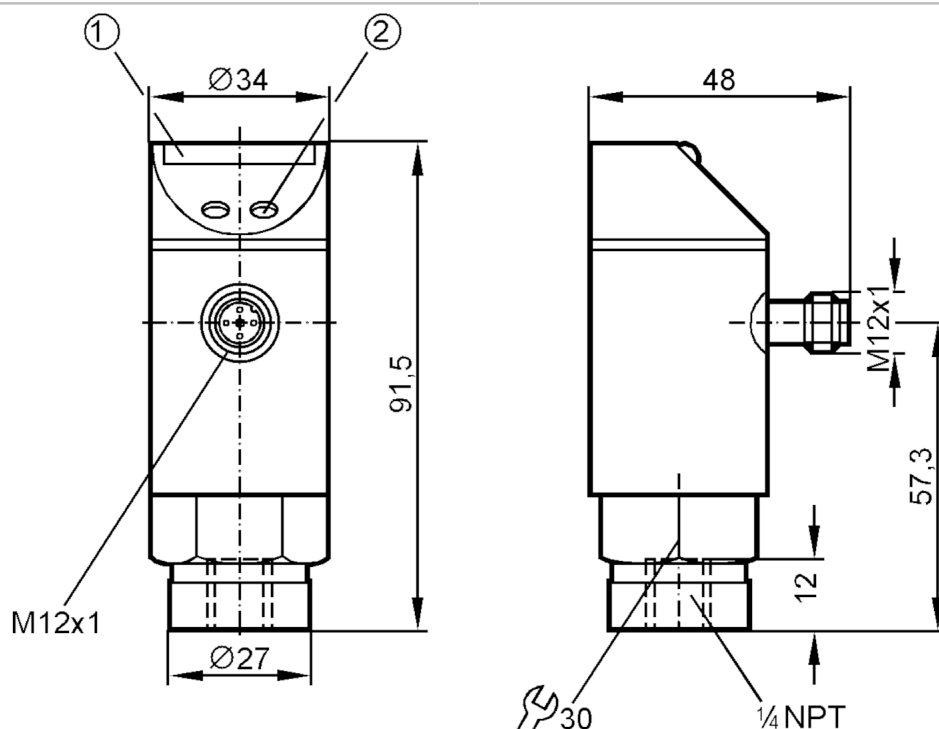




Pressure sensor with LED bar display

PB-100PSBN14-HFNKG/US/ IV

Article no longer available - archive entry



- 1 LED display
2 Programming button



Product characteristics

| | |
|------------------------------|--|
| Number of inputs and outputs | Number of digital outputs: 1 |
| Measuring range [psi] | 0...1000 |
| Process connection | threaded connection 1/4" NPT external thread |

Application

| | |
|------------------------------|--|
| System | gold-plated contacts |
| Application | for industrial applications |
| Media | liquids and gases |
| Conditionally suitable for | For gaseous media the application is limited to max. 25 bar. |
| Medium temperature [°C] | -25...80 |
| Min. bursting pressure [psi] | 9000 |
| Pressure rating [psi] | 4500 |
| Type of pressure | relative pressure |

Electrical data

| | |
|---------------------------------|-----------------|
| Operating voltage [V] | 18...30 DC |
| Current consumption [mA] | < 50 |
| Min. insulation resistance [MΩ] | 100; (500 V DC) |
| Protection class | III |
| Reverse polarity protection | yes |
| Power-on delay time [s] | 0.2 |



Pressure sensor with LED bar display

PB-100PSBN14-HFNKG/US/ IV


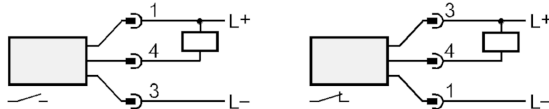
| | | |
|--|--|---------------------|
| Integrated watchdog | yes | |
| Inputs / outputs | | |
| Number of inputs and outputs | Number of digital outputs: 1 | |
| Outputs | | |
| Total number of outputs | 1 | |
| Output signal | switching signal | |
| Electrical design | NPN | |
| Number of digital outputs | 1 | |
| Output function | normally open / closed; (configurable) | |
| Max. voltage drop switching output DC [V] | 2 | |
| Permanent current rating of switching output DC [mA] | 250 | |
| Switching frequency DC [Hz] | 10 | |
| Short-circuit protection | yes | |
| Type of short-circuit protection | yes (non-latching) | |
| Overload protection | yes | |
| Measuring/setting range | | |
| Measuring range [psi] | 0...1000 | |
| Set point SP [psi] | 50...1000 | |
| Reset point rP [psi] | 30...980 | |
| In steps of [psi] | 10 | |
| Note on hysteresis | adjustable | |
| Accuracy / deviations | | |
| Switch point accuracy [% of the final value] | < ± 2,0 | |
| Repeatability [% of the final value] | < ± 0,25; (with temperature fluctuations < 10 K) | |
| Temperature drift per 10 K | < ± 0.3 | |
| Software / programming | | |
| Adjustment of the switch point | Programming button | |
| Operating conditions | | |
| Ambient temperature [°C] | -25...80 | |
| Storage temperature [°C] | -40...100 | |
| Protection | IP 67 | |
| Tests / approvals | | |
| EMC | EN 61000-4-2 ESD | 4 kV CD / 8 kV AD |
| | EN 61000-4-3 HF radiated | 10 V/m |
| | EN 61000-4-4 Burst | 2 kV |
| | EN 61000-4-6 HF conducted | 10 V |
| Shock resistance | DIN IEC 68-2-27 | 50 g (11 ms) |
| Vibration resistance | DIN IEC 68-2-6 | 20 g (10...2000 Hz) |

PB0222



Pressure sensor with LED bar display

PB-100PSBN14-HFNKG/US/ IV

| Mechanical data | | |
|--|---|--|
| Material | EPDM/X; FKM; NBR; PA; PBT; PC; stainless steel (1.4301 / 304) | |
| Materials (wetted parts) | stainless steel (1.4305 / 303); ceramics; FKM | |
| Min. pressure cycles | 100 million | |
| Process connection | threaded connection 1/4" NPT external thread | |
| Displays / operating elements | | |
| Display | Switching status | LED, yellow |
| | Measured values | 10 x LED, green Resolution 10 % of the final value |
| Remarks | | |
| Pack quantity | 1 pcs. | |
| Electrical connection | | |
| Connector: 1 x M12; coding: A; Contacts: gold-plated | | |
|  | | |
| Connection | | |
|  | | |