



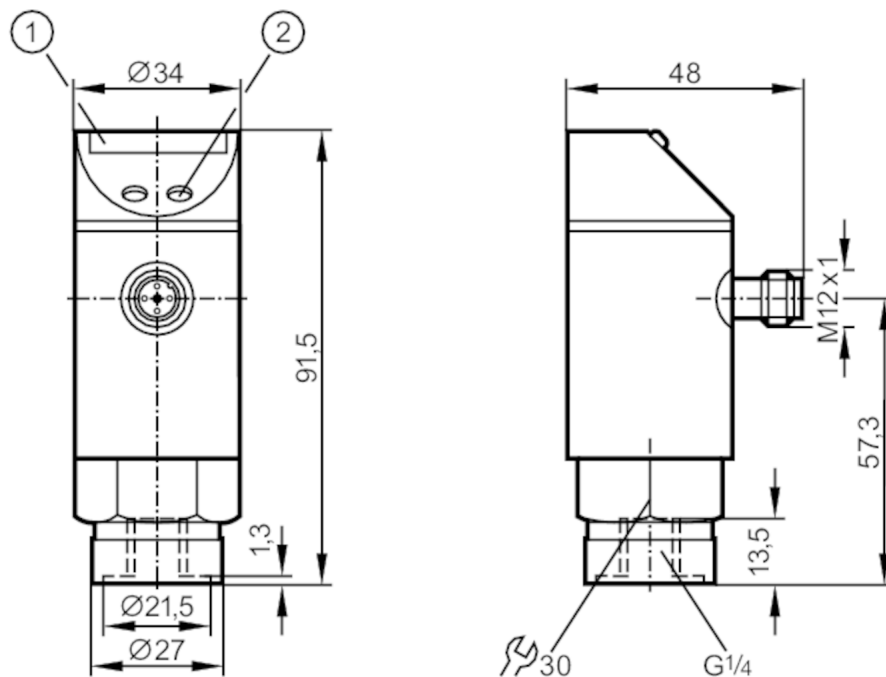
## Pressure sensor with LED bar display

PB-250MSBR14-HFNKG/US/ IV

Article no longer available - archive entry

Alternative articles: PN7001

When selecting an alternative article and accessories please note that technical data may differ!



- 1 LED display  
2 Programming button



## Product characteristics

Number of inputs and outputs	Number of digital outputs: 1
Measuring range [MPa]	0...25
Process connection	threaded connection G 1/4 Internal thread

## Application

System	gold-plated contacts
Application	for industrial applications
Media	liquids and gases
Conditionally suitable for	For gaseous media the application is limited to max. 25 bar.
Medium temperature [°C]	-25...80
Min. bursting pressure [MPa]	85
Pressure rating [Mpa]	40
Type of pressure	relative pressure

## Electrical data

Operating voltage [V]	18...30 DC
Current consumption [mA]	< 50
Min. insulation resistance [MΩ]	100; (500 V DC)



## Pressure sensor with LED bar display

PB-250MSBR14-HFNKG/US/ IV

Protection class	III	
Reverse polarity protection	yes	
Power-on delay time [s]	0.2	
Integrated watchdog	yes	
Inputs / outputs		
Number of inputs and outputs	Number of digital outputs: 1	
Outputs		
Total number of outputs	1	
Output signal	switching signal	
Electrical design	NPN	
Number of digital outputs	1	
Output function	normally open / closed; (configurable)	
Max. voltage drop switching output DC [V]	2	
Permanent current rating of switching output DC [mA]	250	
Switching frequency DC [Hz]	10	
Short-circuit protection	yes	
Type of short-circuit protection	yes (non-latching)	
Overload protection	yes	
Measuring/setting range		
Measuring range [MPa]	0...25	
Set point SP [MPa]	1.25...25	
Reset point rP [MPa]	0.75...24.5	
In steps of [MPa]	0.25	
Note on hysteresis	adjustable	
Accuracy / deviations		
Switch point accuracy [% of the final value]	< ± 2,0	
Repeatability [% of the final value]	< ± 0,25; (with temperature fluctuations < 10 K)	
Temperature drift per 10 K	< ± 0.3	
Software / programming		
Adjustment of the switch point	Programming button	
Operating conditions		
Ambient temperature [°C]	-25...80	
Storage temperature [°C]	-40...100	
Protection	IP 67	
Tests / approvals		
EMC	EN 61000-4-2 ESD	4 kV CD / 8 kV AD
	EN 61000-4-3 HF radiated	10 V/m
	EN 61000-4-4 Burst	2 kV
	EN 61000-4-6 HF conducted	10 V

PB0021



Pressure sensor with LED bar display

PB-250MSBR14-HFNKG/US/ IV

Shock resistance	DIN IEC 68-2-27	50 g (11 ms)
Vibration resistance	DIN IEC 68-2-6	20 g (10...2000 Hz)

Mechanical data

Material	EPDM/X; FKM; NBR; PA; PBT; PC; stainless steel (1.4301 / 304)	
Materials (wetted parts)	stainless steel (1.4305 / 303); ceramics; FKM	
Min. pressure cycles	100 million	
Process connection	threaded connection G 1/4 Internal thread	
Restrictor element integrated	no (can be retrofitted)	

Displays / operating elements

Display	Switching status	LED, yellow
	Measured values	10 x LED, green Resolution 10 % of the final value

Remarks

Pack quantity	1 pcs.
---------------	--------

Electrical connection

Connector: 1 x M12; coding: A; Contacts: gold-plated



Connection

