



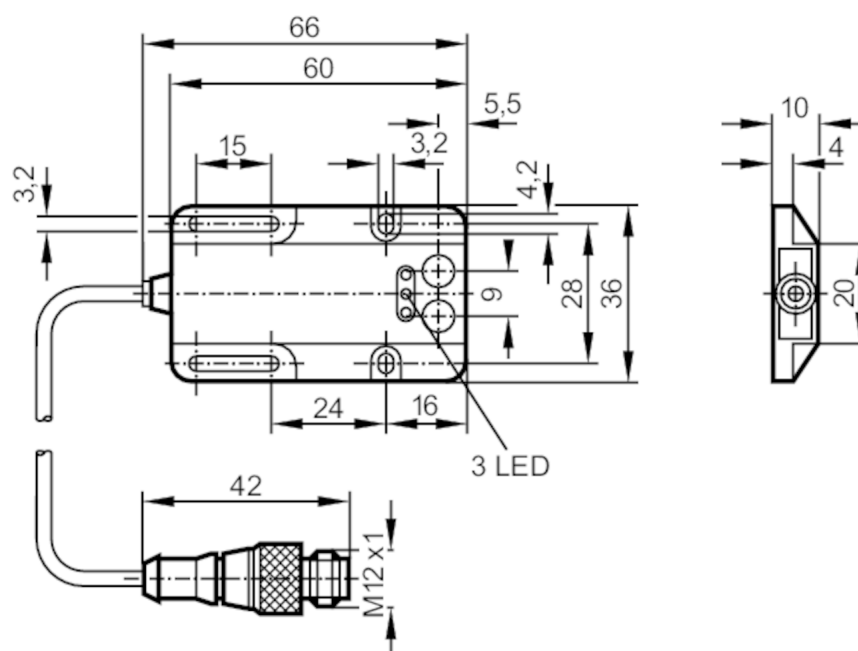
Through-beam sensor transmitter

OWS-OKG/0,1M/US

Article no longer available - archive entry

Alternative articles: OJ5065

When selecting an alternative article and accessories please note that technical data may differ!



transmitter in lower lens

Product characteristics

Type of light	red light
Housing	rectangular

Application

Function principle	Through-beam sensor
--------------------	---------------------

Electrical data

Operating voltage	[V]	10...36 DC
Current consumption	[mA]	15; ((36 V))
Reverse polarity protection		yes
Type of light		red light
Wave length	[nm]	660

Outputs

Overload protection	yes
---------------------	-----

Monitoring range

Transmitter / receiver	transmitter
Range [m]	< 4
Max. light spot diameter [mm]	320
Light spot dimensions refer to	at maximum range

Operating conditions

Ambient temperature	[°C]	-25...60
Protection		IP 67

OW1013



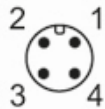
Through-beam sensor transmitter

OWS-00KG/0,1M/US

Tests / approvals		
EMC	EN 60947-5-2	
	EN 55011	class B
Mechanical data		
Weight	[g]	0.026
Housing		rectangular
Dimensions	[mm]	36 x 60 x 10
Material		ABS reinforced glass-fiber
Lens material		PMMA
Displays / operating elements		
Display	Power	1 x LED, green
Remarks		
Pack quantity		1 pcs.

Electrical connection	
Cable: 0.1 m, PVC	

Connector: 1 x M12; coding: A



Connection