



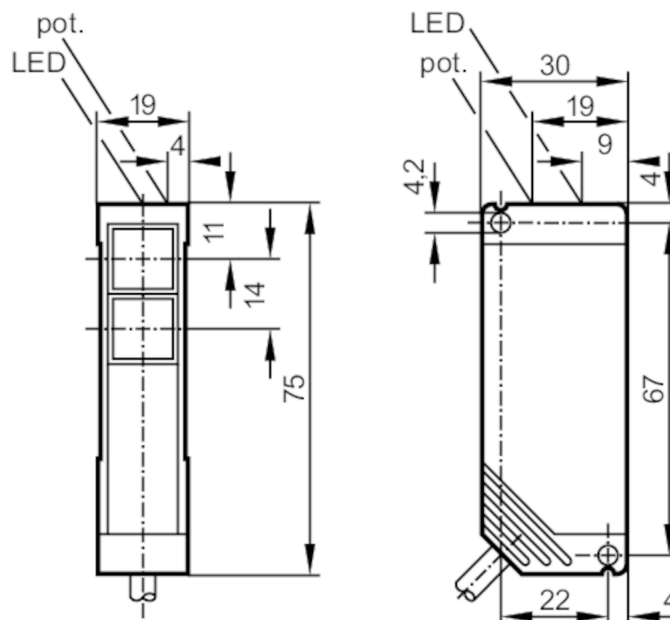
Through-beam sensor receiver

OTE-FPKG/6M

Article no longer available - archive entry

Alternative articles: OT5009

When selecting an alternative article and accessories please note that technical data may differ!



1 potentiometer
Receiver in lower lens



Product characteristics

Type of light	Infrared light
Housing	rectangular

Application

Function principle	Through-beam sensor
--------------------	---------------------

Electrical data

Operating voltage	[V]	10...55 DC
Current consumption	[mA]	30; ((24 V))
Protection class		II
Reverse polarity protection		yes
Type of light		Infrared light
Wave length	[nm]	880

Outputs

Electrical design		PNP
Output function		light-on/dark-on mode; (configurable)
Max. voltage drop switching output DC	[V]	2.5
Permanent current rating of switching output DC	[mA]	250
Switching frequency DC	[Hz]	150



Through-beam sensor receiver

OTE-FPKG/6M

Short-circuit protection	yes
Type of short-circuit protection	yes (non-latching)
Overload protection	yes

Monitoring range

Transmitter / receiver	receiver
Range [m]	< 10
Range adjustable	yes

Operating conditions

Ambient temperature [°C]	-25...60
Protection	IP 67

Tests / approvals

EMC	EN 60947-5-2	
	EN 55011	class B

Mechanical data

Housing	rectangular
Dimensions [mm]	75 x 19 x 30
Material	PBT
Lens material	PMMA

Displays / operating elements

Display	Switching status	1 x LED, yellow
	Power	1 x LED, green

Accessories

Items supplied	Angle bracket: 1, E20441
	screwdrivers

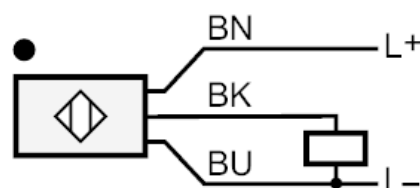
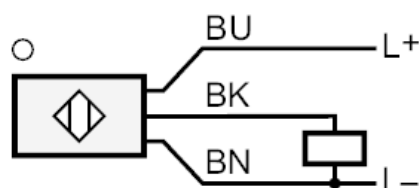
Remarks

Pack quantity	1 pcs.
---------------	--------

Electrical connection

Cable: 6 m, PVC; 3 x 0.34 mm²

Connection



Core colors :

BN = brown

BU = blue

BK = black



Through-beam sensor receiver

OTE-FPKG/6M

Diagrams and graphs

excess gain graph

