



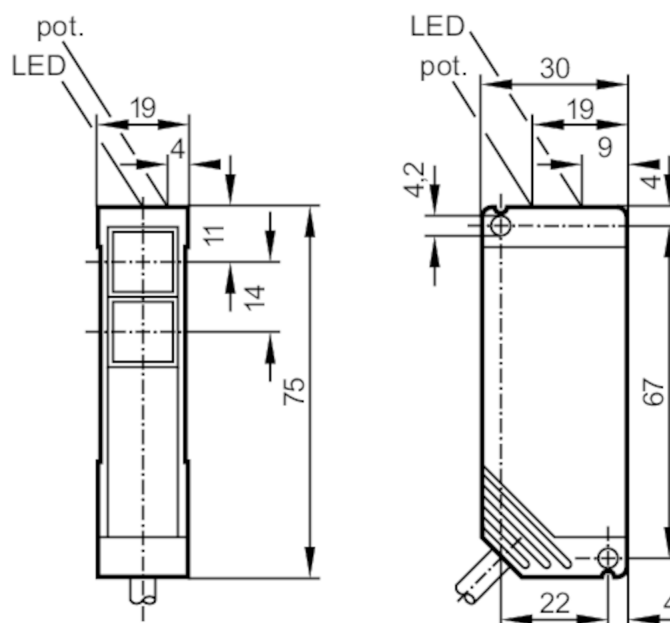
## Through-beam sensor receiver

OTE-FNKG

Article no longer available - archive entry

Alternative articles: O5E502

When selecting an alternative article and accessories please note that technical data may differ!



1 potentiometer  
Receiver in lower lens

## Product characteristics

Type of light	Infrared light
Housing	rectangular

## Application

Function principle	Through-beam sensor
--------------------	---------------------

## Electrical data

Operating voltage	[V]	10...55 DC
Current consumption	[mA]	30; ((24 V))
Protection class		II
Reverse polarity protection		yes
Type of light		Infrared light
Wave length	[nm]	880

## Outputs

Electrical design		NPN
Output function		light-on/dark-on mode; (configurable)
Max. voltage drop switching output DC	[V]	2.5
Permanent current rating of switching output DC	[mA]	250
Switching frequency DC	[Hz]	150
Short-circuit protection		yes



## Through-beam sensor receiver

OTE-FNKG

Type of short-circuit protection	yes (non-latching)
Overload protection	yes

## Monitoring range

Transmitter / receiver	receiver
Range [m]	< 10
Range adjustable	yes

## Operating conditions

Ambient temperature [°C]	-25...60
Protection	IP 67

## Tests / approvals

EMC	EN 60947-5-2	
	EN 55011	class B

## Mechanical data

Weight [g]	0.201
Housing	rectangular
Dimensions [mm]	75 x 19 x 30
Material	PBT
Lens material	PMMA

## Displays / operating elements

Display	Switching status	1 x LED, yellow
	Power	1 x LED, green

## Accessories

Items supplied	Angle bracket: 1, E20441
	screwdrivers

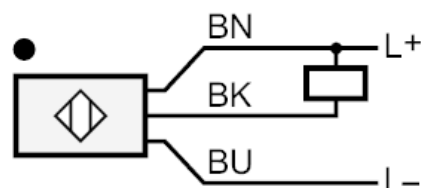
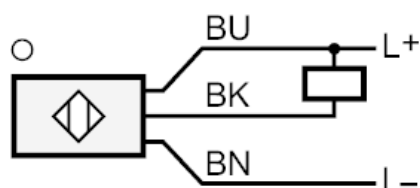
## Remarks

Pack quantity	1 pcs.
---------------	--------

## Electrical connection

Cable: 2 m, PVC; 3 x 0.34 mm<sup>2</sup>

## Connection



Core colors :  
 BN = brown  
 BU = blue  
 BK = black



## Through-beam sensor receiver

OTE-FNKG

## Diagrams and graphs

excess gain graph

