

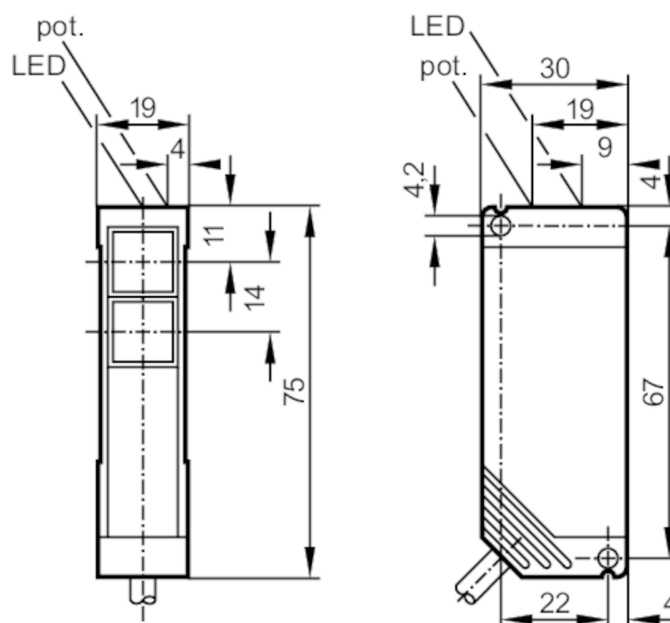
## Through-beam sensor transmitter

OTS-00KG

Article no longer available - archive entry

Alternative articles: O5S501

When selecting an alternative article and accessories please note that technical data may differ!



- 1 potentiometer  
one transmitting diode in upper and lower lens

## Product characteristics

|               |                |
|---------------|----------------|
| Type of light | Infrared light |
| Housing       | rectangular    |

## Application

|                    |                     |
|--------------------|---------------------|
| Function principle | Through-beam sensor |
|--------------------|---------------------|

## Electrical data

|                             |      |                |
|-----------------------------|------|----------------|
| Operating voltage           | [V]  | 10...55 DC     |
| Current consumption         | [mA] | 20; ((24 V))   |
| Protection class            |      | II             |
| Reverse polarity protection |      | yes            |
| Type of light               |      | Infrared light |
| Wave length                 | [nm] | 880            |

## Outputs

|                                  |                    |
|----------------------------------|--------------------|
| Short-circuit protection         | yes                |
| Type of short-circuit protection | yes (non-latching) |
| Overload protection              | yes                |

## Monitoring range

|                        |             |
|------------------------|-------------|
| Transmitter / receiver | transmitter |
| Range [m]              | < 10        |
| Range adjustable       | no          |

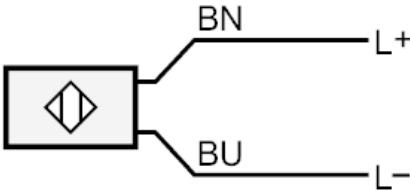
# OT5005



## Through-beam sensor transmitter

OTS-00KG

|   |              |  |
|---|--------------|--|
| Max. light spot diameter                  | [mm]         | 524                                      |
| Light spot dimensions refer to            |              | at maximum range                         |
| Operating conditions                      |              |  |
| Ambient temperature                       | [°C]         | -25...60                                 |
| Protection                                |              | IP 67                                    |
| Tests / approvals                         |              |  |
| EMC                                       | EN 60947-5-2 |  |
| Mechanical data                           |              |  |
| Weight                                    | [g]          | 0.188                                    |
| Housing                                   |              | rectangular                              |
| Dimensions                                | [mm]         | 75 x 19 x 30                             |
| Material                                  |              | PBT                                      |
| Lens material                             |              | PMMA                                     |
| Displays / operating elements             |              |  |
| Display                                   | Power        | 1 x LED, green                           |
| Accessories                               |              |  |
| Items supplied                            |              | Angle bracket: 1, E20441<br>screwdrivers |
| Remarks                                   |              |  |
| Pack quantity                             |              | 1 pcs.                                   |
| Electrical connection                     |              |  |
| Cable: 2 m, PVC; 2 x 0.34 mm <sup>2</sup> |              |  |
| Connection                                |              |  |



BN = Core colors : brown  
BU = blue