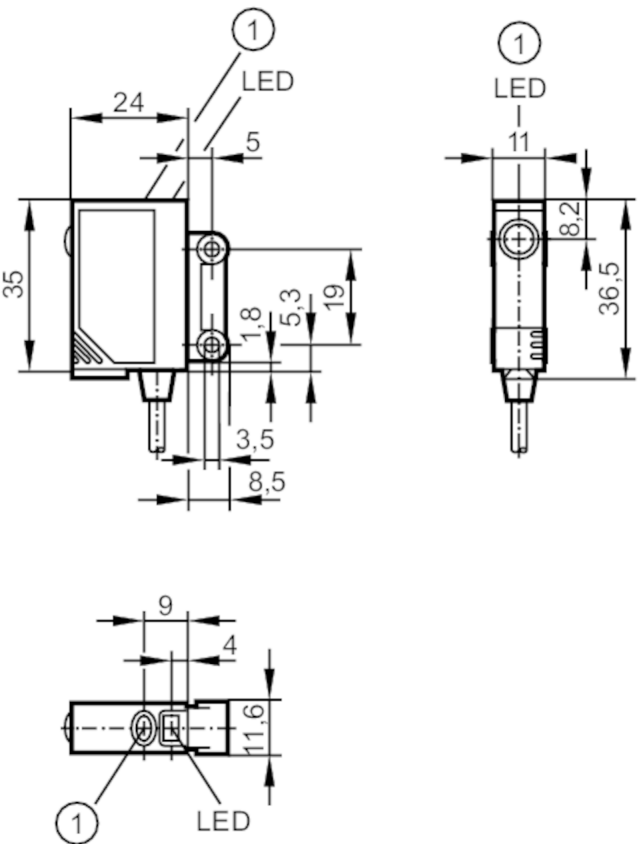




Through-beam sensor receiver

OJE-FPKG/SO

Article no longer available - archive entry



1 pushbutton

Product characteristics

| | |
|---------|-------------|
| Housing | rectangular |
|---------|-------------|

Application

| | |
|--------------------|---------------------|
| Function principle | Through-beam sensor |
|--------------------|---------------------|

Electrical data

| | | |
|-----------------------------|------|------------|
| Operating voltage | [V] | 10...30 DC |
| Current consumption | [mA] | < 12 |
| Protection class | | II |
| Reverse polarity protection | | yes |

Outputs

| | | |
|---|------|---------------------------------------|
| Electrical design | | PNP |
| Output function | | light-on/dark-on mode; (configurable) |
| Max. voltage drop switching output DC | [V] | 2.5 |
| Permanent current rating of switching output DC | [mA] | 200 |
| Switching frequency DC | [Hz] | 1200 |
| Short-circuit protection | | yes |
| Type of short-circuit protection | | yes (non-latching) |



Through-beam sensor receiver

OJE-FPKG/SO

| | | |
|-------------------------------|--|-----------------|
| Overload protection | yes | |
| Monitoring range | | |
| Transmitter / receiver | receiver | |
| Range [m] | < 10 | |
| Range adjustable | yes | |
| Operating conditions | | |
| Ambient temperature [°C] | -25...60 | |
| Protection | IP 67 | |
| Tests / approvals | | |
| EMC | EN 60947-5-2 | |
| Mechanical data | | |
| Housing | rectangular | |
| Dimensions [mm] | 35 x 11 x 24 | |
| Material | housing: ABS; LED window: SEPS; pushbutton: SEPS | |
| Lens material | glass | |
| Lens alignment | Side sensing | |
| Displays / operating elements | | |
| Display | Switching status | 1 x LED, yellow |
| | Power | 1 x LED, green |
| | Function | 1 x LED, red |
| Electronic lock | yes | |
| Accessories | | |
| Items supplied | screws: 2 | |
| | spring washers: 2 | |
| | Nuts: 2 | |
| Remarks | | |
| Remarks | cULus - Class 2 source required | |
| Pack quantity | 1 pcs. | |



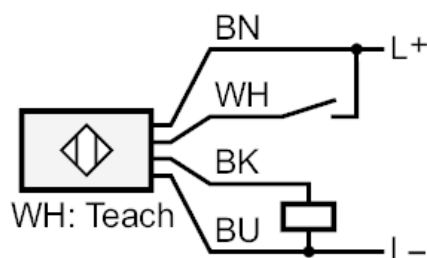
Through-beam sensor receiver

OJE-FPKG/SO

Electrical connection

Cable: 2 m, PVC; 4 x 0.14 mm²

Connection



| | |
|------|---------------|
| | Core colors : |
| BK = | black |
| BN = | brown |
| BU = | blue |
| WH = | white |

Diagrams and graphs

excess gain graph

