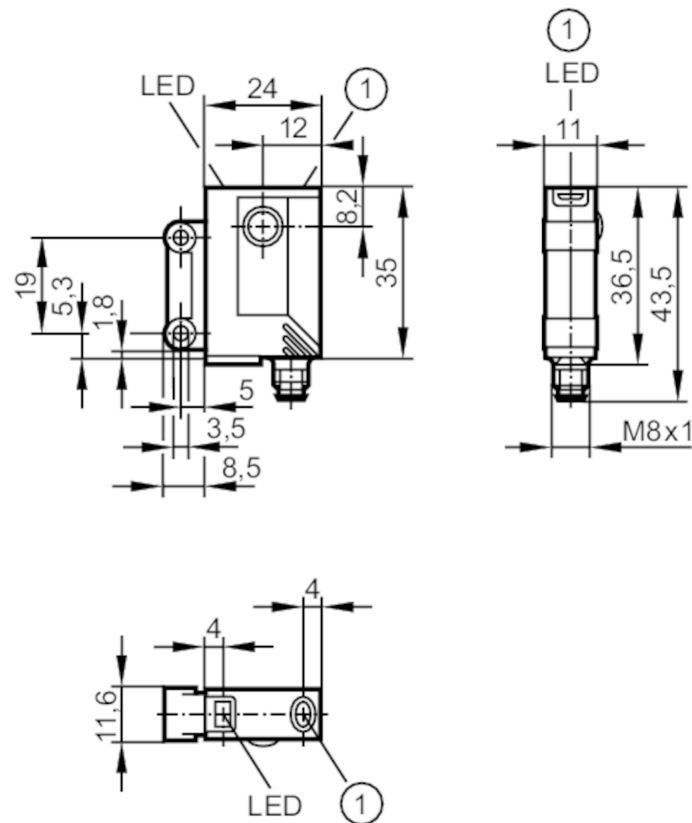




Through-beam sensor receiver

OJE-FPKG/FO/AS



1 pushbutton



Product characteristics		
Type of light		red light
Housing		rectangular
Application		
Function principle		Through-beam sensor
Electrical data		
Operating voltage	[V]	10...30 DC
Current consumption	[mA]	< 12
Protection class		III
Reverse polarity protection		yes
Type of light		red light
Wave length	[nm]	660
Outputs		
Electrical design		PNP
Output function		light-on/dark-on mode; (programmable)
Max. voltage drop switching output DC	[V]	2.5
Permanent current rating of switching output DC	[mA]	200



Through-beam sensor receiver

OJE-FPKG/FO/AS

Switching frequency DC	[Hz]	1200
Short-circuit protection		yes
Type of short-circuit protection		yes (non-latching)
Overload protection		yes

Monitoring range

Transmitter / receiver		receiver
Range	[m]	< 10
Range adjustable		yes

Operating conditions

Ambient temperature	[°C]	-25...60
Protection		IP 67

Tests / approvals

EMC	EN 60947-5-2	
MTTF	[years]	968

Mechanical data

Weight	[g]	27
Housing		rectangular
Dimensions	[mm]	35 x 24 x 11
Material		housing: ABS; fixture: diecast zinc; LED window: SEPS; pushbutton: SEPS
Lens material		glass
Lens alignment		Front sensing

Displays / operating elements

Display	Switching status	1 x LED, yellow
	Power	1 x LED, green
	Function	1 x LED, red
Electronic lock		yes

Accessories

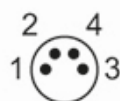
Items supplied	Basic clip: 1, E20964
	screws: 2 x M3 x 16
	spring washers: 2
	Nuts: 2

Remarks

Remarks	cULus - Class 2 source required
Pack quantity	1 pcs.

Electrical connection

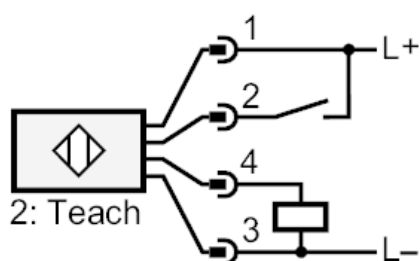
Connector: 1 x M8; coding: A



Through-beam sensor receiver

OJE-FPKG/FO/AS

Connection



2 Teach

Diagrams and graphs

excess gain graph

