



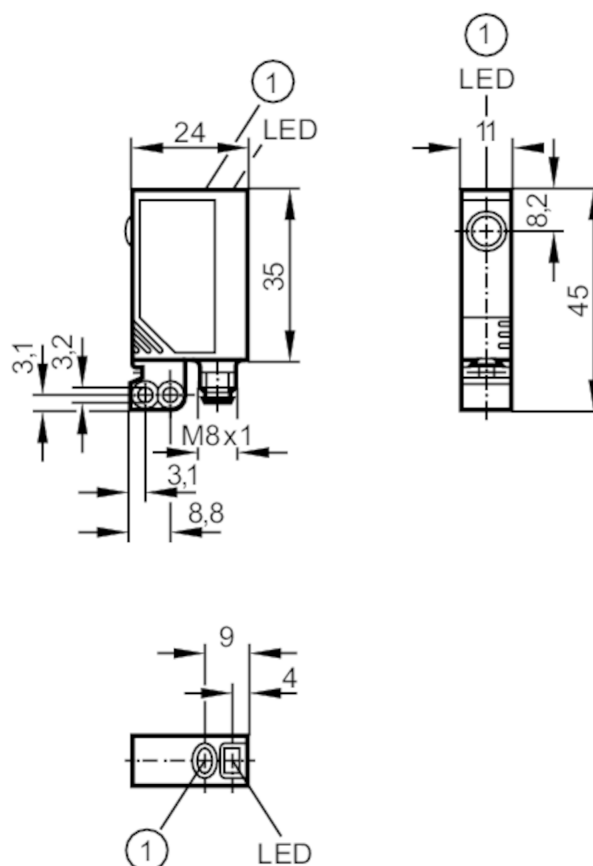
Through-beam sensor transmitter

OJSLOOKG/SO/AS

Article no longer available - archive entry

Alternative articles: OJ5041

When selecting an alternative article and accessories please note that technical data may differ!



1 pushbutton

Product characteristics

Type of light	red light
Laser protection class	1
Housing	rectangular

Application

Function principle	Through-beam sensor
--------------------	---------------------

Electrical data

Operating voltage [V]	10...30 DC
Current consumption [mA]	< 12
Protection class	III
Reverse polarity protection	yes
Type of light	red light
Wave length [nm]	650
Typ. lifetime [h]	50000



Through-beam sensor transmitter

OJSLOOKG/SO/AS

Outputs		
Overload protection		yes
Monitoring range		
Transmitter / receiver		transmitter
Range [m]		< 0.5
Range adjustable		no
Diameter of the smallest detectable object [mm]		0.8
Max. light spot diameter [mm]		2
Light spot dimensions refer to		at maximum range
Operating conditions		
Ambient temperature [°C]		-10...60
Protection		IP 67
Tests / approvals		
EMC	EN 60947-5-2	
Laser protection class		1
Notes on laser protection	Caution:	Laser light
	laser class:	1
		EN / IEC60825-1:2007
		EN / IEC60825-1:2014
		Complies with 21 CFR 1040 except for deviations pursuant to Laser Notice No. 50, dated June 2007.
Mechanical data		
Weight [g]		0.055
Housing		rectangular
Dimensions [mm]		35 x 11 x 24
Material	housing: ABS; fixture: diecast zinc; LED window: SEPS; pushbutton: SEPS	
Lens material		glass
Lens alignment		Side sensing
Displays / operating elements		
Display	Power	1 x LED, green
Accessories		
Items supplied		Basic clip: 1, E20964
		screws: 2 x M3 x 16
		spring washers: 2
		Nuts: 2
Remarks		
Remarks		cULus - Class 2 source required
Pack quantity		1 pcs.

OJ5072

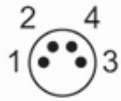


Through-beam sensor transmitter

OJSLOOKG/SO/AS

Electrical connection

Connector: 1 x M8; coding: A



Connection

