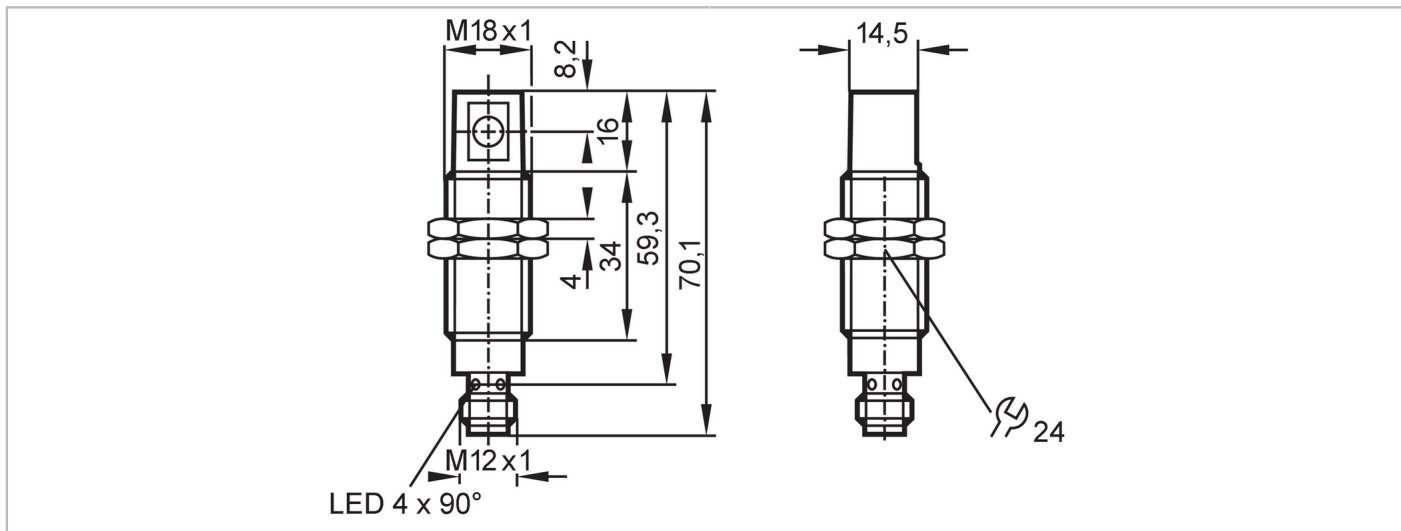


OG5127



Through-beam sensor receiver

OGE-HPKG/US/90°



Product characteristics

Type of light	red light
Housing	Threaded type

Application

Function principle	Through-beam sensor
Application	Industrial applications

Electrical data

Operating voltage	[V]	10...30 DC; (cULus - Class 2 source required)
Current consumption	[mA]	< 12
Protection class		II
Reverse polarity protection		yes
Type of light		red light
Wave length	[nm]	660

Outputs

Electrical design		PNP
Output function		light-on mode
Max. voltage drop switching output DC	[V]	2.5
Permanent current rating of switching output DC	[mA]	200
Switching frequency DC	[Hz]	500
Short-circuit protection		yes
Type of short-circuit protection		yes (non-latching)
Overload protection		yes

Monitoring range


Transmitter / receiver		receiver
Range	[m]	< 9
Range adjustable		no

OG5127



Through-beam sensor receiver

OGE-HPKG/US/90°

Operating conditions		
Ambient temperature	[°C]	-25...60
Protection		IP 68
Tests / approvals		
EMC	EN 60947-5-2	
	EN 55011	class B
MTTF	[years]	953
Mechanical data		
Weight	[g]	58.7
Housing		Threaded type
Dimensions	[mm]	M18 x 1 / L = 59.3
Thread designation		M18 x 1
Material		housing: stainless steel; cover: ABS
Lens material		front lens:PMMA
Displays / operating elements		
Display	Switching status	1 x LED, yellow
	Power	1 x LED, green
Accessories		
Items supplied		Nuts: 2
		lock washers: 2
Remarks		
Pack quantity		1 pcs.
Electrical connection		
Connector: 1 x M12; coding: A; Contacts: 4		
		

Connection

