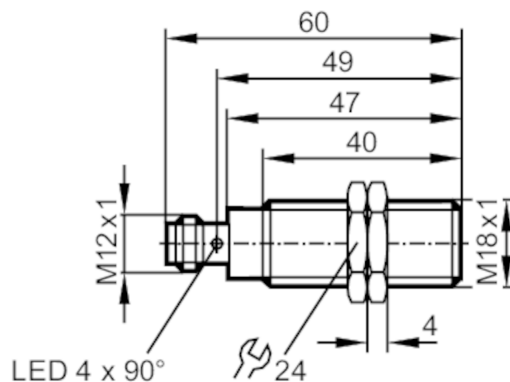




Through-beam sensor transmitter

OGS-00KG/US100



Product characteristics

Type of light	red light
Housing	Threaded type

Application

Function principle	Through-beam sensor
--------------------	---------------------

Electrical data

Operating voltage [V]	10...36 DC
Current consumption [mA]	15
Protection class	II
Reverse polarity protection	yes
Type of light	red light
Wave length [nm]	624

Monitoring range

Transmitter / receiver	transmitter
Range [m]	< 20
Range adjustable	no
Max. light spot diameter [mm]	800
Light spot dimensions refer to	at maximum range

Operating conditions

Ambient temperature [°C]	-25...60
Protection	IP 67

Tests / approvals

EMC	EN 60947-5-2
MTTF [years]	755

Mechanical data

Weight [g]	49.1
Housing	Threaded type
Dimensions [mm]	M18 x 1 / L = 60
Thread designation	M18 x 1

OGS200



Through-beam sensor transmitter

OGS-00KG/US100

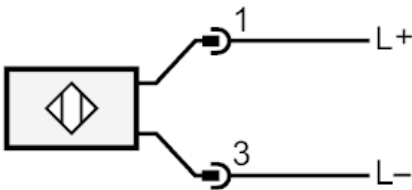
Material	housing: stainless steel (1.4404 / 316L)	
Lens material	PMMA	
Displays / operating elements		
Display	Power	1 x LED, green
Accessories		
Items supplied	lock nuts: 2	
Remarks		
Remarks	cULus - Class 2 source required	
Pack quantity	1 pcs.	

Electrical connection

Connector: 1 x M12; coding: A



Connection





Through-beam sensor transmitter

OGS-00KG/US100

Diagrams and graphs

excess gain graph

