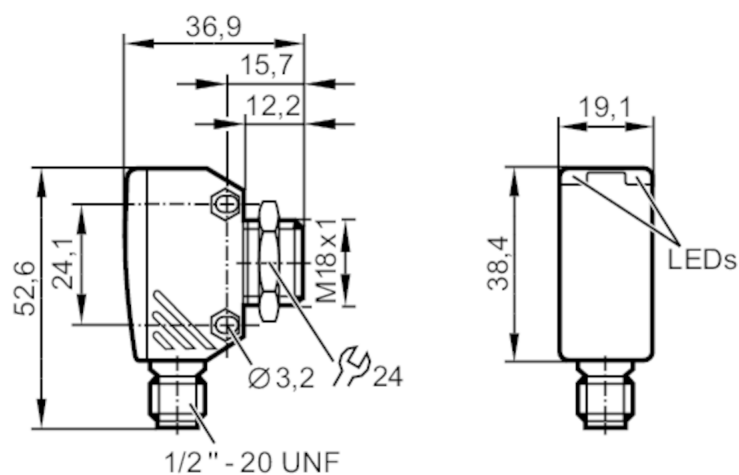




Through-beam sensor transmitter

OGS-000W/LS/CUBE

Article no longer available - archive entry



Product characteristics

Type of light	red light
Housing	rectangular with M18 thread

Application

Function principle	Through-beam sensor
--------------------	---------------------

Electrical data

Frequency AC	[Hz]	47...60
Operating voltage	[V]	20...250 AC
Current consumption	[mA]	< 5
Protection class		II; (double insulated)
Type of light		red light
Wave length	[nm]	633

Monitoring range

Transmitter / receiver		transmitter
Range	[m]	< 20
Range adjustable		no
Max. light spot diameter	[mm]	800
Light spot dimensions refer to		at maximum range

Operating conditions

Ambient temperature	[°C]	-25...60
Protection		IP 67

Tests / approvals

EMC	EN 60947-5-2	
	EN 55011 emission	class B

Mechanical data

Weight	[g]	59.5
--------	-----	------



Through-beam sensor transmitter

OGS-000W/LS/CUBE

Housing	rectangular with M18 thread
Dimensions [mm]	52.6 x 19.1 x 36.9
Thread designation	M18 x 1
Material	diecast zinc; PEI
Lens material	PMMA
Lens alignment	Side sensing

Displays / operating elements

Display	Power	1 x LED, green
---------	-------	----------------

Electrical connection

Required protection	miniature fuse to IEC60127-2 sheet 1; ≤ 2 A; fast acting
---------------------	---

Accessories

Items supplied	lock nut: 1
----------------	-------------

Remarks

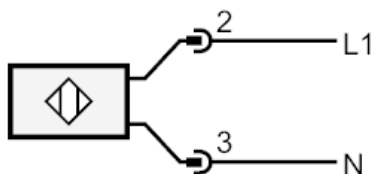
Pack quantity	1 pcs.
---------------	--------

Electrical connection

Connector: 1 x 1/2"; coding: C



Connection

Note : miniature fuse to IEC60127-2 sheet 1 ≤ 2 A fast acting