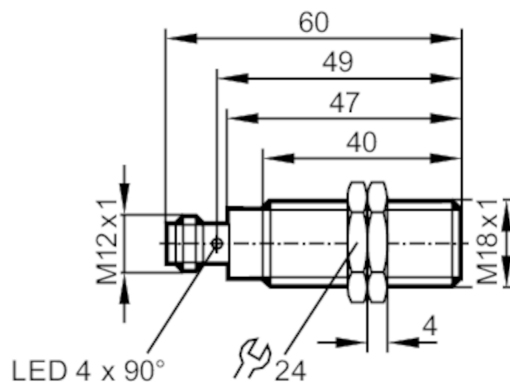


# OGE301



## Through-beam sensor receiver

OGE-HPKG/US100



### Product characteristics

Type of light	red light
Housing	Threaded type

### Application

Function principle	Through-beam sensor
--------------------	---------------------

### Electrical data

Operating voltage	[V]	10...36 DC
Current consumption	[mA]	10
Protection class		II
Reverse polarity protection		yes
Type of light		red light
Wave length	[nm]	624

### Outputs

Electrical design		PNP
Output function		light-on mode
Max. voltage drop switching output DC	[V]	2.5
Permanent current rating of switching output DC	[mA]	150; (200 (...60 °C))
Switching frequency DC	[Hz]	1000
Short-circuit protection		yes
Type of short-circuit protection		yes (non-latching)
Overload protection		yes

### Monitoring range

Transmitter / receiver		receiver
Range	[m]	< 20
Range adjustable		no

### Operating conditions

Ambient temperature	[°C]	-25...80
---------------------	------	----------

# OGE301



## Through-beam sensor receiver

OGE-HPKG/US100

Protection	IP 65; IP 67; IP 68; IP 69K
------------	-----------------------------

### Tests / approvals

EMC	EN 60947-5-2	
MTTF [years]		1067

### Mechanical data

Weight [g]	60.1
Housing	Threaded type
Dimensions [mm]	M18 x 1 / L = 60
Thread designation	M18 x 1
Material	housing: stainless steel (1.4404 / 316L); sealing: EPDM
Lens material	PMMA

### Displays / operating elements

Display	Switching status	1 x LED, yellow
---------	------------------	-----------------

### Accessories

Items supplied	lock nuts: 2
----------------	--------------

### Remarks

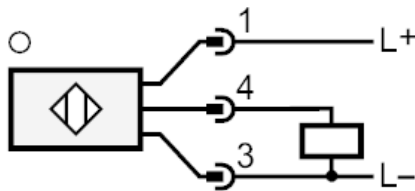
Remarks	cULus - Class 2 source required
Pack quantity	1 pcs.

### Electrical connection

Connector: 1 x M12; coding: A



### Connection





## Through-beam sensor receiver

OGE-HPKG/US100

### Diagrams and graphs

excess gain graph

