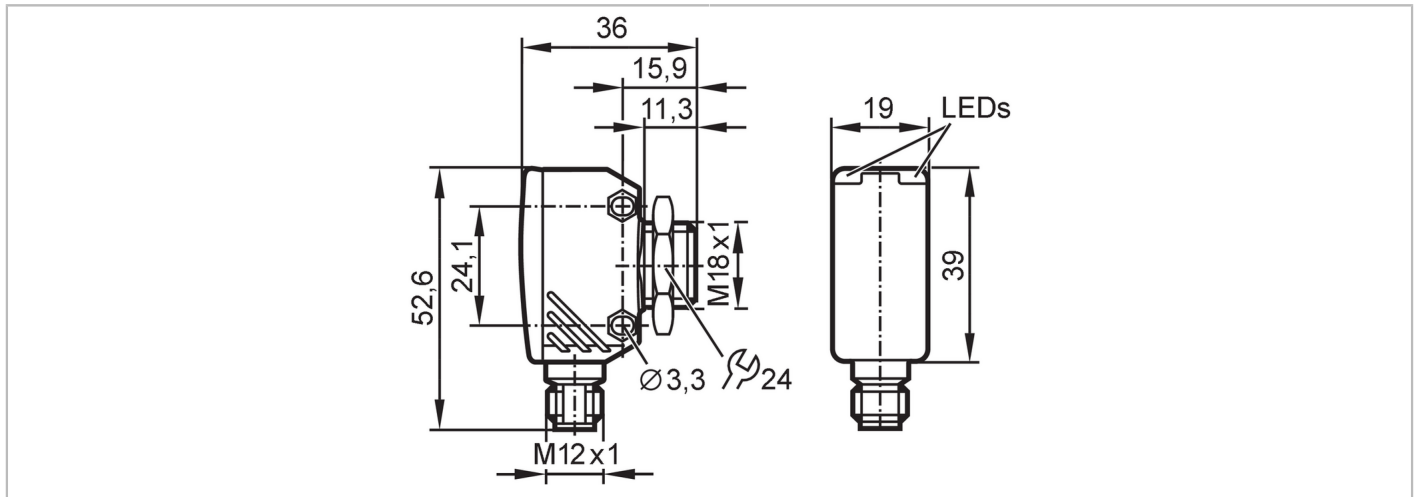


OGE282



Through-beam sensor receiver

OGE-DNKG/US/CUBE



Product characteristics	
Type of light	red light
Housing	rectangular with M18 thread
Application	
Function principle	Through-beam sensor
Electrical data	
Operating voltage [V]	10...30 DC
Current consumption [mA]	16
Protection class	III
Reverse polarity protection	yes
Type of light	red light
Wave length [nm]	662
Outputs	
Electrical design	NPN
Output function	dark-on mode
Max. voltage drop switching output DC [V]	2.5
Permanent current rating of switching output DC [mA]	200
Switching frequency DC [Hz]	1000
Short-circuit protection	yes
Type of short-circuit protection	yes (non-latching)
Overload protection	yes
Monitoring range	
Transmitter / receiver	receiver
Range [m]	< 20
Range adjustable	no
Interfaces	
Communication interface	IO-Link



Through-beam sensor receiver

OGE-DNKG/US/CUBE

Transmission type	COM2 (38,4 kBaud)	
IO-Link revision	1.1	
SDCI standard	IEC 61131-9	
Profiles	Smart Sensor - SSP 0	Generic Profiled Sensor
	Function	Device identification
	Function	Multiple switching signal
	Function	Device diagnosis
	Function	Teach channel
SIO mode	yes	
Required master port class	A	
Min. process cycle time [ms]	2.5	
IO-Link process data (cyclical)	Function	bit length
	device status	4
	binary switching information	1
IO-Link functions (acyclical)	application specific tag; operating hours counter; switching cycles counter	
Supported DeviceIDs	Type of operation	DeviceID
	default	1137
Note	For further information please see the IODD PDF file at "Downloads"	

Operating conditions

Ambient temperature [°C]	-25...60	
Storage temperature [°C]	-40...60	
Protection	IP 65; IP 67	

Tests / approvals

EMC	EN 60947-5-2	
MTTF [years]	961	
UL approval	Ta	-25...60 °C
	Enclosure type	Type 1
	voltage supply	Class 2
	File number UL	E174191

Mechanical data

Weight [g]	59.5	
Housing	rectangular with M18 thread	
Dimensions [mm]	52.6 x 19 x 36	
Thread designation	M18 x 1	
Material	housing: diecast zinc; rear of the housing: PEI	
Lens material	front lens:PMMA	
Lens alignment	Side sensing	

Displays / operating elements

Display	Switching status	1 x LED, yellow
	Power	1 x LED, green

Accessories

Items supplied	lock nut: 1	
----------------	-------------	--

Remarks

Remarks		
Pack quantity	1 pcs.	



Through-beam sensor receiver

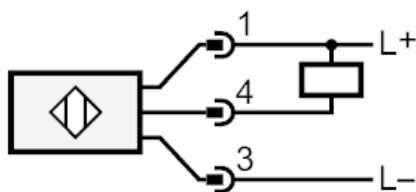
OGE-DNKG/US/CUBE

Electrical connection

Connector: 1 x M12; coding: A



Connection



4 OUT / IO-Link

Diagrams and graphs

excess gain graph

