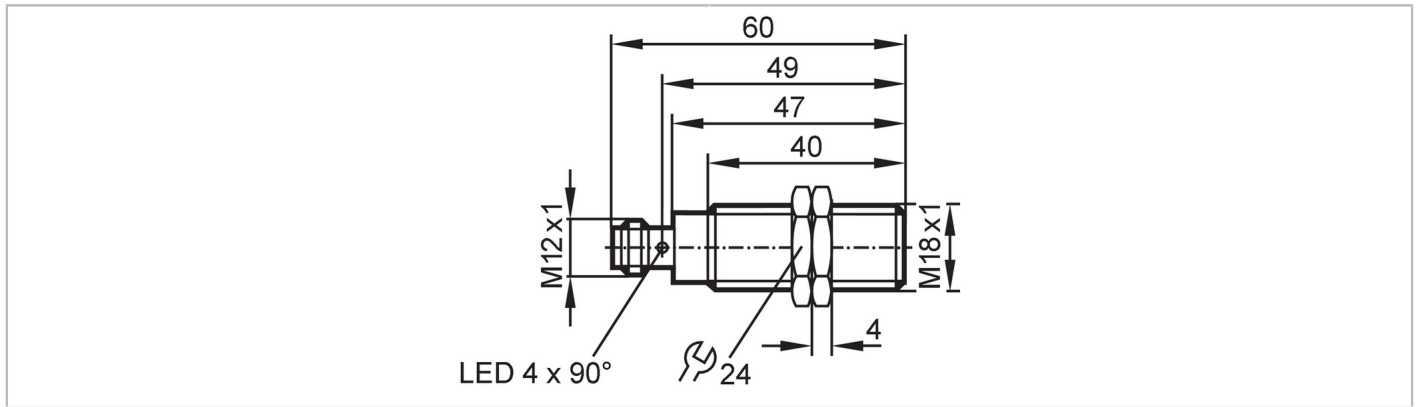


OGE200



Through-beam sensor receiver

OGE-DPKG/US100



Product characteristics		
Type of light		red light
Housing		Threaded type
Application		
Function principle		Through-beam sensor
Application		Industrial applications
Electrical data		
Operating voltage	[V]	10...36 DC
Current consumption	[mA]	10
Protection class		II
Reverse polarity protection		yes
Type of light		red light
Wave length	[nm]	624
Outputs		
Electrical design		PNP
Output function		dark-on mode
Max. voltage drop switching output DC	[V]	2.5
Permanent current rating of switching output DC	[mA]	200
Switching frequency DC	[Hz]	1000
Short-circuit protection		yes
Type of short-circuit protection		yes (non-latching)
Overload protection		yes
Monitoring range		
Transmitter / receiver		receiver
Range	[m]	< 20
Range adjustable		no
Operating conditions		
Ambient temperature	[°C]	-25...60
Protection		IP 67

OGE200



Through-beam sensor receiver

OGE-DPKG/US100

Tests / approvals

EMC	EN 60947-5-2	
MTTF [years]		1112

Mechanical data

Weight [g]	50.1
Housing	Threaded type
Dimensions [mm]	M18 x 1 / L = 60
Thread designation	M18 x 1
Material	housing: stainless steel (1.4404 / 316L)
Lens material	front lens:PMMA

Displays / operating elements

Display	Switching status	1 x LED, yellow
---------	------------------	-----------------

Accessories

Items supplied	lock nuts: 2
----------------	--------------

Remarks

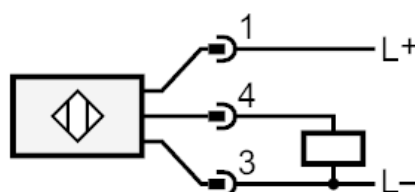
Remarks	cULus - Class 2 source required
Pack quantity	1 pcs.

Electrical connection

Connector: 1 x M12; coding: A; Contacts: 4



Connection





Through-beam sensor receiver

OGE-DPKG/US100

Diagrams and graphs

excess gain graph

