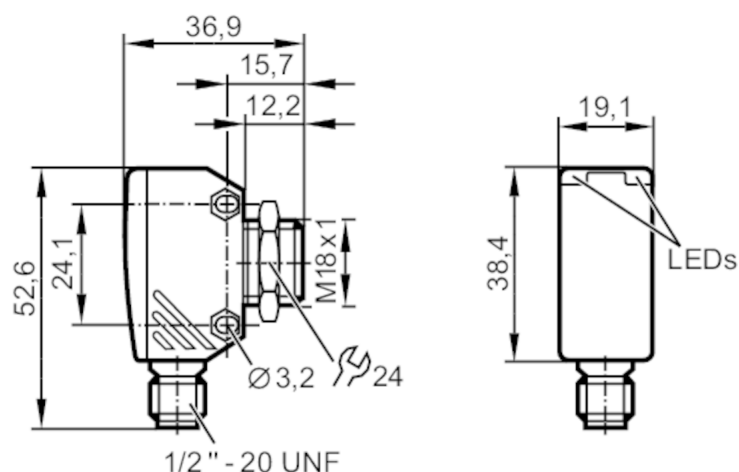




## Through-beam sensor receiver

OGE-DBOW/LS/CUBE

Article no longer available - archive entry



### Product characteristics

Type of light	red light
Housing	rectangular with M18 thread

### Application

Function principle	Through-beam sensor
--------------------	---------------------

### Electrical data

Frequency AC	[Hz]	47...63
Operating voltage	[V]	20...250 AC
Protection class		II; (double insulated)
Type of light		red light
Wave length	[nm]	633

### Outputs

Output function		dark-on mode
Max. voltage drop switching output AC	[V]	8
Minimum load current	[mA]	5
Max. leakage current	[mA]	1.7
Permanent current rating of switching output AC	[mA]	150; (200 (...40 °C))
Short-time current rating of switching output	[mA]	1200; (20 ms / 0,5 Hz)
Switching frequency AC	[Hz]	30
Short-circuit protection		no
Overload protection		no

### Monitoring range

Transmitter / receiver		receiver
Range	[m]	< 20



## Through-beam sensor receiver

OGE-DBOW/LS/CUBE

Range adjustable	no
------------------	----

## Operating conditions

Ambient temperature [°C]	-25...60
Protection	IP 67

## Tests / approvals

EMC	EN 60947-5-2	
	EN 55011 emission	class B

## Mechanical data

Weight [g]	61
Housing	rectangular with M18 thread
Dimensions [mm]	52.6 x 19.1 x 36.9
Thread designation	M18 x 1
Material	diecast zinc; PEI
Lens material	PMMA
Lens alignment	Side sensing

## Displays / operating elements

Display	Switching status	1 x LED, yellow
---------	------------------	-----------------

## Electrical connection

Required protection	miniature fuse to IEC60127-2 sheet 1; ≤ 2 A; fast acting
---------------------	--

## Accessories

Items supplied	lock nut: 1
----------------	-------------

## Remarks

Remarks	Do not connect without a load.
Pack quantity	1 pcs.

## Electrical connection

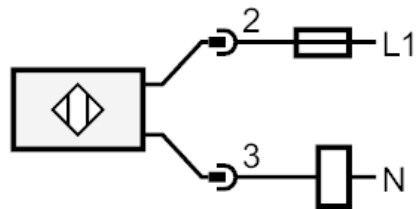
Connector: 1 x 1/2"; coding: C



## Through-beam sensor receiver

OGE-DBOW/LS/CUBE

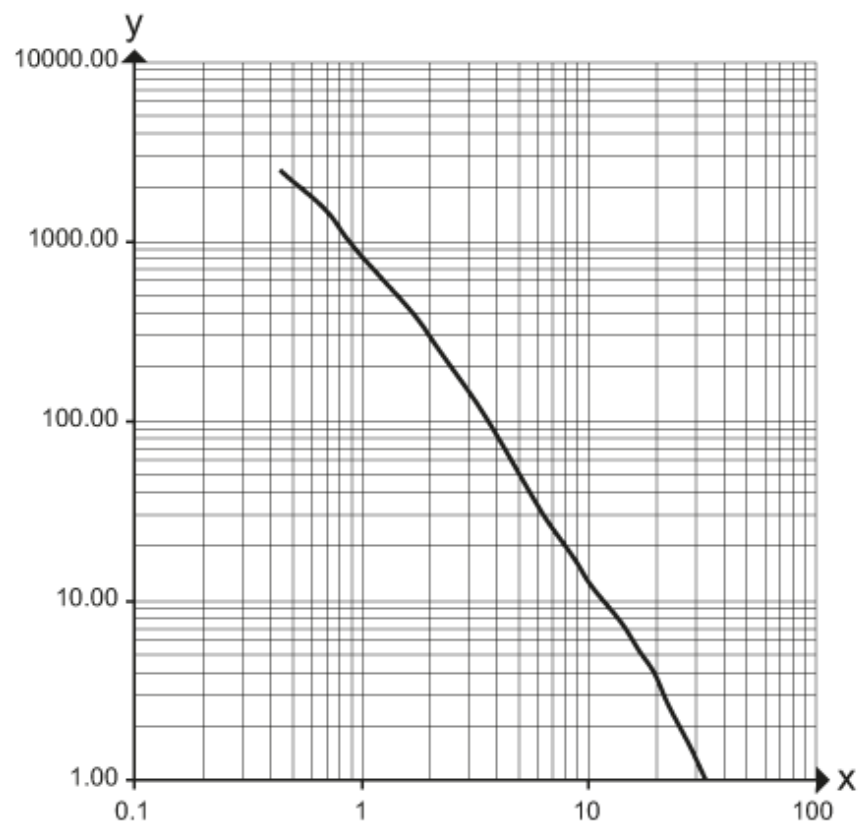
### Connection



Note : miniature fuse to IEC60127-2 sheet 1  $\leq 2$  A fast acting

### Diagrams and graphs

excess gain graph



x: Abstand [m]

y: Funktionsreservefaktor