

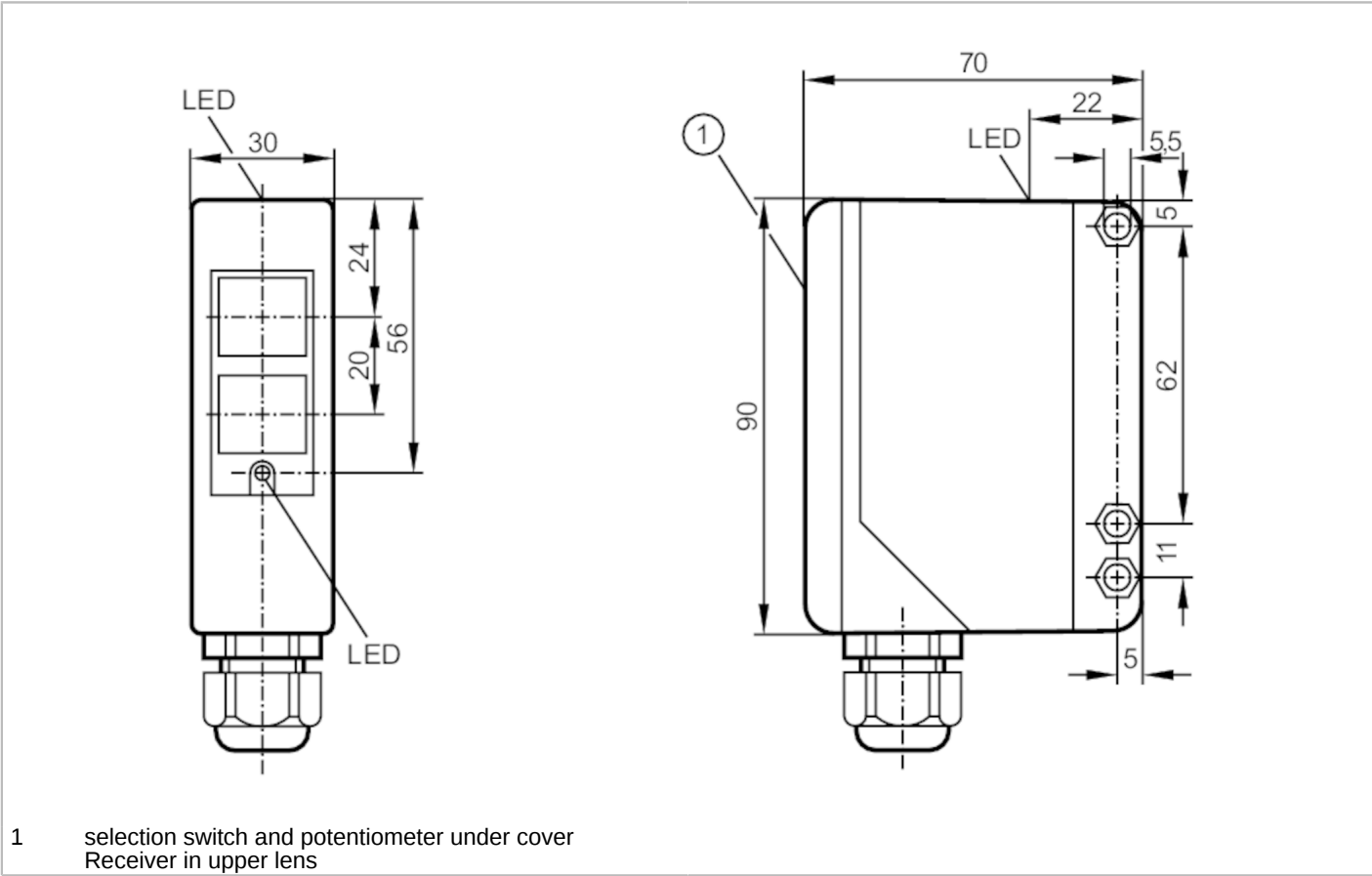


Through-beam sensor receiver

OAE-FKOA/O.MONTZU

Article no longer available - archive entry

Alternative articles: OA0102  
When selecting an alternative article and accessories please note that technical data may differ!



Product characteristics		
Type of light		Infrared light
Housing		rectangular
Application		
Function principle		Through-beam sensor
Electrical data		
Frequency AC	[Hz]	47...63
Operating voltage	[V]	20...250 AC/DC
Max. power consumption	[VA]	3.5
Protection class		II
Reverse polarity protection		no
Type of light		Infrared light
Wave length	[nm]	880
Outputs		
Electrical design		Relay



## Through-beam sensor receiver

OAE-FKOA/O.MONTZU

Output function	light-on/dark-on mode; (programmable)
Contact rating	250 V AC / 3 A / 360 VA, 125 V DC / 3 A / 30 W
Switching frequency AC [Hz]	10
Switching frequency DC [Hz]	10
Short-circuit proof	no
Overload protection	no

## Monitoring range

Transmitter / receiver	receiver
Range [m]	25...50; (depending on the transmitter)
Range adjustable	yes

## Operating conditions

Ambient temperature [°C]	-25...60
Protection	IP 65

## Tests / approvals

EMC	EN 60947-5-2	
	EN 55011	class B
MTTF [years]	271	

## Mechanical data

Weight [g]	165
Housing	rectangular
Dimensions [mm]	90 x 30 x 70
Material	PPO modified
Lens material	PMMA
Lens alignment	Side sensing

## Displays / operating elements

Display	Switching status	1 x LED, yellow
	Power	1 x LED, green
	Function	1 x LED, red

## Electrical connection

Required protection	miniature fuse to IEC60127-2 sheet 1; ≤ 5 A; fast acting
---------------------	--

## Remarks

Remarks	Recommendation: check the unit for reliable function after a short circuit.
Pack quantity	1 pcs.

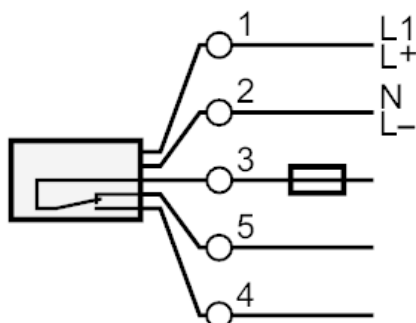
## Through-beam sensor receiver

OAE-FKOA/O.MONTZU

## Electrical connection

terminals: ...1.5 mm<sup>2</sup>; Cable sheath: Ø 4.5...10 mm; Cable gland: M16 X 1.5

## Connection



Note : miniature fuse to IEC60127-2 sheet 1 ≤ 5 A fast acting

## Diagrams and graphs

excess gain graph

