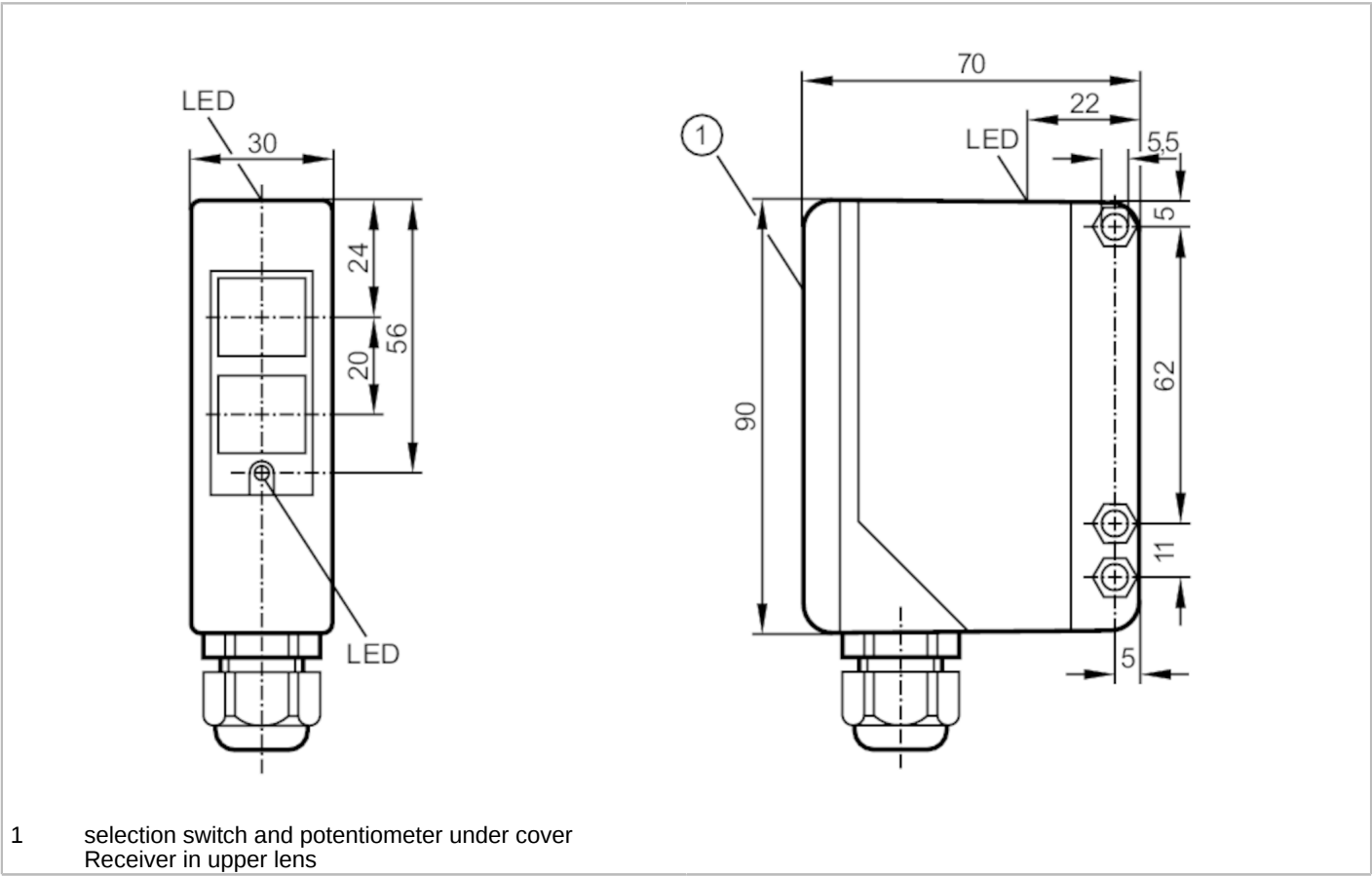




Through-beam sensor receiver

OAE-FKOA



Product characteristics		
Type of light		Infrared light
Housing		rectangular
Application		
Function principle		Through-beam sensor
Electrical data		
Frequency AC	[Hz]	47...63
Operating voltage	[V]	20...250 AC/DC
Max. power consumption	[VA]	3.5
Protection class		II
Reverse polarity protection		no
Type of light		Infrared light
Wave length	[nm]	880
Outputs		
Electrical design		Relay
Output function		light-on/dark-on mode; (programmable)
Contact rating		250 V AC / 3 A / 360 VA, 125 V DC / 3 A / 30 W
Switching frequency AC	[Hz]	10
Switching frequency DC	[Hz]	10



Through-beam sensor receiver

OAE-FKOA

Short-circuit proof	no	
Overload protection	no	
Monitoring range		
Transmitter / receiver	receiver	
Range [m]	25...50; (depending on the transmitter)	
Range adjustable	yes	
Operating conditions		
Ambient temperature [°C]	-25...60	
Protection	IP 65	
Tests / approvals		
EMC	EN 60947-5-2	
	EN 55011	class B
MTTF [years]	271	
Mechanical data		
Weight [g]	304.5	
Housing	rectangular	
Dimensions [mm]	90 x 30 x 70	
Material	PPO modified	
Lens material	PMMA	
Lens alignment	Side sensing	
Displays / operating elements		
Display	Switching status	1 x LED, yellow
	Power	1 x LED, green
	Function	1 x LED, red
Electrical connection		
Required protection	miniature fuse to IEC60127-2 sheet 1; ≤ 5 A; fast acting	
Remarks		
Remarks	Recommendation: check the unit for reliable function after a short circuit.	
Pack quantity	1 pcs.	

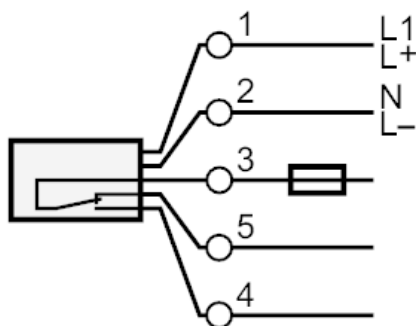
Through-beam sensor receiver

OAE-FKOA

Electrical connection

terminals: ...1.5 mm²; Cable sheath: Ø 4.5...10 mm; Cable gland: M16 X 1.5

Connection



Note : miniature fuse to IEC60127-2 sheet 1 ≤ 5 A fast acting

Diagrams and graphs

excess gain graph

