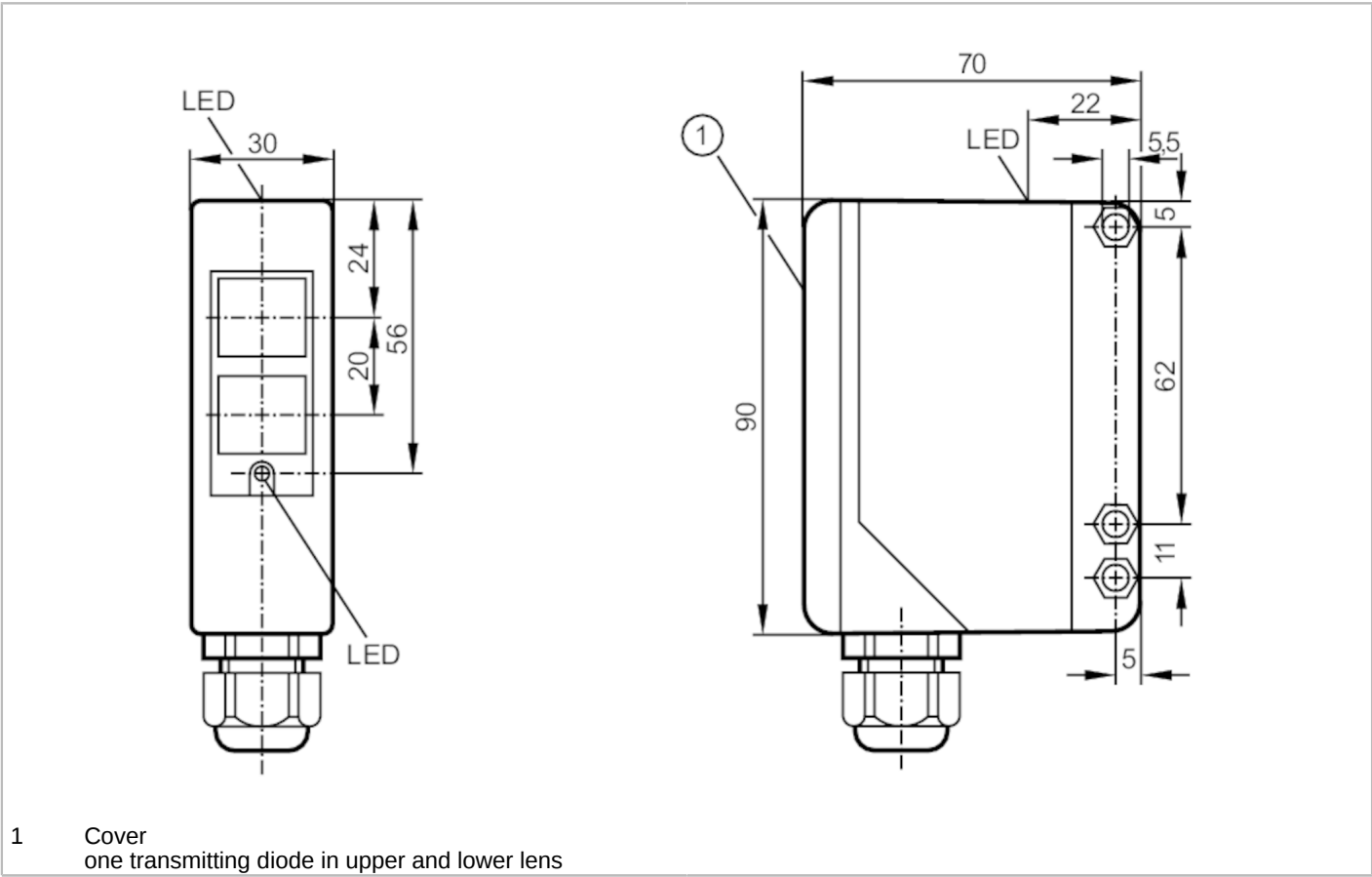




Through-beam sensor transmitter

OAS-000A



1 Cover
one transmitting diode in upper and lower lens



Product characteristics		
Type of light		Infrared light
Housing		rectangular
Application		
Function principle		Through-beam sensor
Electrical data		
Frequency AC	[Hz]	47...63
Operating voltage	[V]	20...250 AC/DC
Max. power consumption	[VA]	3.5
Protection class		II
Type of light		Infrared light
Wave length	[nm]	880
Outputs		
Short-circuit protection		no
Overload protection		no
Monitoring range		
Transmitter / receiver		transmitter
Range	[m]	< 50
Range adjustable		no

OA0101



Through-beam sensor transmitter

OAS-000A

Max. light spot diameter	[mm]	1500
Light spot dimensions refer to		at maximum range

Operating conditions

Ambient temperature	[°C]	-25...60
Protection		IP 65

Tests / approvals

EMC	EN 60947-5-2	
	EN 55011	class B
MTTF	[years]	393

Mechanical data

Weight	[g]	278
Housing		rectangular
Dimensions	[mm]	90 x 30 x 70
Material		PPO modified
Lens material		PMMA
Lens alignment		Side sensing

Displays / operating elements

Display	Power	1 x LED, green
---------	-------	----------------

Accessories

Items supplied	Angle bracket: 1, E20514
	screwdrivers

Remarks

Pack quantity	1 pcs.
---------------	--------

Electrical connection

terminals: ...1.5 mm²; Cable sheath: Ø 4.5...10 mm; Cable gland: M16 X 1.5

Connection

