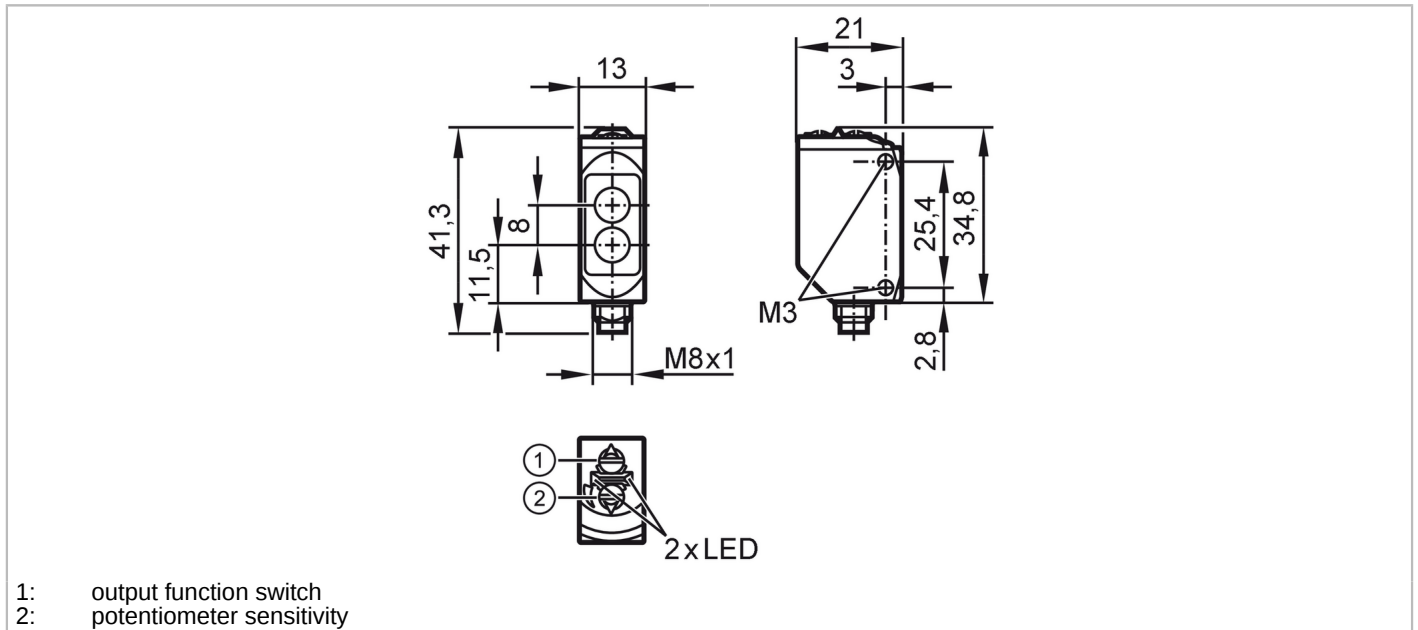




Diffuse reflection sensor

O6T-FPKG/AS/4P



Product characteristics

Type of light	red light
Housing	rectangular

Application

Function principle	Diffuse reflection sensor
--------------------	---------------------------

Electrical data

Operating voltage [V]	10...30 DC
Current consumption [mA]	16; ((24 V))
Protection class	III
Reverse polarity protection	yes
Type of light	red light
Wave length [nm]	633

Outputs

Electrical design	PNP
Output function	light-on/dark-on mode; (selectable)
Max. voltage drop switching output DC [V]	2.5
Permanent current rating of switching output DC [mA]	100
Switching frequency DC [Hz]	1000
Short-circuit protection	yes
Type of short-circuit protection	yes (non-latching)

Monitoring range

Range [mm]	5...500; (white paper 200 x 200 mm 90 % remission)
Setting range [mm]	100...500
Range adjustable	yes

O6T309



Diffuse reflection sensor

O6T-FPKG/AS/4P

Max. light spot diameter [mm]	15
Light spot dimensions refer to	at maximum range

Interfaces	
Communication interface	IO-Link
Transmission type	COM2 (38,4 kBaud)
IO-Link revision	1.1
SDCI standard	IEC 61131-9
Profiles	Smart Sensor - SSP 0
	Generic Profiled Sensor
	Function
	Device identification
	Function
	Multiple switching signal
SIO mode	yes
Required master port class	A
Min. process cycle time [ms]	2.5
IO-Link process data (cyclical)	Function
	bit length
	process value
	8
	binary switching information
	1
IO-Link functions (acyclical)	application specific tag; operating hours counter; switching cycles counter
Supported DeviceIDs	Type of operation
	DeviceID
	default
	423

Operating conditions	
Ambient temperature [°C]	-25...80
Protection	IP 65; IP 67; IP 68; IP 69K

Tests / approvals	
EMC	EN 60947-5-2
MTTF [years]	681
UL approval	Ta
	-25...40 °C
	Enclosure type
	Type 1
	voltage supply
	Class 2
	UL approval number
	E010

Mechanical data	
Weight [g]	34.4
Housing	rectangular
Dimensions [mm]	41.3 x 13 x 21
Material	housing: stainless steel (1.4404 / 316L); sealing: EPDM; plastics: PPSU
Lens material	front lens:PMMA
Lens alignment	Side sensing
Tightening torque [Nm]	1; (screws)

Displays / operating elements	
Display	Switching status
	1 x LED, yellow
	Power
	1 x LED, green

Remarks	
Remarks	cULus - Class 2 source required
Pack quantity	1 pcs.



Diffuse reflection sensor

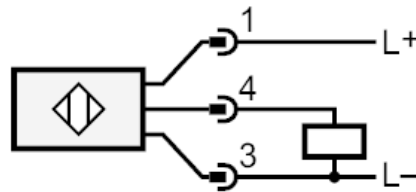
O6T-FPKG/AS/4P

Electrical connection

Connector: 1 x M8; coding: A



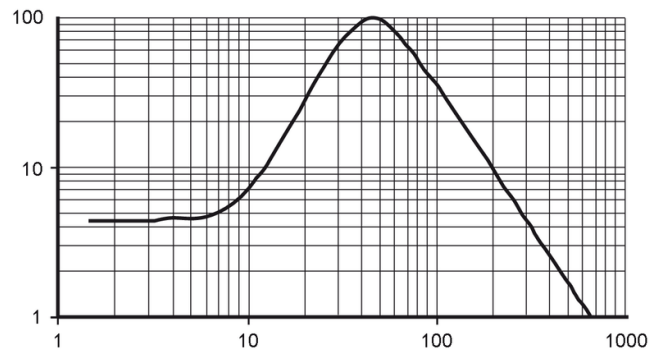
Connection



4 OUT / IO-Link

Diagrams and graphs

excess gain graph



x: distance [mm]

y: excess gain factor