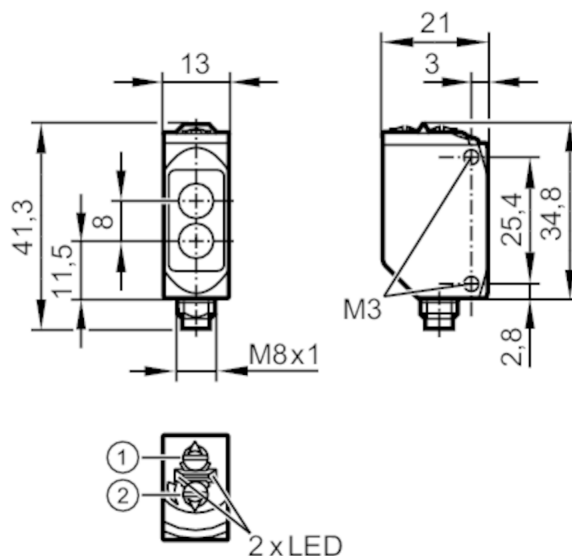


O6T400



Diffuse reflection sensor

O6T-FPKG/AS/4P



- 1: output function switch
2: potentiometer sensitivity



Product characteristics

| | |
|---------------|-------------|
| Type of light | red light |
| Housing | rectangular |

Application

| | |
|--------------------|---|
| Function principle | Diffuse reflection sensor |
| Application | suited for use in the machine tool industry |

Electrical data

| | | |
|-----------------------------|------|--------------|
| Operating voltage | [V] | 10...30 DC |
| Current consumption | [mA] | 16; ((24 V)) |
| Protection class | | III |
| Reverse polarity protection | | yes |
| Type of light | | red light |
| Wave length | [nm] | 633 |

Outputs

| | | |
|---|------|-------------------------------------|
| Electrical design | | PNP |
| Output function | | light-on/dark-on mode; (selectable) |
| Max. voltage drop switching output DC | [V] | 2.5 |
| Permanent current rating of switching output DC | [mA] | 100 |
| Switching frequency DC | [Hz] | 1000 |
| Short-circuit protection | | yes |
| Type of short-circuit protection | | yes (non-latching) |

Monitoring range

| | | |
|-------|------|--|
| Range | [mm] | 5...500; (white paper 200 x 200 mm 90 % remission) |
|-------|------|--|

O6T400



Diffuse reflection sensor

O6T-FPKG/AS/4P

| | | |
|--------------------------------|------|------------------|
| Setting range | [mm] | 100...500 |
| Range adjustable | | yes |
| Max. light spot diameter | [mm] | 15 |
| Light spot dimensions refer to | | at maximum range |

Operating conditions

| | | |
|---------------------|------|---------------------|
| Ambient temperature | [°C] | -25...60 |
| Protection | | IP 65; IP 67; IP 68 |

Tests / approvals

| | | |
|-------------|--------------------|--------------|
| EMC | | EN 60947-5-2 |
| MTTF | [years] | 910 |
| UL approval | UL approval number | E010 |

Mechanical data

| | | |
|-------------------|------|--|
| Weight | [g] | 34.4 |
| Housing | | rectangular |
| Dimensions | [mm] | 41.3 x 13 x 21 |
| Material | | housing: stainless steel (1.4404 / 316L); plastics: PPSU; sealing: FKM |
| Lens material | | PMMA |
| Lens alignment | | Side sensing |
| Tightening torque | [Nm] | 1; (screws) |

Displays / operating elements

| | | |
|---------|------------------|-----------------|
| Display | Switching status | 1 x LED, yellow |
| | Power | 1 x LED, green |

Remarks

| | |
|---------------|---------------------------------|
| Remarks | cULus - Class 2 source required |
| Pack quantity | 1 pcs. |

Electrical connection

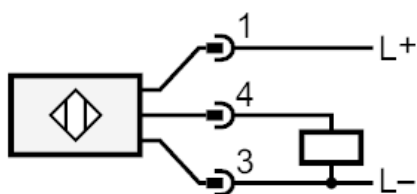
Connector: 1 x M8; coding: A



Diffuse reflection sensor

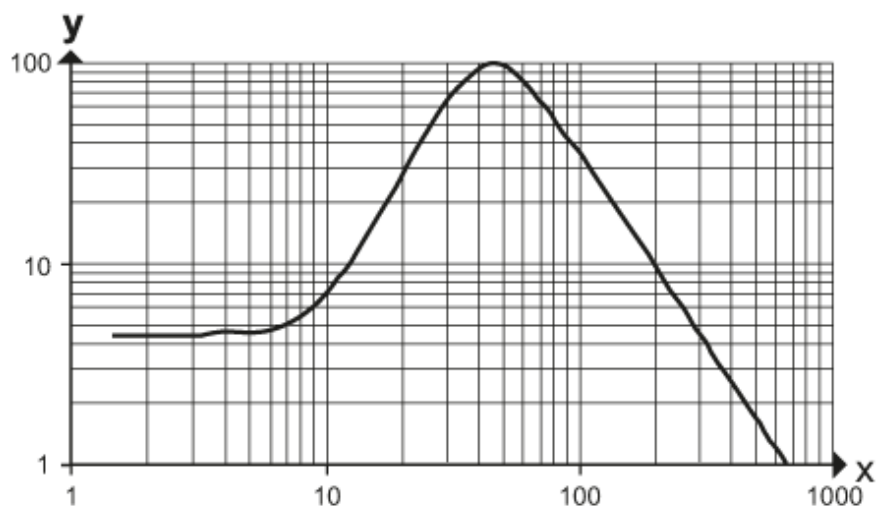
O6T-FPKG/AS/4P

Connection



Diagrams and graphs

excess gain graph



x: distance [mm]

y: excess gain factor