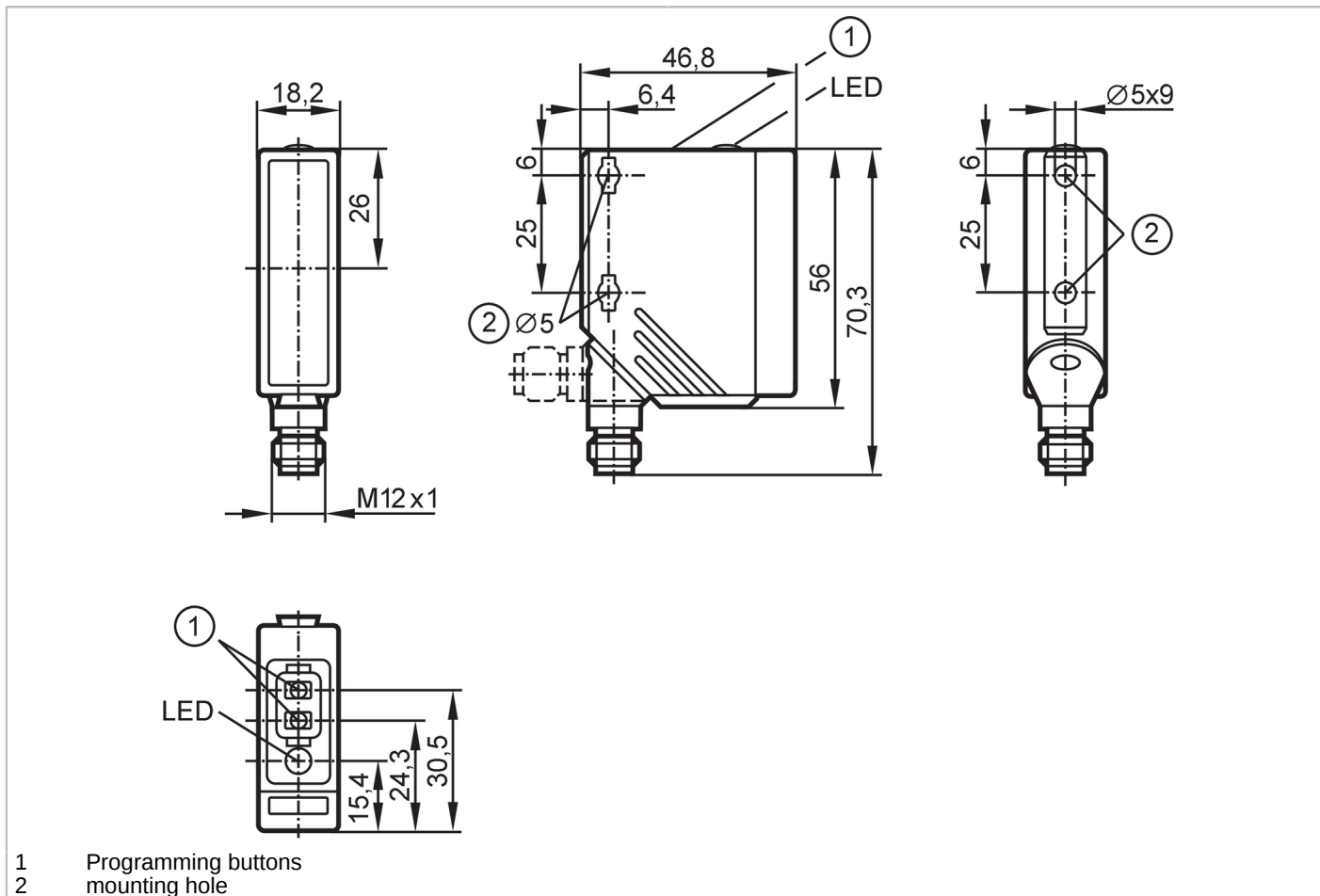


O5G500



Retro-reflective sensor for the detection of transparent objects

O5PGFAKG/US100



Product characteristics	
Type of light	red light
Housing	rectangular
Application	
Special feature	polarization filter; Function check output
Function principle	Retro-reflective sensor
Electrical data	
Operating voltage [V]	10...36 DC; (cULus - Class 2 source required)
Current consumption [mA]	< 50
Protection class	II
Reverse polarity protection	yes
Type of light	red light
Wave length [nm]	624
Outputs	
Electrical design	PNP/NPN; (Automatic load detection PNP/NPN)
Output function	light-on/dark-on mode; (programmable)
Max. voltage drop switching output DC [V]	2.5

O5G500



Retro-reflective sensor for the detection of transparent objects

O5PGFAKG/US100

Function check output		yes
Max. voltage drop of function check output [V]		2.5
Max. current load for function check output [mA]		50
Permanent current rating of switching output DC [mA]		200
Switching frequency DC [Hz]		1500
Short-circuit protection		yes
Type of short-circuit protection		yes (non-latching)
Overload protection		yes

Monitoring range

Range referred to prismatic reflector [m]		0...3; (Prismatic reflector 100 x 100 mm E20454)
Range adjustable		yes
Max. light spot diameter [mm]		80
Light spot dimensions refer to		at maximum range
Polarization filter available		yes

Operating conditions

Ambient temperature [°C]		-25...60
Protection		IP 67

Tests / approvals

EMC		EN 60947-5-2
MTTF [years]		405

Mechanical data

Weight [g]		73
Housing		rectangular
Dimensions [mm]		56 x 18.2 x 46.8
Material		housing: PA; Front framework: stainless steel; operator interface: TPU (urethane)
Lens material		front lens:PMMA
Lens alignment		Side sensing

Mounting hole

Tightening torque [Nm]		< 2; (when using a mounting screw M5)
------------------------	--	---------------------------------------

Displays / operating elements

Display	Switching status	1 x LED, yellow
	Function	1 x LED, red
Teach function		yes
Electronic lock		yes

Remarks

Pack quantity		1 pcs.
---------------	--	--------

O5G500

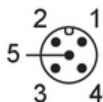


Retro-reflective sensor for the detection of transparent objects

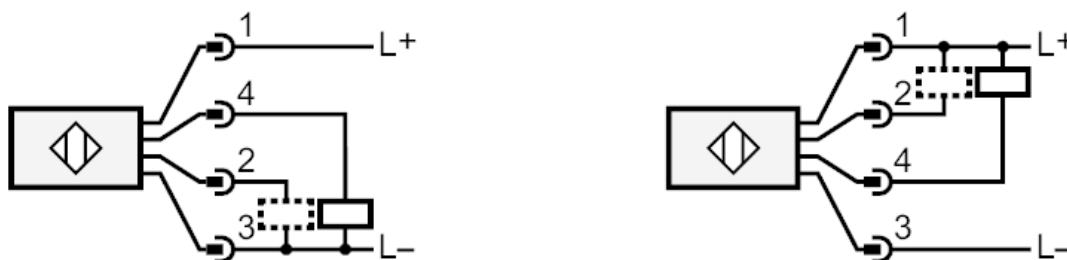
O5PGFAKG/US100

Electrical connection

Connector: 1 x M12; coding: A



Connection



- 2 Function check output
- 4 Switching output
- 2+4 Automatic load detection PNP/NPN
- 5 n.c. = not used

Diagrams and graphs

excess gain graph

