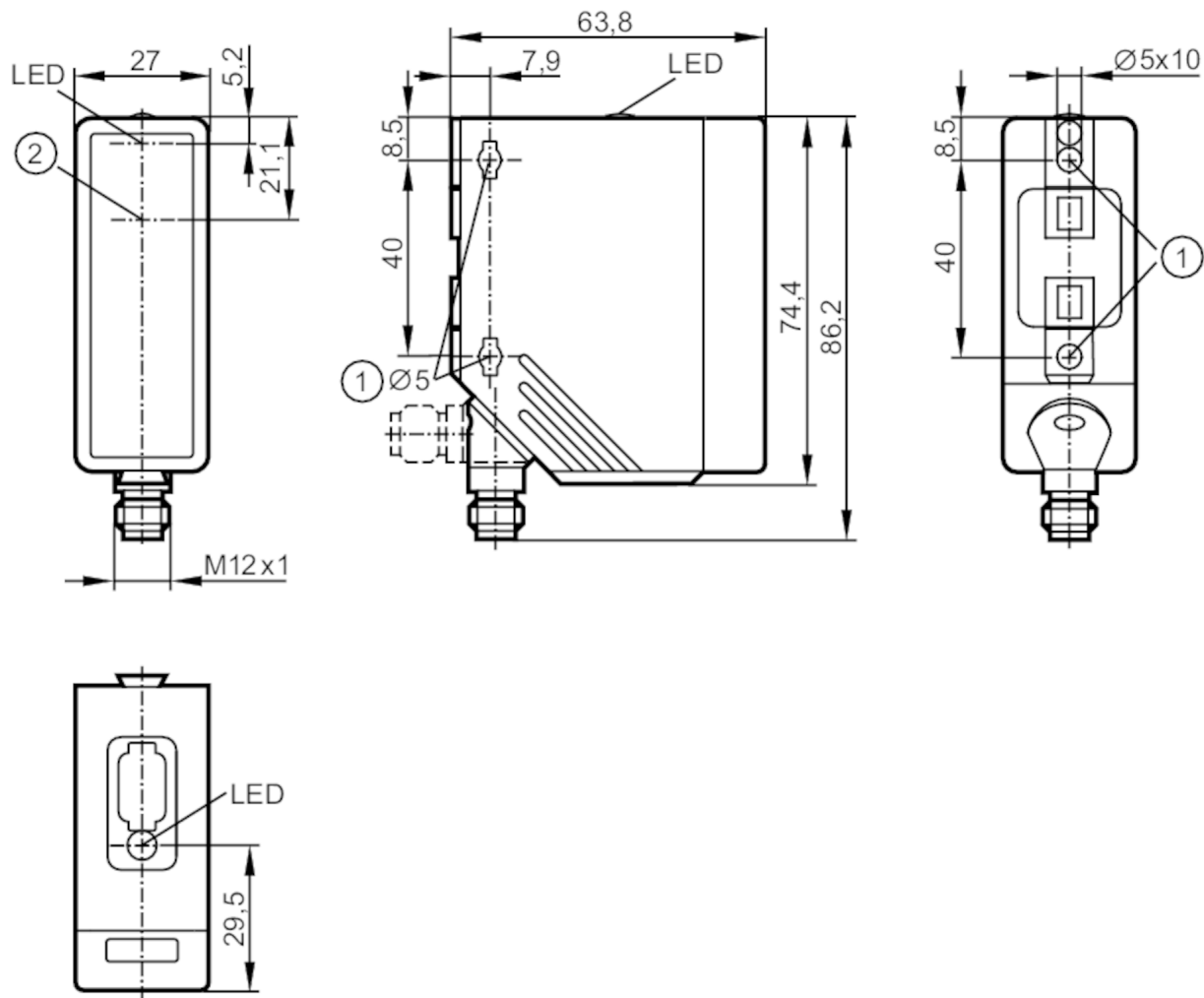


O4E200



Through-beam sensor receiver

O4E-DPKG/US100



- 1 When a M5 mounting screw is used, the max. tightening torque is 2 Nm.
2 Light incidence



Product characteristics

Type of light	red light
Housing	rectangular

Application

Function principle	Through-beam sensor
--------------------	---------------------

Electrical data

Operating voltage	[V]	10...36 DC; (cULus - Class 2 source required)
Current consumption	[mA]	12
Protection class		II
Reverse polarity protection		yes
Type of light		red light
Wave length	[nm]	624

Outputs

Electrical design	PNP
-------------------	-----

O4E200



Through-beam sensor receiver

O4E-DPKG/US100

Output function	dark-on mode
Max. voltage drop switching output DC [V]	2.5
Permanent current rating of switching output DC [mA]	200
Switching frequency DC [Hz]	1000
Short-circuit protection	yes
Type of short-circuit protection	yes (non-latching)
Overload protection	yes

Monitoring range	
Transmitter / receiver	receiver
Range [m]	0...50
Range adjustable	no

Operating conditions	
Ambient temperature [°C]	-25...60
Protection	IP 67

Tests / approvals	
EMC	EN 60947-5-2
MTTF [years]	1097

Mechanical data	
Weight [g]	118
Housing	rectangular
Dimensions [mm]	74.4 x 27 x 63.8
Material	housing: PA; Front framework: stainless steel; LED window: PC
Lens material	PMMA
Lens alignment	Side sensing

Displays / operating elements	
Display	Switching status 2 x LED, yellow

Remarks	
Pack quantity	1 pcs.

Electrical connection

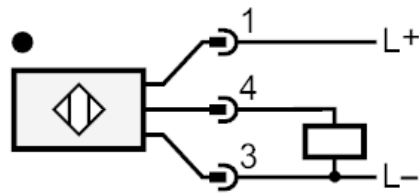
Connector: 1 x M12; coding: A



Through-beam sensor receiver

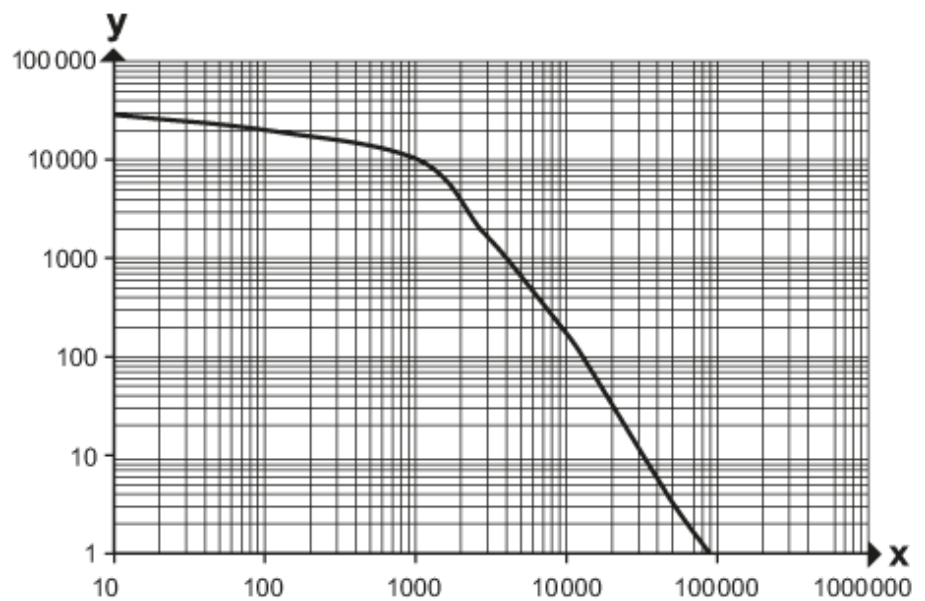
O4E-DPKG/US100

Connection



Diagrams and graphs

excess gain graph



x: Abstand [mm]

y: Funktionsreservefaktor