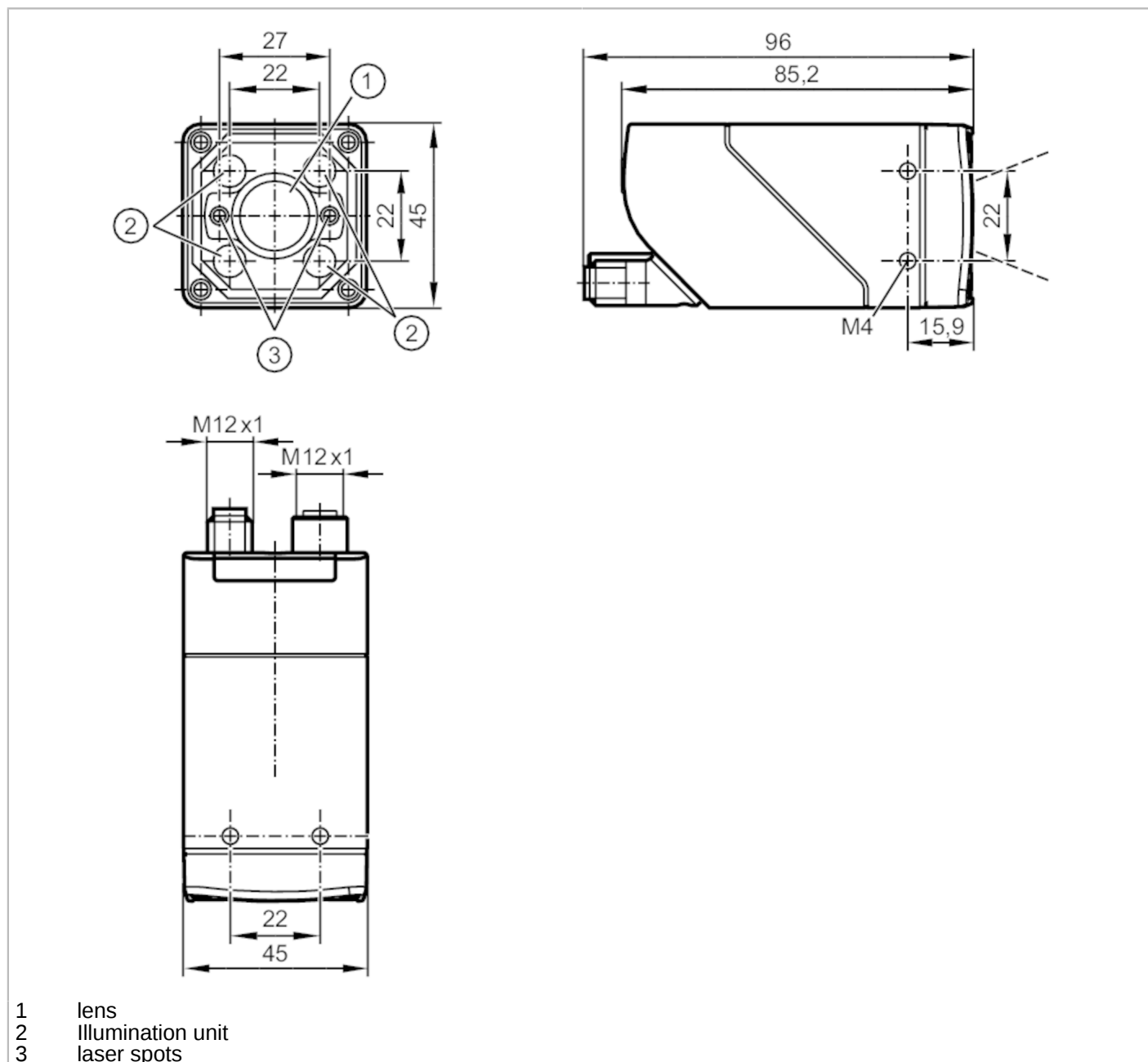


# O2I501



## 1D / 2D code readers

O2IIRDKG/E1/E2/EF/IVF/TB/S



- 1 lens
- 2 illumination unit
- 3 laser spots



### Product characteristics

Type of light		Infrared light
Image resolution	[px]	1280 x 960
Lens type		standard
Max. reading rate	[Hz]	40
Dimensions	[mm]	45 x 45 x 85

# O2I501



## 1D / 2D code readers

O2IIRDKG/E1/E2/EF/VF/TB/S

Electrical data				
Operating voltage [V]	18...30 DC			
Current consumption [mA]	< 400; (24V DC)			
Protection class	III			
Reverse polarity protection	yes			
Type of light	Infrared light			
Wave length [nm]	850			
Image sensor	CMOS image sensor black/white			
Integrated lighting	yes			
Laser marking	yes			
Inputs / outputs				
Number of inputs and outputs	Number of digital inputs: 1; Number of digital outputs: 2			
Inputs				
Number of digital inputs	1			
Trigger	external; 24 V PNP/NPN (IEC 61131-2 Typ 3); TCP/IP; EtherNet/IP; internal			
Outputs				
Total number of outputs	2			
Number of digital outputs	2; (configurable)			
Output function	24 V PNP/NPN			
Max. voltage drop switching output DC [V]	1			
Max. current load per output [mA]	100			
Short-circuit protection	yes			
Type of short-circuit protection	yes (non-latching)			
Overload protection	yes			
Monitoring range				
Field of view size [mm]	Operating distance	Field of view		
	85	28 x 21		
	300	92 x 69		
	500	152 x 114		
1000	302 x 227			
Operating distance [mm]	> 85			
Image resolution [px]	1280 x 960			
Lens type	standard			
Readable codes	Interleaved 2-of-5; Industrial 2-of-5; Code 39; Code 93; Code 128; Pharmacode; Codabar; EAN8; EAN8 Add-On 2; EAN8 Add-On 5; EAN13; EAN13 Add-On 2; EAN13 Add-On 5; UPC-A; UPC-A Add-On 2; UPC-A Add-On 5; UPC-E; UPC-E Add-On 2; UPC-E Add-On 5; GS1 DataBar Omnidirectional; GS1 DataBar Truncated; GS1 DataBar Stacked; GS1 DataBar Stacked Omnidirectional; GS1 DataBar Limited; GS1 DataBar Expanded; GS1 DataBar Expanded Stacked; GS1 - 128; MSI Barcode; ECC200; PDF-417; QR; Micro-QR; Aztec Code; GS1 ECC200; GS1 QR Code; GS1 Aztec Code			
Omnidirectional reading	yes			
Max. inclination to the image plane [°]	45			
Max. reading rate [Hz]	40			



## 1D / 2D code readers

O2IIRDKG/E1/E2/EF/VF/TB/S

Software / programming		
Parameter setting options	teach button; via PC with ifm Vision Assistant	
Interfaces		
Communication interface	Ethernet	
Ethernet		
Number of Ethernet interfaces	1	
Transmission standard	10Base-T; 100Base-TX	
Transmission rate	10 MBit/s; 100 MBit/s	
Protocol	TCP/IP; EtherNet/IP	
Factory settings	IP address: 192.168.0.69	
	subnet mask: 255.255.255.0 (Class C)	
	gateway IP address: 192.168.0.201	
	MAC address: see type label	
Usage type	Parameter setting; Data transmission	
Operating conditions		
Ambient temperature [°C]	-10...50	
Storage temperature [°C]	-40...70	
Protection	IP 65	
Tests / approvals		
EMC	EN 61000-6-4 radiation of interference	industrial environments
	EN 61000-6-2 noise immunity	industrial environments
Shock resistance	EN 60068-2-27	50 g 11 ms / not repetitive
	EN 60068-2-27	40 g 6 ms / repetitive
Vibration resistance	EN 60068-2-6	2 g (10 ... 150 Hz)
Laser protection class	1	
Notes on laser protection	Caution:	Laser light
	laser class:	1
		EN / IEC60825-1:2007
		EN / IEC60825-1:2014
		Complies with 21 CFR 1040 except for deviations pursuant to Laser Notice No. 50, dated June 2007.
Photobiological safety	exempt group; (EN 62471)	
Electrical safety	EN 61010-2-201	electrical supply only via PELV circuits
Mechanical data		
Weight [g]	599.1	
Dimensions [mm]	45 x 45 x 85	
Material	housing: diecast zinc powder-coated; front lens: Gorillaglas; LED window: PC; pushbuttons: POM; plug: stainless steel; sealing: FKM	
Displays / operating elements		
Display	Function	2 x LED, green
	Function	2 x LED, yellow
	Teach-Funktion	1 x LED, green
	Teach-Funktion	1 x LED, yellow
Operating elements	1 x	Teach-Taste

# O2I501



## 1D / 2D code readers

O2IIRDKG/E1/E2/EF/VF/TB/S

Accessories	
Accessories (optional)	Operating software
	Mounting accessories
	Adapter cable
	protective and filter windows

Remarks	
Pack quantity	1 pcs.

### Electrical connection

#### Electrical connection - Ethernet

- |   |      |
|---|------|
| 1 | TxD+ |
| 2 | RxD+ |
| 3 | TxD- |
| 4 | RxD- |

Connector: 1 x M12



#### Electrical connection - supply

- |   |  |
|---|--|
| 1 | U+   |
| 2 | trigger input  |
| 3 | 0 V  |
| 4 | Switching output 1 configurable  |
| 5 | Switching output 2 configurable /<br>trigger output with external illumination |

Connector: 1 x M12

