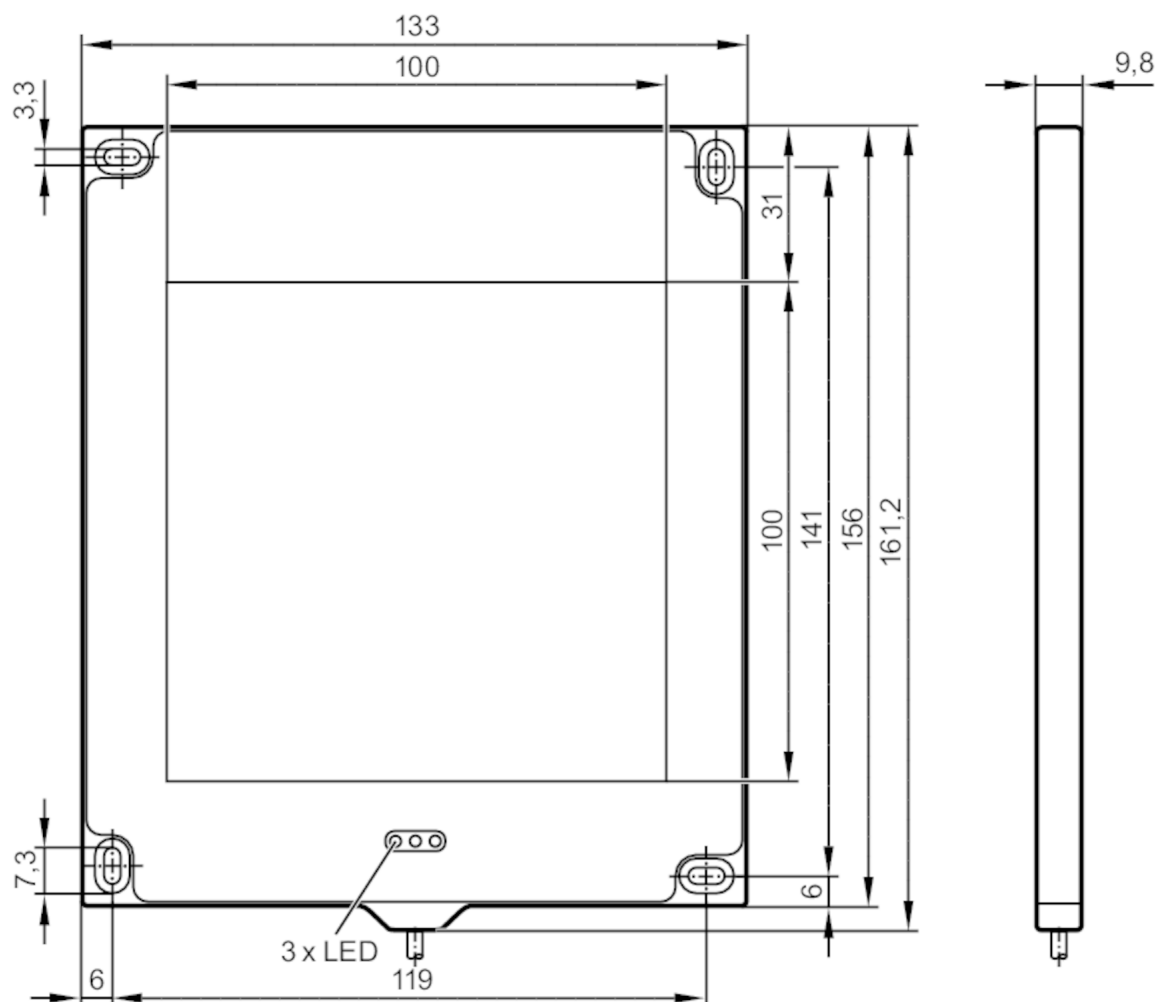


BACKLIGHT 100X100 RED

Alternative articles: O2D944

When selecting an alternative article and accessories please note that technical data may differ!



Type of light	red light
<b>Application</b>	
Illuminated field [mm]	100 x 100
Design	backlight
Type of operation	high light intensity (max. pulse length: 50 ms; max. mark-to-space ratio: 1/10); normal light intensity (permanent operation possible)

Operating voltage tolerance	[%]	-10...10
Operating voltage	[V]	24 DC
Current consumption	[mA]	Operating mode "permanent operation": 450; operating mode "high light intensity": 250
Protection class		III

# O2D904



## External illumination

BACKLIGHT 100X100 RED

Reverse polarity protection	yes
Type of light	red light
Wave length [nm]	660

### Inputs

Trigger	24 V PNP (IEC 61131-1)
---------	------------------------

### Outputs

Overload protection	yes
---------------------	-----

### Operating conditions

Ambient temperature [°C]	0...50
Protection	IP 65
Overheat protection	yes

### Tests / approvals

MTTF [years]	242
--------------	-----

### Mechanical data

Weight [g]	359
Dimensions [mm]	156 x 133 x 9.2
Material	aluminum
Lens material	PMMA

### Displays / operating elements

Display	Illumination status	1 x LED, yellow
	Power	1 x LED, green
	Excess temperature / overload	1 x LED, red

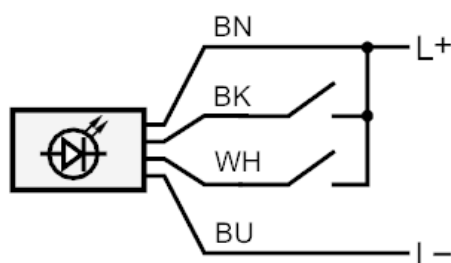
### Remarks

Pack quantity	1 pcs.
---------------	--------

### Electrical connection

Cable: 2 m, PUR; 4 x 0.14 mm<sup>2</sup>

#### Connection



black                      Trigger  
white                      operating mode "high light intensity"  
Core colors :  
BK =                      black  
BN =                      brown  
BU =                      blue  
WH =                      white