

N95002



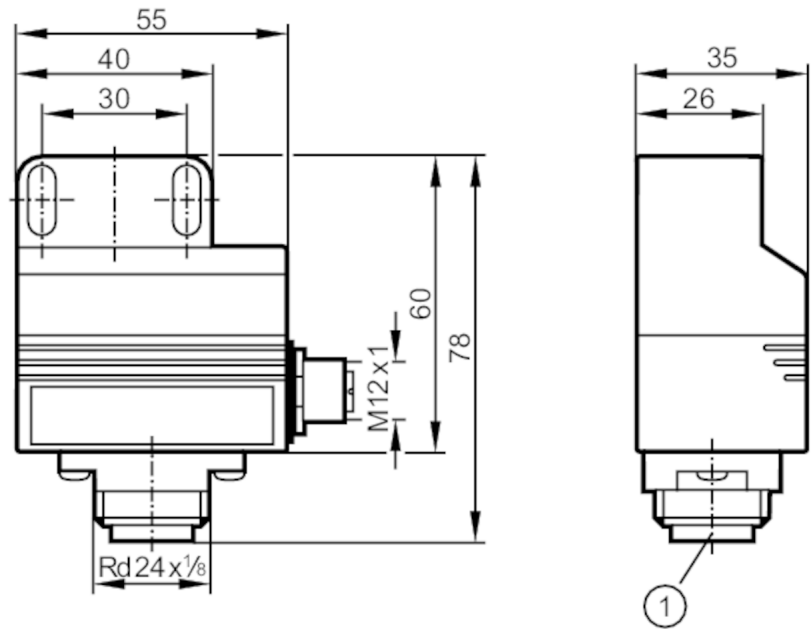
Inductive NAMUR dual sensor for valve actuators

IND2004DN/T1/1MS/1D/2G

Article no longer available - archive entry

Alternative articles: N95001

When selecting an alternative article and accessories please note that technical data may differ!



1 field connection



Product characteristics

Electrical design	NAMUR
Output function	2 x normally closed
Sensing range [mm]	4
Housing	rectangular
Dimensions [mm]	40 x 26 x 60

Application

Application	For mechanical interfaces to ISO 5211 (VDI/VDE)
-------------	---

Electrical data

Connection at circuit amplifier	yes
Switching amplifiers	connection to certified intrinsically safe circuits with the max. values: U = 15 V / I = 50 mA / P = 120 mW
Nominal voltage DC [V]	8.2; (1kΩ)
Current consumption [mA]	< 1; (disabled; conductive: > 2,2)
Protection class	III
Max. power-on delay time [ms]	1

Outputs

Electrical design	NAMUR
Output function	2 x normally closed
Switching frequency DC [Hz]	1300



Inductive NAMUR dual sensor for valve actuators

IND2004DN/T1/1MS/1D/2G

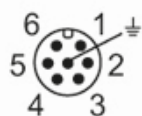
Monitoring range		
Sensing range	[mm]	4
Real sensing range Sr	[mm]	4 ± 10 %
Accuracy / deviations		
Correction factor		steel: 1 / stainless steel: 0.7 / brass: 0.5 / aluminum: 0.4 / copper: 0.3
Hysteresis	[% of Sr]	1...15
Switch-point drift	[% of Sr]	-10...10
Operating conditions		
Ambient temperature	[°C]	-20...70
Protection		IP 67
Tests / approvals		
Approval		BVS 03 ATEX E131; BVS 04 ATEX E153
ATEX marking		II 2G Ex ia IIC T6 Gb Ta: -20...70°C
		II 1D Ex ia IIIB T 90°C Da Ta: -20...70°C
		II 2G Ex ia IIC T5 Gb Ta: -20...80°C
		II 1D Ex ia IIIB T 100°C Da Ta: -20...80°C
EMC		EN 60947-5-6
Shock/vibration resistance		30 g (11 ms) / 10-55 Hz (1 mm)
Safety classification		
Max. internal capacitance	[nF]	100; (per intrinsically safe electric circuit)
Max. internal inductance	[μH]	150; (per intrinsically safe electric circuit)
Mechanical data		
Weight	[g]	175.4
Housing		rectangular
Mounting		non-flush mountable
Dimensions	[mm]	40 x 26 x 60
Material		housing: PBT; cover: PC
Displays / operating elements		
Display	Switching status	2 x LED, yellow
Remarks		
Remarks		solenoid valve circuit Ex-i: connection to certified intrinsically safe circuits with the max. values: U = 28 V DC / P = 2 W
Pack quantity		1 pcs.
Electrical connection - Socket		
Connector: 1 x M12; coding: A		

Inductive NAMUR dual sensor for valve actuators

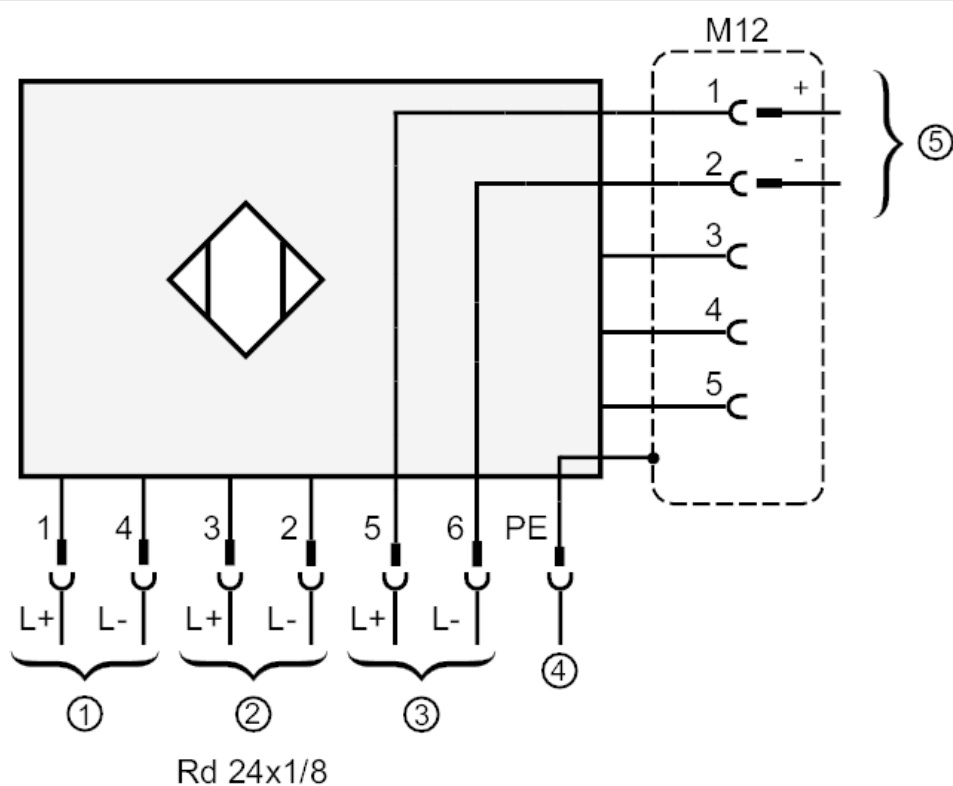
IND2004DN/T1/1MS/1D/2G

Electrical connection - plug

Connector: 1 x Rd24; coding: A



Connection



- 1 = sensor 1
- 2 = sensor 2
- 3 = Single solenoid valve Ex-i
- 4 = Potential equalization plug housing Connector M12
- 5 = Single solenoid valve Ex-i