



Continuous level sensor

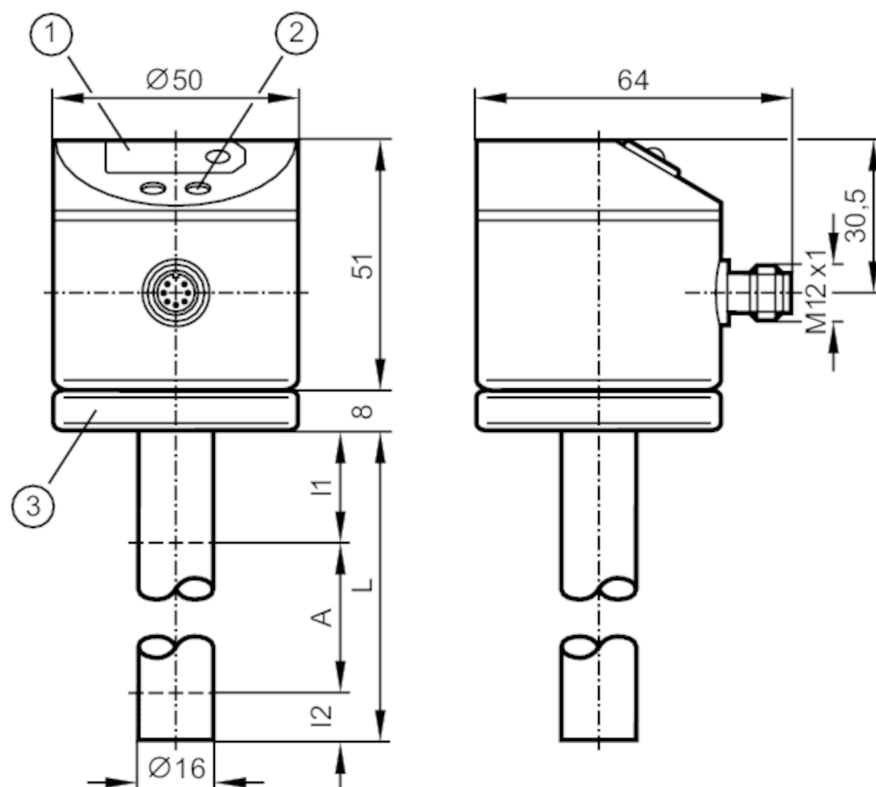
LK0728A-A-00KSPKG/US

Article no longer available - archive entry

Alternative articles: LK8124

When selecting an alternative article and accessories please note that technical data may differ!

For 8-wire cordsets the core colors are not standardized.
Please note the wiring of the sensor and the cordsets (see data sheet).



- 1 7-segment LED display
- 2 Programming button
- 3 housing connection with cable lug for cable 1.5...2.5 mm²



Product characteristics

Number of inputs and outputs	Number of digital outputs: 4
Probe length L [mm]	728

Application

System	gold-plated contacts
Media	hydrous coolants; mineral oils (dielectric constant < 3); water; media similar to water
Dielectric constant of the medium	> 2
Cannot be used for	media with separation layers (oil / water; oil / metal layer); acids and alkalis
Medium temperature [°C]	0...65; (medium temperature for oils; medium temperature for coolant emulsions, water and hydrous media)
Tank pressure [bar]	0.5; (when mounting with mounting accessories: E43001 - E43007, E43019)



Continuous level sensor

LK0728A-A-00KSPKG/US

Electrical data		
Operating voltage	[V]	18...30 DC
Current consumption	[mA]	< 80
Protection class		III
Reverse polarity protection		yes
Power-on delay time	[s]	3
Measuring principle		capacitive
Inputs / outputs		
Number of inputs and outputs		Number of digital outputs: 4
Outputs		
Total number of outputs		4
Output signal		switching signal
Electrical design		PNP
Number of digital outputs		4
Output function		normally open / closed; (configurable)
Max. voltage drop switching output DC	[V]	2.5
Permanent current rating of switching output DC	[mA]	300; (400 (...25 °C))
Short-circuit protection		yes
Type of short-circuit protection		yes (non-latching)
Overload protection		yes
Measuring/setting range		
Probe length L	[mm]	728
Active range A	[mm]	585
Inactive range I1 / I2	[mm]	102 / 40
Setting range		
Set point SP	[mm]	60...610
Reset point rP	[mm]	50...600
In steps of	[mm]	10
Hysteresis	[mm]	10
Accuracy / deviations		
Measuring error		± 5
	[% of the final value]	
Repeatability		± 2
Software / programming		
Adjustment of the switch point		Programming button
Operating conditions		
Ambient temperature	[°C]	0...60
Storage temperature	[°C]	-25...80
Protection		IP 67

LK8024



Continuous level sensor

LK0728A-A-00KSPKG/US

Tests / approvals		
EMC	EN 61000-4-2 ESD	4 kV CD / 8 kV AD
	EN 61000-4-3 HF radiated	10 V/m
	EN 61000-4-4 Burst	2 kV
	EN 61000-4-5 Surge	500 V / 1 kV
	EN 61000-4-6 HF conducted	10 V
Shock resistance		12 g
Vibration resistance		2.5 g

Mechanical data		
Dimensions	[mm]	Ø 16
Material		EPDM/X; FKM; brass Optalloy-plated; NBR; PA; PBT; PC; PP
Materials (wetted parts)		PP

Displays / operating elements		
Display	Switching status	3 x LED, red
	Function display	7-segment LED display
	Measured values	7-segment LED display

Remarks	
Remarks	for water and hydrous media with temperatures > 35 °C install the unit into a climatic tube
Pack quantity	1 pcs.

Electrical connection

Connector: 1 x M12; coding: A; Contacts: gold-plated



Connection

