



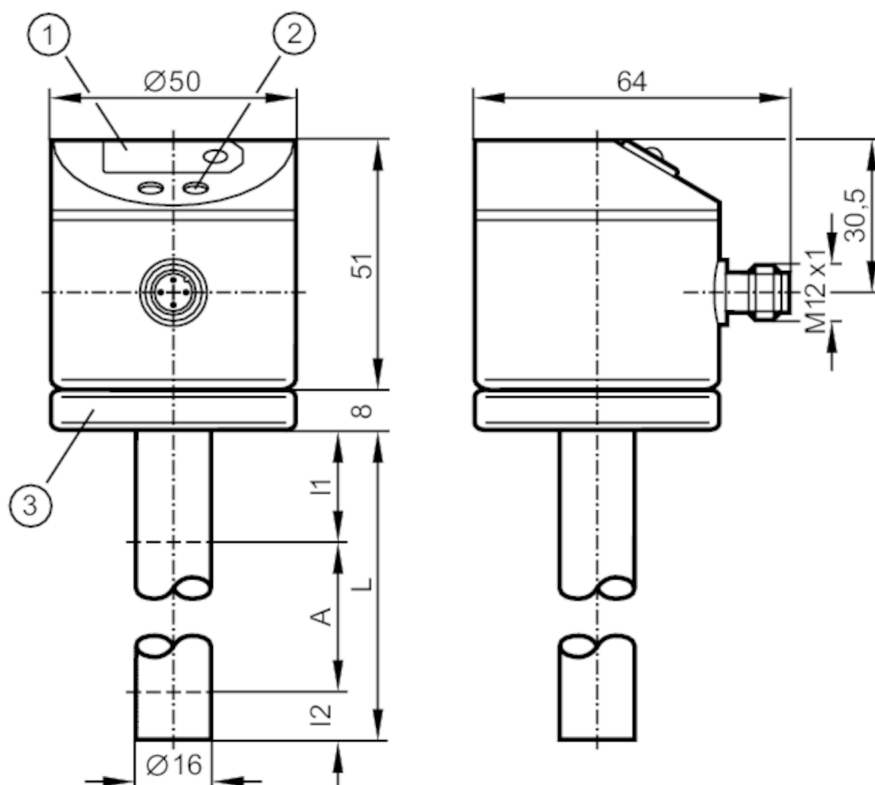
## Continuous level sensor

LK0472A-A-00KMPKG/US

Article no longer available - archive entry

Alternative articles: LK3123

When selecting an alternative article and accessories please note that technical data may differ!



- 1 7-segment LED display
- 2 Programming buttons
- 3 housing connection with cable lug for cable 1.5...2.5 mm²



### Product characteristics

Number of inputs and outputs	Number of digital outputs: 1; Number of analog outputs: 1
Probe length L [mm]	472

### Application

System	gold-plated contacts
Media	hydrous coolants; mineral oils (dielectric constant < 3); water; media similar to water
Dielectric constant of the medium	> 2
Cannot be used for	media with separation layers (oil / water; oil / metal layer); acids and alkalis
Medium temperature [°C]	0...65; (medium temperature for oils; medium temperature for coolant emulsions, water and hydrous media)
Tank pressure [bar]	0.5; (when mounting with mounting accessories: E43001 - E43007, E43019)

### Electrical data

Operating voltage [V]	18...30 DC
Current consumption [mA]	< 80
Protection class	III



## Continuous level sensor

LK0472A-A-00KMPKG/US

Reverse polarity protection	yes
Power-on delay time [s]	3
Measuring principle	capacitive

## Inputs / outputs

Number of inputs and outputs	Number of digital outputs: 1; Number of analog outputs: 1
------------------------------	---

## Outputs

Total number of outputs	2
Output signal	switching signal; analog signal
Electrical design	PNP
Number of digital outputs	1
Output function	normally open / closed; (configurable)
Max. voltage drop switching output DC [V]	2.5
Permanent current rating of switching output DC [mA]	200
Number of analog outputs	1
Analog current output [mA]	4...20
Max. load [ $\Omega$ ]	500
Analog voltage output [V]	0...10
Min. load resistance [ $\Omega$ ]	2000
Short-circuit protection	yes
Type of short-circuit protection	yes (non-latching)
Overload protection	yes

## Measuring/setting range

Probe length L [mm]	472
Active range A [mm]	390
Inactive range I1 / I2 [mm]	53 / 30
Setting range	
Set point SP [mm]	40...415
Reset point rP [mm]	35...410
In steps of [mm]	5
Hysteresis [mm]	5

## Accuracy / deviations

Measuring error [% of the final value]	$\pm 5$
Repeatability	$\pm 2$

## Software / programming

Adjustment of the switch point	Programming button
--------------------------------	--------------------

## Operating conditions

Ambient temperature [°C]	0...60
Storage temperature [°C]	-25...80
Protection	IP 67

LK3023



Continuous level sensor

LK0472A-A-00KMPKG/US

Tests / approvals		
EMC	EN 61000-4-2 ESD	4 kV CD / 8 kV AD
	EN 61000-4-3 HF radiated	10 V/m
	EN 61000-4-4 Burst	2 kV
	EN 61000-4-5 Surge	500 V / 1 kV
	EN 61000-4-6 HF conducted	10 V
Shock resistance		12 g
Vibration resistance		2.5 g

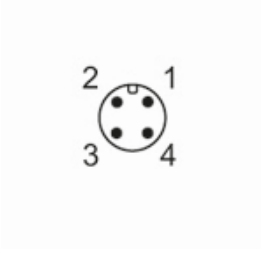
Mechanical data		
Dimensions	[mm]	Ø 16
Material		EPDM/X; FKM; brass Optalloy-plated; NBR; PA; PBT; PC; PP
Materials (wetted parts)		PP

Displays / operating elements		
Display	Switching status	LED, red
	Function display	7-segment LED display
	Measured values	7-segment LED display

Remarks	
Remarks	for water and hydrous media with temperatures > 35 °C install the unit into a climatic tube
Pack quantity	1 pcs.

Electrical connection

Connector: 1 x M12; coding: A; Contacts: gold-plated



Connection

