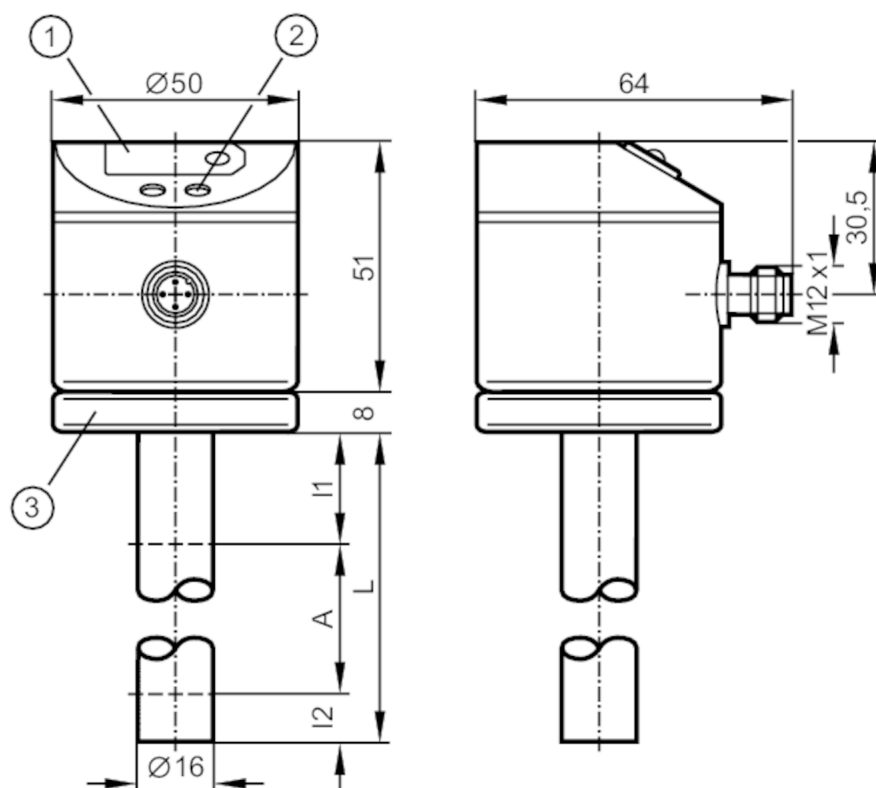




## Continuous level sensor

LK0472A-A-00KQNG/US

Article no longer available - archive entry



- 1 7-segment LED display  
 2 Programming buttons  
 3 housing connection with cable lug for cable 1.5...2.5 mm<sup>2</sup>



## Product characteristics

Number of inputs and outputs	Number of digital outputs: 2
Probe length L [mm]	472

## Application

System	gold-plated contacts
Media	hydrous coolants; mineral oils (dielectric constant < 3); water; media similar to water
Dielectric constant of the medium	> 2
Cannot be used for	media with separation layers (oil / water; oil / metal layer); acids and alkalis
Medium temperature [°C]	0...65; (medium temperature for oils; medium temperature for coolant emulsions, water and hydrous media)
Tank pressure [bar]	0.5; (when mounting with mounting accessories: E43001 - E43007, E43019)

## Electrical data

Operating voltage [V]	12...30 DC
Current consumption [mA]	< 80
Protection class	III
Reverse polarity protection	yes
Power-on delay time [s]	3



## Continuous level sensor

LK0472A-A-00KQNKG/US

Measuring principle	capacitive	
Inputs / outputs		
Number of inputs and outputs	Number of digital outputs: 2	
Outputs		
Total number of outputs	2	
Output signal	switching signal	
Electrical design	NPN	
Number of digital outputs	2	
Output function	normally open / closed; (configurable)	
Max. voltage drop switching output DC [V]	2.5	
Permanent current rating of switching output DC [mA]	200	
Short-circuit protection	yes	
Type of short-circuit protection	yes (non-latching)	
Overload protection	yes	
Measuring/setting range		
Probe length L [mm]	472	
Active range A [mm]	390	
Inactive range I1 / I2 [mm]	53 / 30	
Setting range		
Set point SP [mm]	40...415	
Reset point rP [mm]	35...410	
In steps of [mm]	5	
Hysteresis [mm]	5	
Accuracy / deviations		
Measuring error [% of the final value]	± 5	
Repeatability	± 2	
Software / programming		
Adjustment of the switch point	Programming button	
Operating conditions		
Ambient temperature [°C]	0...60	
Storage temperature [°C]	-25...80	
Protection	IP 67	
Tests / approvals		
EMC	EN 61000-4-2 ESD	4 kV CD / 8 kV AD
	EN 61000-4-3 HF radiated	10 V/m
	EN 61000-4-4 Burst	2 kV
	EN 61000-4-5 Surge	500 V / 1 kV
	EN 61000-4-6 HF conducted	10 V
Shock resistance	12 g	
Vibration resistance	2.5 g	

LK0023



Continuous level sensor

LK0472A-A-00KQNKG/US

Mechanical data		
Dimensions	[mm]	Ø 16
Material	EPDM/X; FKM; brass Optalloy-plated; NBR; PA; PBT; PC; PP	
Materials (wetted parts)	PP	
Displays / operating elements		
Display	Switching status	2 x LED, red
	Function display	7-segment LED display
	Measured values	7-segment LED display
Remarks		
Remarks	for water and hydrous media with temperatures > 35 °C install the unit into a climatic tube	
Pack quantity	1 pcs.	

Electrical connection

Connector: 1 x M12; coding: A; Contacts: gold-plated



Connection

