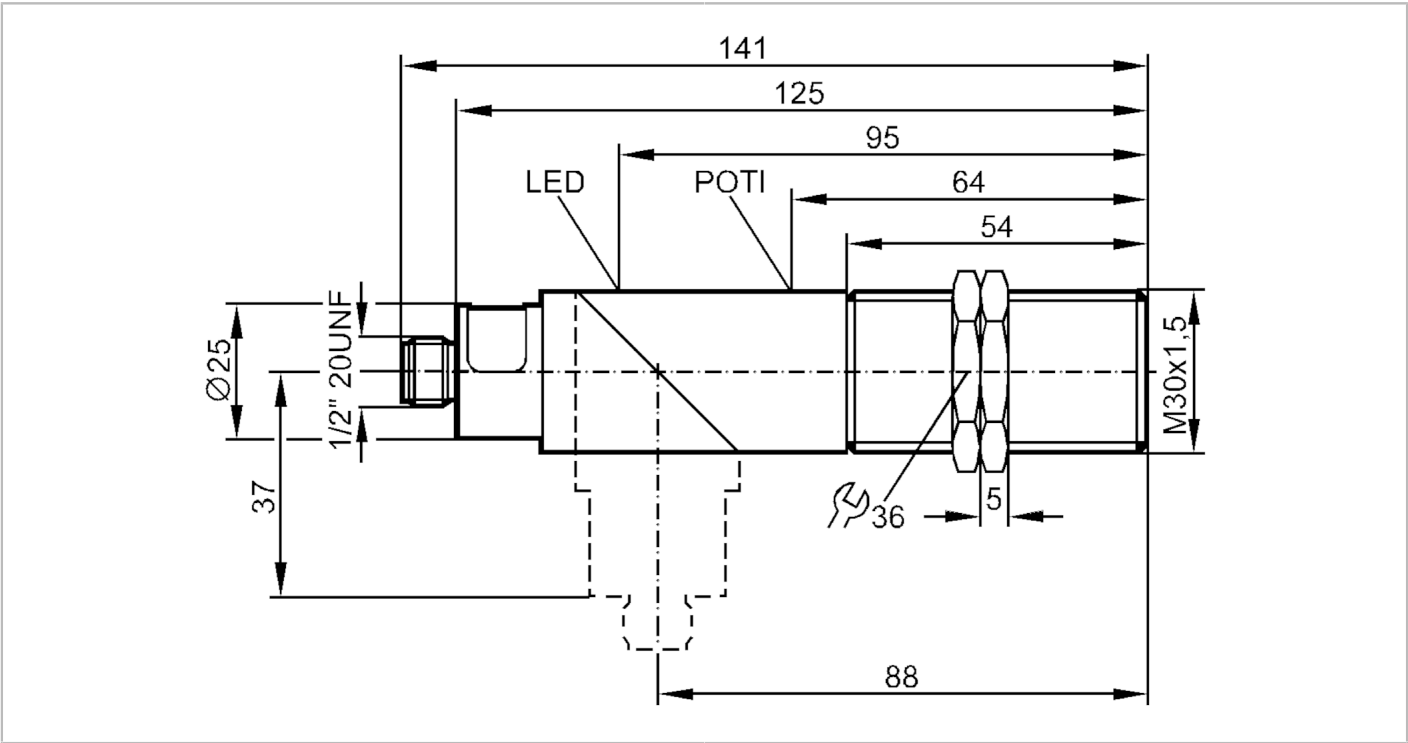




Capacitive sensor

KIE2015-FBOA/NI/LS100AK



Product characteristics	
Electrical design	Factory setting: normally open
Output function	normally open / closed; (selectable)
Sensing range [mm]	3...15
Housing	Threaded type
Dimensions [mm]	M30 x 1.5
Electrical data	
Operating voltage [V]	20...250 AC/DC
Protection class	I
Reverse polarity protection	no
Outputs	
Electrical design	Factory setting: normally open
Output function	normally open / closed; (selectable)
Max. voltage drop switching output DC [V]	8
Max. voltage drop switching output AC [V]	10
Minimum load current [mA]	5
Max. leakage current [mA]	2.5 (250 V AC) / 1.7 (110 V AC) / 1.5 (24 V DC)
Permanent current rating of switching output AC [mA]	200; (250 (...50 °C))
Permanent current rating of switching output DC [mA]	200; (250 (...50 °C))
Short-time current rating of switching output [mA]	2200; (20 ms / 0,5 Hz)



## Capacitive sensor

KIE2015-FBOA/NI/LS100AK

Switching frequency AC	[Hz]	25
Switching frequency DC	[Hz]	50
Short-circuit proof		no
Overload protection		no
<b>Monitoring range</b>		
Sensing range	[mm]	3...15
Sensing range adjustable		yes
Factory setting sensing range	[mm]	15
Real sensing range Sr	[mm]	15 ± 10 %
Operating distance	[mm]	0...12.1
<b>Accuracy / deviations</b>		
Correction factor		glass: 0.4 / water: 1 / ceramics: 0.2 / PVC: 0.2
Hysteresis	[% of Sr]	1...15
Switch-point drift	[% of Sr]	-15...15
<b>Operating conditions</b>		
Ambient temperature	[°C]	-25...70
Protection		IP 65
Increased immunity		yes; (Increased immunity to conducted radio frequency interference)
<b>Tests / approvals</b>		
EMC		EN 60947-5-2
MTTF	[years]	294
<b>Mechanical data</b>		
Weight	[g]	179
Housing		Threaded type
Mounting		non-flush mountable
Dimensions	[mm]	M30 x 1.5
Thread designation		M30 x 1.5
Material		PBT; brass nickel-plated
<b>Displays / operating elements</b>		
Display	Switching status	1 x LED, red
<b>Electrical connection</b>		
Required protection		miniature fuse to IEC60127-2 sheet 1; ≤ 2 A; fast acting
<b>Accessories</b>		
Items supplied		lock nuts: 2
<b>Remarks</b>		
Remarks		Recommendation: check the unit for reliable function after a short circuit.
Pack quantity		1 pcs.

# KI3513

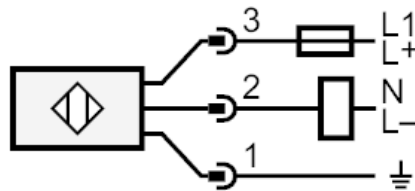


## Capacitive sensor

KIE2015-FBOA/NI/LS100AK

### Electrical connection - plug

Connector: 1 x 1/2"; coding: C



Note miniature fuse to IEC60127-2 sheet 1  $\leq 2$  A fast acting