

KG5042



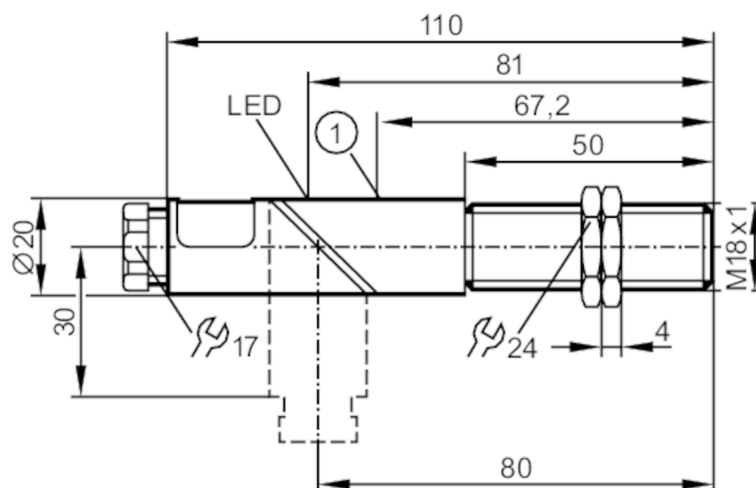
Capacitive sensor

KGE3008-APKG/NI

Article no longer available - archive entry

Alternative articles: KG5040

When selecting an alternative article and accessories please note that technical data may differ!



1 potentiometer



Product characteristics

Electrical design	PNP
Output function	normally closed
Sensing range [mm]	8
Housing	Threaded type
Dimensions [mm]	M18 x 1 / L = 110

Electrical data

Operating voltage [V]	10...36 DC
Current consumption [mA]	< 10 (24 V) / < 15 (36 V)
Protection class	II
Reverse polarity protection	yes
Measuring principle	capacitive

Outputs

Electrical design	PNP
Output function	normally closed
Max. voltage drop switching output DC [V]	2.5
Permanent current rating of switching output DC [mA]	250
Switching frequency DC [Hz]	50
Short-circuit proof	yes
Overload protection	yes

Monitoring range

Sensing range [mm]	8
--------------------	---

KG5042



Capacitive sensor

KGE3008-APKG/NI

Real sensing range Sr	[mm]	8 ± 10 %
Operating distance	[mm]	0...6.5

Accuracy / deviations		
Correction factor		glass: 0.4 / water: 1 / ceramics: 0.2 / PVC: 0.2
Hysteresis	[% of Sr]	1...15
Switch-point drift	[% of Sr]	-15...15

Operating conditions		
Ambient temperature	[°C]	-25...80
Protection		IP 65

Tests / approvals		
EMC	EN 60947-5-2	

Mechanical data		
Weight	[g]	72
Housing		Threaded type
Mounting		non-flush mountable
Dimensions	[mm]	M18 x 1 / L = 110
Thread designation		M18 x 1
Material		PBT

Displays / operating elements		
Display	Switching status	1 x LED, yellow

Accessories		
Items supplied		lock nuts: 2 screwdriver: 1

Remarks		
Pack quantity		1 pcs.

Electrical connection		
terminals: ...2.5 mm ² ; Cable sheath: Ø 4.5...10 mm; Cable gland: M16 X 1.5		

Connection		
------------	--	--

