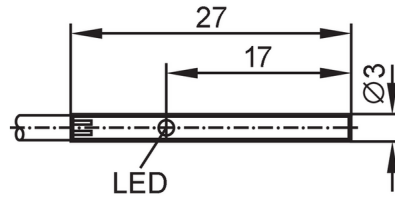


IZ5048



Inductive sensor

IZ93001-BPKG/2M PVC



Product characteristics

Electrical design		PNP
Output function		normally open
Sensing range	[mm]	1
Housing		tubular
Dimensions	[mm]	Ø 3 / L = 27

Electrical data

Operating voltage	[V]	10...30 DC
Current consumption	[mA]	12; (24 V)
Reverse polarity protection		yes

Outputs

Electrical design		PNP
Output function		normally open
Max. voltage drop switching output DC	[V]	1.5
Permanent current rating of switching output DC	[mA]	100
Switching frequency DC	[Hz]	5000
Short-circuit protection		yes
Type of short-circuit protection		yes (non-latching)
Overload protection		no

Monitoring range

Sensing range	[mm]	1
Real sensing range Sr	[mm]	1 ± 10 %
Operating distance	[mm]	0...0.8

Accuracy / deviations

Correction factor		steel: 1 / stainless steel: 0.7 / brass: 0.5 / aluminum: 0.4 / copper: 0.3
Hysteresis	[% of Sr]	< 15
Switch-point drift	[% of Sr]	-10...10

Operating conditions

Ambient temperature	[°C]	0...70
Protection		IP 67

Tests / approvals

EMC	EN 60947-5-2	
	EN 55011	class B

IZ5048



Inductive sensor

IZ93001-BPKG/2M PVC

MTTF	[years]	735
UL approval	Ta	0...40 °C
	voltage supply	Class 2
	File number UL	E174191

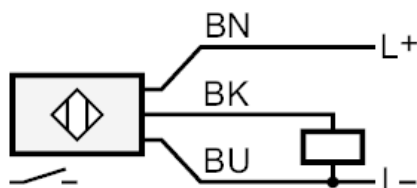
Mechanical data		
Weight	[g]	51
Housing		tubular
Mounting		non-flush mountable
Dimensions	[mm]	Ø 3 / L = 27
Material		housing: stainless steel; sensing face: POM

Displays / operating elements		
Display	Switching status	1 x LED, red

Accessories	
Items supplied	Mounting clamp., E20107

Remarks	
Pack quantity	1 pcs.

Electrical connection	
Cable: 2 m, PVC; 3 x 0.14 mm ²	
Connection	



Core colors :
BK = black
BN = brown
BU = blue

IZ5048

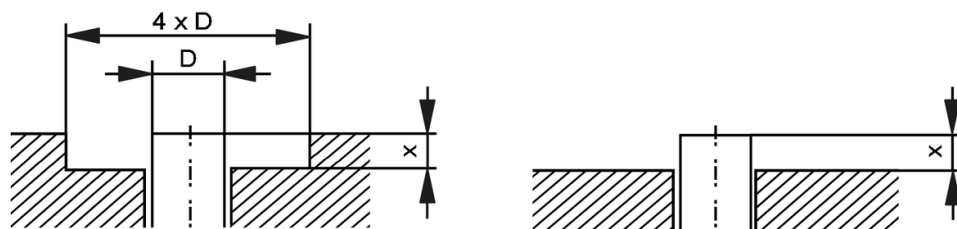


Inductive sensor

IZ93001-BPKG/2M PVC

Diagrams and graphs

Installation



If S_r varies by $< 10\%$ the following free space must be maintained ferromagnetic materials $X > 1.5\text{ mm}$ other metals $X > 3.0\text{ mm}$