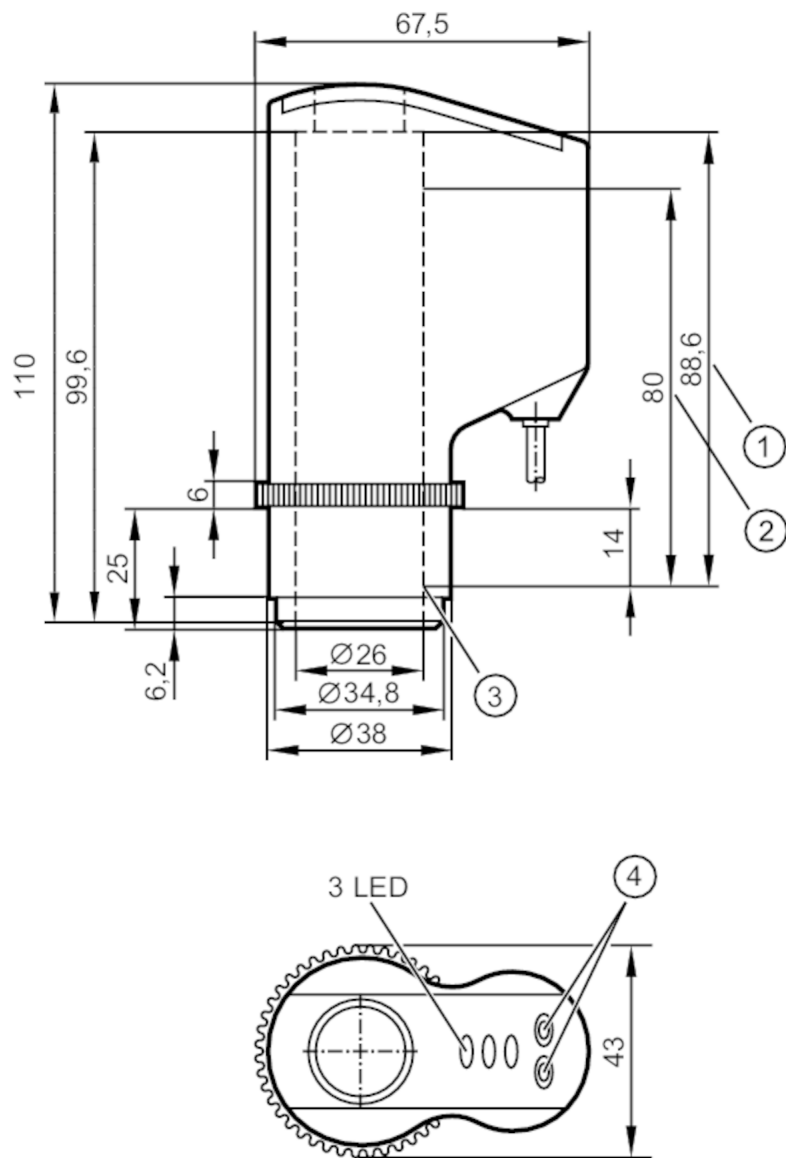


IX5006



Position sensor for rising stem valves

IX-3080-BPKG/3LED



- 1 Max. spindle stroke
- 2 Measuring distance
- 3 initial value of the measuring range Zero point
- 4 Programming buttons



Product characteristics		
Electrical design		PNP
Output function		3 x normally open
Dimensions	[mm]	67.5 x 43 x 110
Application		
Application		Position feedback for seat valves and diaphragm valves; Absolute distance measurement; Monitoring of the valve seal
Electrical data		
Operating voltage	[V]	18...36 DC
Current consumption	[mA]	42; (24 V)



Position sensor for rising stem valves

IX-3080-BPKG/3LED

Protection class	III	
Reverse polarity protection	yes	
Max. power-on delay time [ms]	2000	
Outputs		
Electrical design	PNP	
Output function	3 x normally open	
Max. voltage drop switching output DC [V]	2.5	
Permanent current rating of switching output DC [mA]	100	
Short-circuit protection	yes	
Type of short-circuit protection	yes (non-latching)	
Overload protection	yes	
Monitoring range		
Measuring range [mm]	0...80	
Max. target speed [m/s]	1	
Resolution of valve stroke [mm]	0.2	
Target		cylindrical disc
	-	Ø 24 mm ±0,05 mm
	-	minimum height 10 mm
	-	flat surface
	-	stainless steel to DIN17440, material number 316S12.
Software / programming		
Parameter setting options	3 switchpoints to be freely defined within the measuring range	
Operating conditions		
Ambient temperature [°C]	-25...85	
Note on ambient temperature	firmly laid cable	
Protection	IP 65; IP 67; (only in conjunction with an installation in the valve head that provides sufficient protection against mechanical damage of the sensor)	
Tests / approvals		
EMC	EN 61000-4-2 ESD	4 kV CD / 8 kV AD
	EN 61000-4-3 HF radiated	10 V/m
	EN 61000-4-4 Burst	2 kV coupling clamp
	EN 61000-4-6 HF conducted	3 V
MTTF [years]	298	
Mechanical data		
Weight [g]	216.5	
Dimensions [mm]	67.5 x 43 x 110	
Material	PA; TPE; PP; LCP	
Displays / operating elements		
Display	Switching status	1 x LED, green open
	Switching status	1 x LED, yellow seat
	Switching status	1 x LED, red close

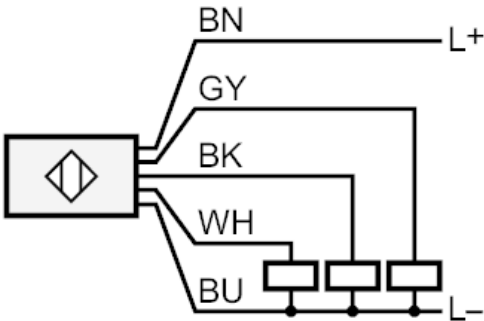
IX5006



Position sensor for rising stem valves

IX-3080-BPKG/3LED

Accessories	
Items supplied	mounting clamps: 1
Remarks	
Pack quantity	1 pcs.
Electrical connection	
Cable: 2 m, PVC; 5 x 0.14 mm²	
Connection	



black	OUT 1 seat
white	OUT 2 close
grey	OUT 3 open
Core colors :	
BK =	black
BN =	brown
BU =	blue
GY =	grey
WH =	white