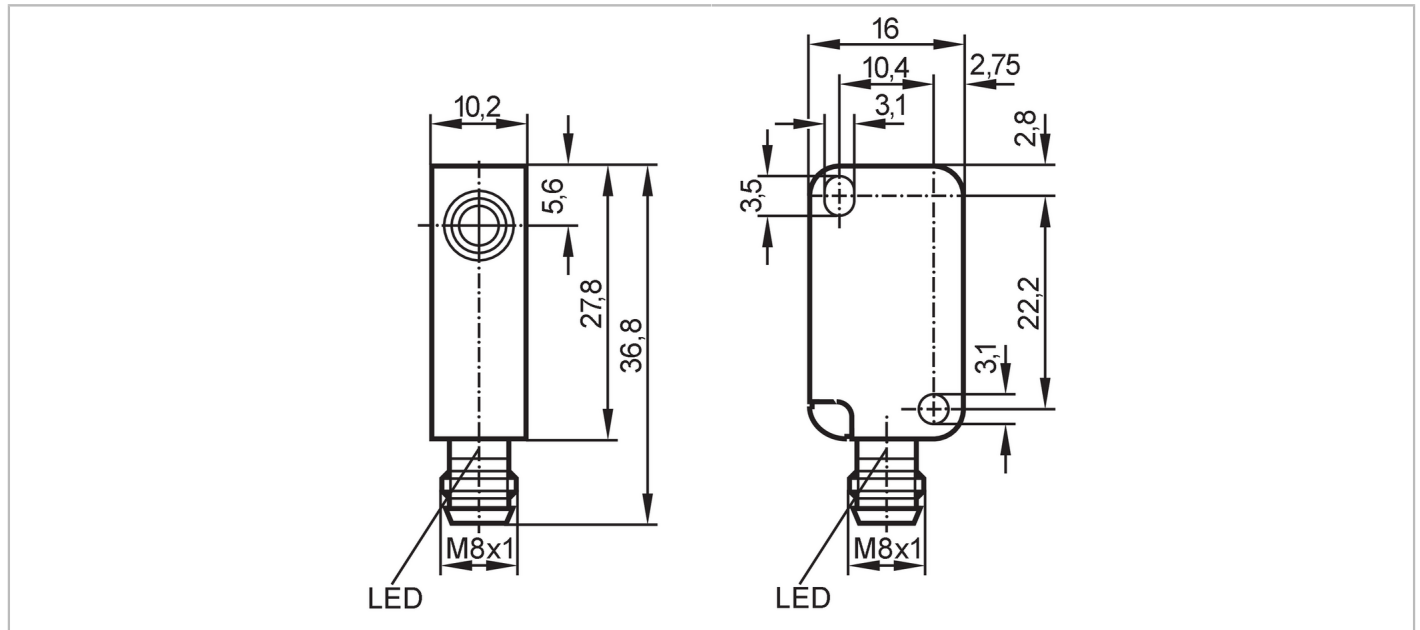


IS5071



Inductive sensor

IS-3004-BPKG/AS



Product characteristics	
Electrical design	PNP
Output function	normally open
Sensing range [mm]	4
Housing	rectangular
Dimensions [mm]	36.8 x 10.2 x 16
Electrical data	
Operating voltage [V]	10...30 DC
Current consumption [mA]	15
Protection class	III
Reverse polarity protection	yes
Outputs	
Electrical design	PNP
Output function	normally open
Max. voltage drop switching output DC [V]	2.5
Permanent current rating of switching output DC [mA]	200
Switching frequency DC [Hz]	2000
Short-circuit protection	yes
Overload protection	yes
Monitoring range	
Sensing range [mm]	4
Real sensing range Sr [mm]	4 ± 10 %
Operating distance [mm]	0...3.25

IS5071



Inductive sensor

IS-3004-BPKG/AS

Accuracy / deviations

Hysteresis	[% of Sr]	1...15
------------	-----------	--------

Operating conditions

Ambient temperature	[°C]	-25...70
Protection		IP 65; (with ifm socket duly screwed on: IP 67)

Tests / approvals

EMC		EN 60947-5-2
MTTF	[years]	3076
UL approval	Ta	-25...70 °C
	Enclosure type	Type 1
	voltage supply	Class 2
	File number UL	E174191

Mechanical data

Weight	[g]	11.3
Housing		rectangular
Mounting		non-flush mountable
Dimensions	[mm]	36.8 x 10.2 x 16
Material		PBT; PC
Tightening torque	[Nm]	< 0.5; (with washer)

Displays / operating elements

Display	Switching status	4 x 90° LED, yellow
---------	------------------	---------------------

Remarks

Pack quantity		1 pcs.
---------------	--	--------

Electrical connection - plug

Connector: 1 x M8; coding: A



Connection

