

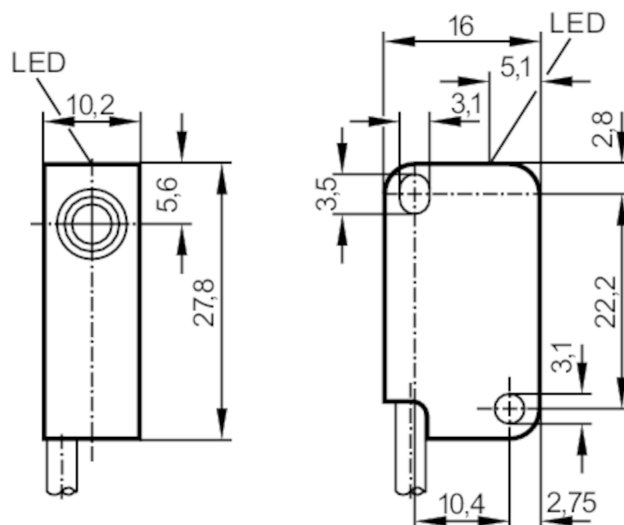
# IS5012



## Inductive sensor

IS-3002-BNOG/10m

Article no longer available - archive entry



### Product characteristics

Electrical design		NPN
Output function		normally closed
Sensing range	[mm]	2
Housing		rectangular
Dimensions	[mm]	28 x 10 x 16

### Electrical data

Operating voltage	[V]	10...36 DC
Current consumption	[mA]	15; (24 V)
Protection class		III
Reverse polarity protection		no

### Outputs

Electrical design		NPN
Output function		normally closed
Max. voltage drop switching output DC	[V]	1
Permanent current rating of switching output DC	[mA]	200
Switching frequency DC	[Hz]	800
Short-circuit protection		no
Overload protection		no

### Monitoring range

Sensing range	[mm]	2
Real sensing range Sr	[mm]	$2 \pm 10 \%$
Operating distance	[mm]	0...1.6

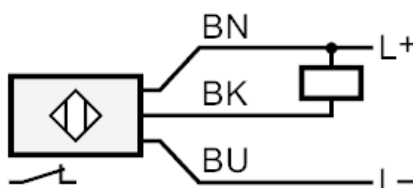
# IS5012



## Inductive sensor

IS-3002-BNOG/10m

Accuracy / deviations		
Correction factor	steel: 1 / stainless steel: 0.7 / brass: 0.4 / aluminum: 0.3 / copper: 0.2	
Hysteresis	[% of Sr]	1...15
Switch-point drift	[% of Sr]	-10...10
Operating conditions		
Ambient temperature	[°C]	-20...80
Protection		IP 67
Tests / approvals		
EMC	EN 60947-5-2	
MTTF	[years]	2791
Mechanical data		
Housing		rectangular
Mounting		flush mountable
Dimensions	[mm]	28 x 10 x 16
Material		PBT
Tightening torque	[Nm]	< 0.5; (with washer)
Displays / operating elements		
Display	Switching status	1 x LED, yellow
Remarks		
Pack quantity		1 pcs.
Electrical connection		
Cable: 10 m, PVC; 3 x 0.14 mm²		
Connection		



Core colors :  
BN = brown  
BU = blue  
BK = black