

IN5317



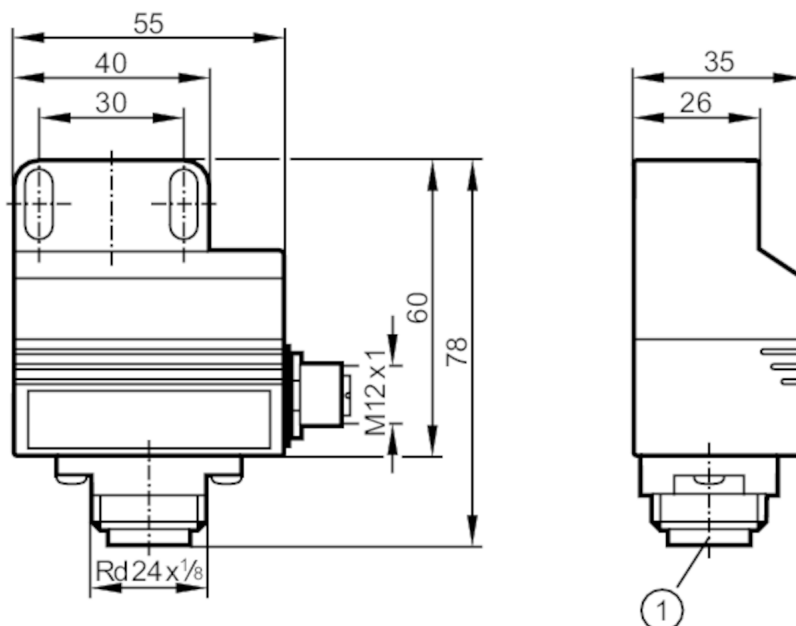
Dual inductive sensor for valve actuators

IND3004DBPKG/T2

Article no longer available - archive entry

Alternative articles: IN5334

When selecting an alternative article and accessories please note that technical data may differ!



1 field connection



Product characteristics

Electrical design	PNP
Sensing range [mm]	4
Housing	rectangular
Dimensions [mm]	40 x 26 x 60

Application

Application	For mechanical interfaces to ISO 5211 (VDI/VDE)
-------------	---

Electrical data

Operating voltage [V]	10...36 DC
Current consumption [mA]	20; (24 V)
Reverse polarity protection	no

Outputs

Electrical design	PNP
Max. voltage drop switching output DC [V]	2.5
Permanent current rating of switching output DC [mA]	250
Switching frequency DC [Hz]	1300
Short-circuit protection	no
Overload protection	no

IN5317



Dual inductive sensor for valve actuators

IND3004DBPKG/T2

Monitoring range		
Sensing range	[mm]	4
Operating conditions		
Ambient temperature	[°C]	-25...80
Protection		IP 67
Mechanical data		
Housing		rectangular
Mounting		non-flush mountable
Dimensions	[mm]	40 x 26 x 60
Material		PBT; PC
Displays / operating elements		
Display	Switching status	2 x LED, yellow
Remarks		
Pack quantity		1 pcs.
Electrical connection		
Connector: 1 x Rd24		
Connector: 1 x M12		