

# IM5098



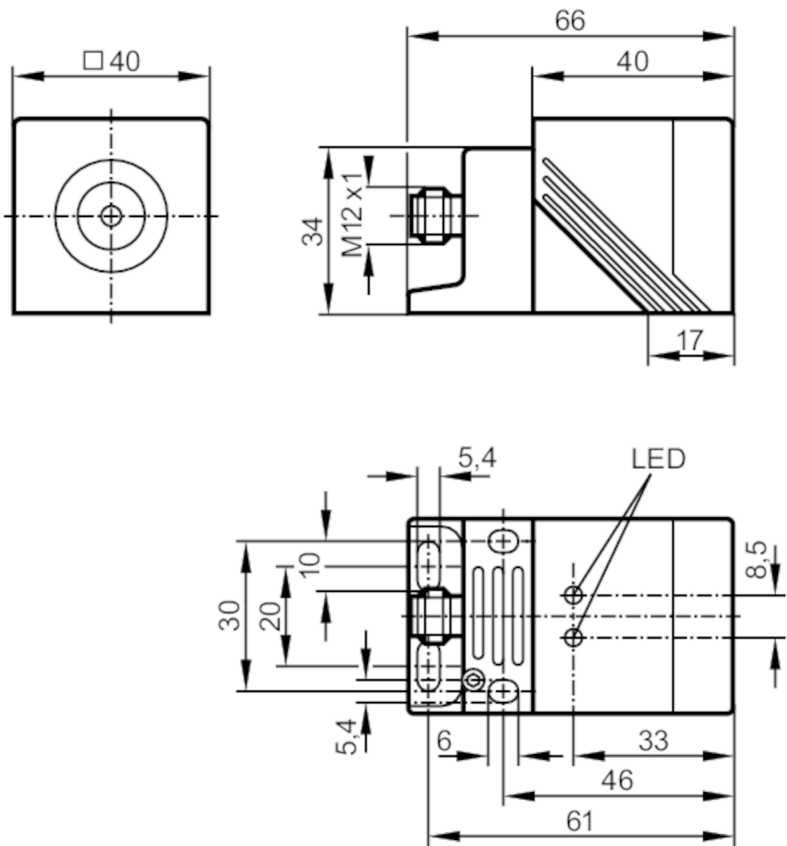
## Inductive sensor

IMC4035UCPKG/K1/SC/US-100-DPA

Article to be discontinued

Alternative articles: IM5124 or IM5126

When selecting an alternative article and accessories please note that technical data may differ!



### Product characteristics

Electrical design	PNP
Output function	complementary
Sensing range [mm]	35
Housing	rectangular
Dimensions [mm]	40 x 40 x 66

### Application

System	gold-plated contacts; correction factor = 1; Magnetic-field immune; weld coated
Magnetic-field immune	yes

### Electrical data

Operating voltage [V]	10...36 DC
Current consumption [mA]	20; (24 V)
Protection class	II
Reverse polarity protection	yes



## Inductive sensor

IMC4035UCPKG/K1/SC/US-100-DPA

Outputs		
Electrical design	PNP	
Output function	complementary	
Max. voltage drop switching output DC [V]	2.5	
Permanent current rating of switching output DC [mA]	250	
Switching frequency DC [Hz]	250	
Short-circuit protection	yes	
Type of short-circuit protection	yes (non-latching)	
Overload protection	yes	
Monitoring range		
Sensing range [mm]	35	
Real sensing range Sr [mm]	35 ± 10 %	
Operating distance [mm]	0...28.3	
Accuracy / deviations		
Correction factor	steel: 1 / stainless steel: 1 / brass: 1 / aluminum: 1 / copper: 1	
Hysteresis [% of Sr]	1...15	
Switch-point drift [% of Sr]	-10...10	
Correction factor = 1	yes	
Operating conditions		
Ambient temperature [°C]	-25...70	
Protection	IP 67	
Tests / approvals		
EMC	EN 60947-5-2	
MTTF [years]	943	
UL approval	Ta	0...40 °C
	Enclosure type	Type 1
	voltage supply	Hazardous voltage
	File number UL	E174191
Mechanical data		
Weight [g]	142	
Housing	rectangular	
Mounting	non-flush mountable	
Dimensions [mm]	40 x 40 x 66	
Material	housing: PPE; sensing face: PPE black weld coated; end cap: PPS; clamp: PPS black; screw: steel galvanized	
Displays / operating elements		
Display	Switching status	1 x LED, yellow
	Power	1 x LED, green
Accessories		
Items supplied	Mounting bracket: 1	
	Allen key: 1	

IM5098



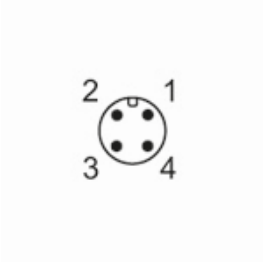
Inductive sensor

IMC4035UCPKG/K1/SC/US-100-DPA

Remarks	
Remarks	5 positions of the active zone possible
Pack quantity	1 pcs.

Electrical connection - plug

Connector: 1 x M12; coding: A; Locking: brass, white bronze coated; Contacts: gold-plated



Connection

