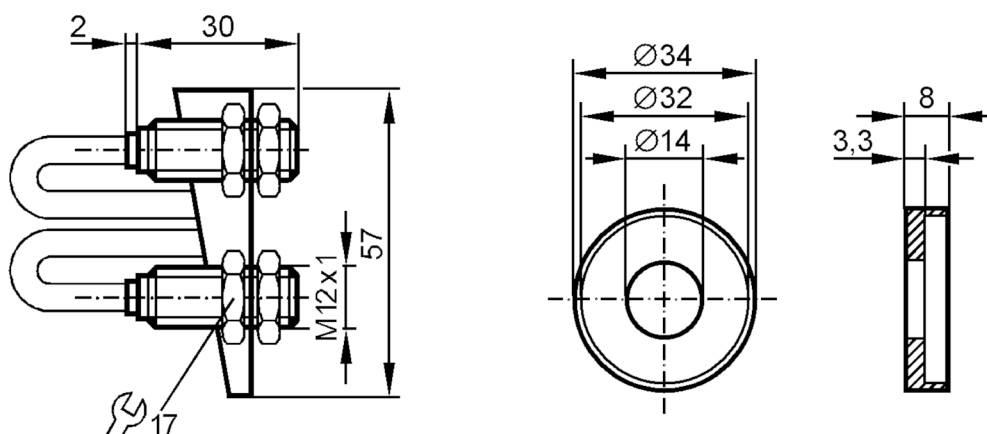




Inductive sensor

IF-04-N US-D-S

Article no longer available - archive entry



Product characteristics

Output function		normally closed
Sensing range	[mm]	4
Housing		Threaded type
Dimensions	[mm]	M12 x 1

Application

System		gold-plated contacts
Application		Not for use in hazardous areas (not ATEX approved!)
Installation		for valves; (38...63,5 (NW 40...65))

Electrical data

Connection at circuit amplifier		yes
Switching amplifiers		connection to switching amplifier according to EN 60947-5-6
Nominal voltage DC	[V]	8.2; (1kΩ)
Supply voltage DC	[V]	7.5...30
Current consumption	[mA]	undamped: > 2,1; damped: < 1; per Sensor
Protection class		II

Outputs

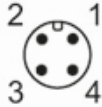
Output function		normally closed
Permanent current rating of switching output DC	[mA]	30; (per Sensor)
Switching frequency DC	[Hz]	1500

IF7037



Inductive sensor

IF-04-N US-D-S

Monitoring range		
Sensing range	[mm]	4
Operating conditions		
Ambient temperature	[°C]	-20...70
Protection		IP 67
Tests / approvals		
EMC	EN 60947-5-2	
	EN 55011	class B
Mechanical data		
Weight	[g]	0.001
Housing		Threaded type
Mounting		non-flush mountable
Dimensions	[mm]	M12 x 1
Thread designation		M12 x 1
Material		PBT; Target: stainless steel (1.4301 / 304)
Accessories		
Items supplied		lock nuts: 2
		Target
Remarks		
Remarks		Note:
		The sensors are adjusted with the enclosed target flag.
		If an older type of target flag is used, there is a risk of mechanical damage to the sensor if they are not adjusted properly.
Pack quantity		1 pcs.
Electrical connection - plug		
Connector: 1 x M12; coding: A; Contacts: gold-plated		
		

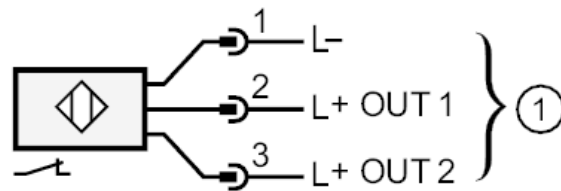
IF7037



Inductive sensor

IF-04-N US-D-S

Connection



1	Connection at circuit amplifier
1-2	High, out1
1-3	Low, out 2